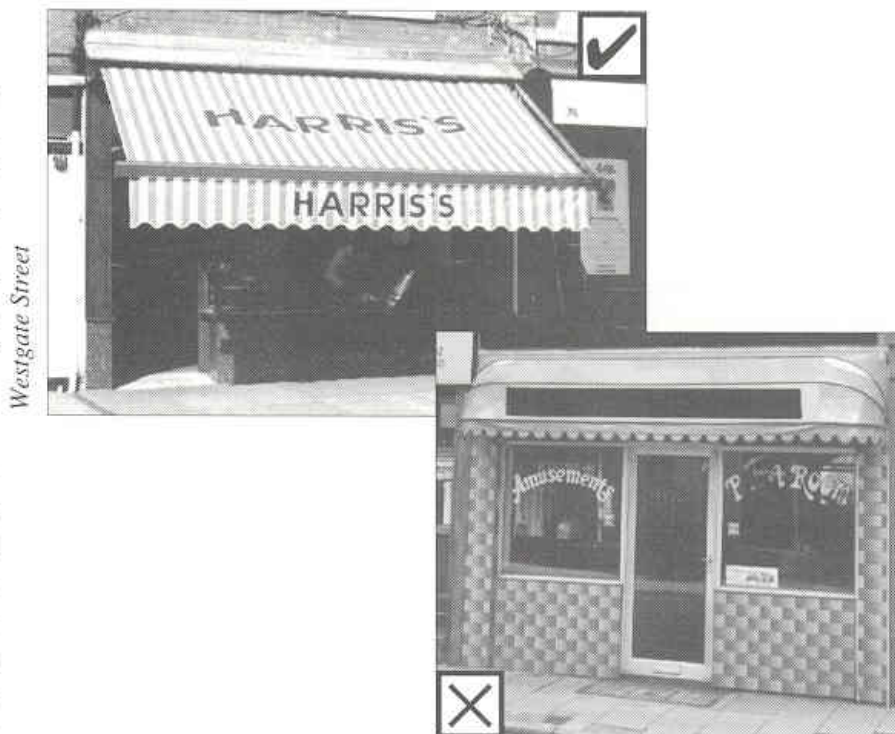


Blinds and Canopies

Some of the older shopfronts still possess their traditional pull-out blinds and these should be retained in preference to more modern types, as these are attractive and functional, and more appropriate in historic or traditional situations.

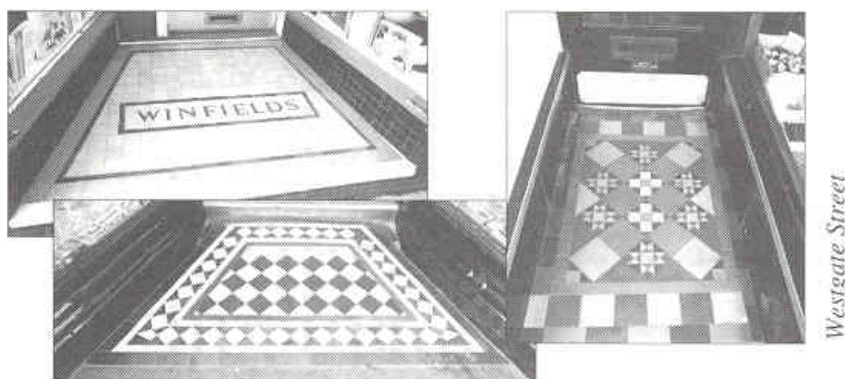
Modern plastic balloon-type canopies are not appropriate on traditional properties, and are never acceptable in conservation areas. If they are chosen for use on modern properties elsewhere, they should not be used as additional means of advertising.



▲ *Traditional blinds are more appropriate than* ▲
balloon type canopies on older or historic properties

Recessed Entrances

A recessed entrance can give relief and interest to a shopfront. These are commonplace on many of the traditional shopfronts, and should be retained. Original floor tiling, often mosaic, also still exists in some cases and this should also be retained.



▲ *Tiled recessed entrances should be retained* ▲