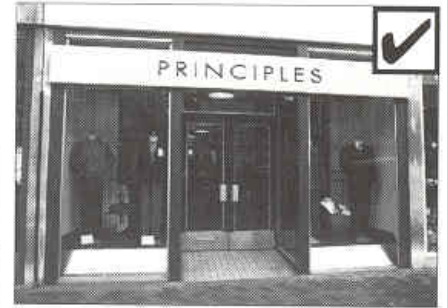


Shopfront Designs for Modern Buildings

Traditional or reproduction designs are usually inappropriate for modern properties, as they generally ignore the character of the building within which they sit.

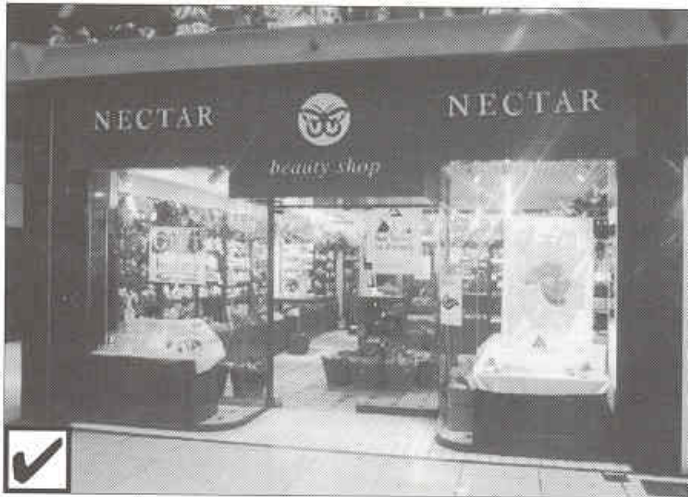
Modern buildings can, however, present a good opportunity to add examples of the architecture and styles of our own period into the townscape.



Eastgate Street

◀◀ Good modern designs, where appropriate, will introduce variety and interest into the townscape

The proportions of the design and correct use of materials are as important as with the design of a traditional shopfront, but there is scope for innovation and creativity which could be a valuable contribution to the variety and interest of the City.



Kings Walk

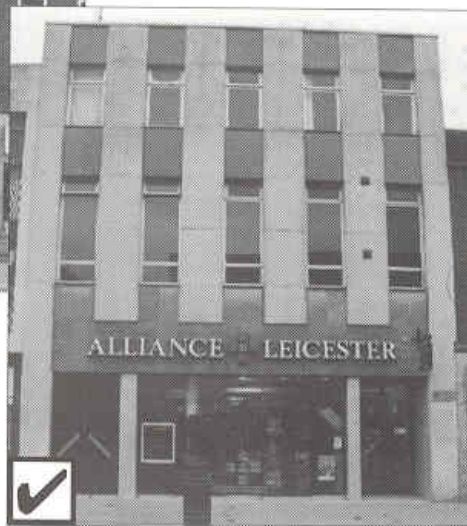
A modern shopfront must still incorporate the essential requirement for any shopfront, which is one of quality: quality in design, materials and

workmanship. This is particularly important where the property is situated within a conservation area.



Eastgate Street

(Before)



(After)

▲▲ Replacement of an unbalanced shopfront with a modern design to suit the architecture of the whole building



Nottingham

▲ A combination of innovative design and a correct use of modern materials