

APPROPRIATE MATERIALS FOR NEW SHOPFRONTS

Traditional or Historic Buildings

Only traditional and natural materials should be used in the construction of shopfronts for traditional or historic

buildings. Such materials could include timber, stone, marble, slate, brass, cast iron, but must be appropriate for the

age, style and location of the property and show careful consideration to historical accuracy and local tradition.

Modern Buildings

Materials for modern shopfronts should also be of good quality. Timber, stone, brass and marble are appropriate, but modern materials, such as stainless steel, polished aluminium or chrome may also be acceptable

and attractive alternatives.

Where timber is used, this should not be of an endangered species or from a non-sustainable resource. Planning Officers will be able to advise you further in this respect.

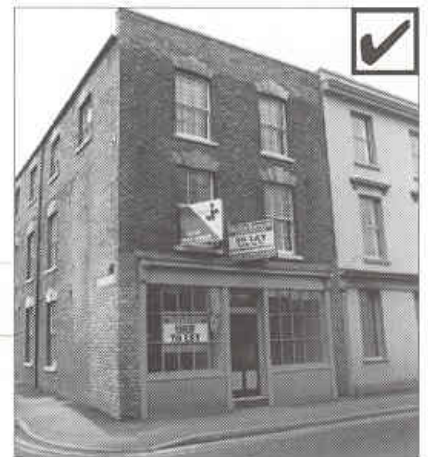
Staining of shopfronts should be avoided as it rarely achieves a quality finish. It will generally not be appropriate or acceptable in conservation areas or on listed buildings.

RETENTION/REFURBISHMENT OF ORIGINAL VICTORIAN AND EDWARDIAN SHOPFRONTS

Many attractive Victorian and Edwardian shopfronts still exist in various parts of the

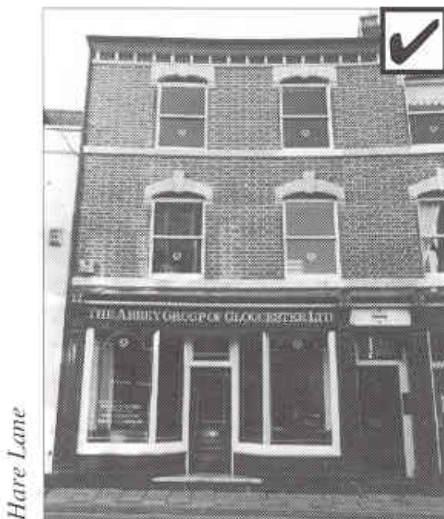
City, and in particular in many of the neighbourhood shopping areas, such as Barton Street, Tredworth High Street, the Bristol Road and Linden area. These should be retained and repaired wherever possible, as they are an important part of the history, architecture and character of their area.

Unfortunately, some have been allowed to become dull and shabby, or to fall into a state of disrepair. In many cases, these only require minor repair and redecoration to revitalise them, and could thereby generate a



▲ *Sympathetic refurbishment retains the character of the building and the area*

significant improvement to an area.



▲ *Regular maintenance will benefit original shopfronts*