

SUB54 Land at Rea Lane

Site Historic Environment Assessments for Strategic  
Assessment of Land Availability (SALA)

March 2015

# Contents

- 1. Background ..... 2
  - 1.1 Location.....2
  - 1.2 Site Visits.....2
  - 1.3 Topography , Geology and Land Use.....2
  - 1.4 Site Constraints.....2
- 2. Assessment ..... 3
  - 2.1 Archaeology, Built Heritage and Settings.....3
    - 2.1.1 Previous Assessments .....3
    - 2.1.2 Prehistoric, Roman and Saxon .....3
    - 2.1.3 Medieval.....3
    - 2.1.4 Post-medieval .....4
    - 2.1.5 Modern or Undated.....4
    - 2.1.6 Settings and Key Views .....5
  - 2.2 History and Map Regression Analysis .....5
  - 2.3 Potential for Further Assets.....7
- 3. Significance ..... 7
  - 3.1 Intrinsic interest of the sites .....7
  - 3.2 Relative importance of the sites.....7
  - 3.3 Physical extent of important elements .....7
- 4. Impact of Development of Site ..... 7
  - 4.1 Assessment Criteria.....7
  - 4.2 Assessment of Harm.....7
    - 4.2.1 Archaeology.....8
    - 4.2.2 Built Heritage .....8
    - 4.2.3 Settings.....8
  - 4.3 Improvements and Enhancements.....9
- 5. Planning Requirements ..... 9
- 6. Minimising Harm ..... 9
- 7. Recommendations ..... 9
- 8. Conclusion ..... 10
- 9. Bibliography ..... 10
- 10. Appendix I: Table of designated and undesignated assets ..... 12
- 11. Plates ..... 15
- 12. Figures..... 16

# Site Historic Environment Assessment for Strategic Assessment of Land Availability (SALA)

Shona Robson-Glyde

## SUB54 Land at Rea Lane

### 1. Background

#### 1.1 Location

This site historic environment assessment consists of SUB54 Land at Rea Lane located within the parish of Hempsted, in the Ward of Westgate within the wider boundary of Gloucester City (Fig 1). It consists of open fields on the south west edge of Hempsted. To the north of the site are the houses of Chartwell Close with the houses of High View to the east. There are open fields to the south and west.

#### 1.2 Site Visits

Site visits were undertaken on 7<sup>th</sup> March 2016. At this time photographs were taken and have been reproduced in this document as Plate 1. Archaeological information, historic maps and plans have also been reproduced as Figures 2-4.

#### 1.3 Topography , Geology and Land Use

The site encompasses an area of 1.47 hectares (Fig 1), is centred on NGR SO 8132 1682 and is located on a gentle slope running north east to south west. It lies at a height of between 23.3m and 15.2m AOD.

The underlying bedrock is 'Blue Lias Formation And Charmouth Mudstone Formation (Undifferentiated)' (BGS 2015) This is a sedimentary bedrock formed approximately 183 to 204 million years ago in the Jurassic and Triassic Periods. These rocks were formed in warm shallow seas with carbonate deposited on platform, shelf and slope areas. This bedrock is overlain by superficial deposits of 'Kidderminster Station Member' sands and gravels (ibid). The soils overlying the area are a 'Luvisol' type with clay-enriched subsoil (UKSO 2015).

The last use of the site was as agricultural land used for pasture.

#### 1.4 Site Constraints

A table detailing all the designated and undesignated assets within and in the area of the site is included in Appendix I.

There are no scheduled monuments or listed buildings contained within the SUB54 site. The closest scheduled monuments and listed buildings are to the north within Hempsted village. It is not part of a registered park or garden or a battlefield. The site lies to the south of the Hempsted Conservation Area and is included within the River Severn/Hempsted Village Fringe Landscape Conservation Area. The site also lies adjacent to the Cordon Sanitaire.

There have been no planning applications received for the area of the SUB54 site and there are no open applications within the area.

## 2. Assessment

### 2.1 Archaeology, Built Heritage and Settings

A search of the Gloucester City Council Historic Environment Record (HER; GUAD numbers) for the site and its surrounding area revealed a number of records relating to the buried archaeology of the SUB54 area. This was enhanced by a search of records included in the National Heritage List for England (NHLE) and the National Monuments Record (NMR). The relevant records are shown on Figure 2 and discussed below.

#### 2.1.1 Previous Assessments

There have been a number of previous assessments in the area of the SUB54 site. A desk-based assessment was produced for Land at Rea Bank (GUAD2257) which revealed possible prehistoric or Roman seasonal wetland exploitation along with historic field boundaries, ridge and furrow and drainage ditches. Another desk-based assessment was carried out at Land at Hempsted (GUAD2222) which showed the existence of Roman archaeology in the area, also earthwork ridge and furrow and concluded that pre-medieval evidence could survive on the site. The desk-based assessment was followed by a geophysical survey (GUAD2233) for the same area which revealed a building, field boundaries and a very strong ridge and furrow result which was felt could be masking earlier remains. A desk-based assessment of the canal corridor (GUAD1723) assessed five site and concluded there was potential for prehistoric, Roman, medieval and post-medieval sites within the area. Geophysical surveys were also carried out at Netheridge Wetlands (GUAD1665) and along the route of the Western Radial Road (GUAD1694).

#### 2.1.2 Prehistoric, Roman and Saxon

##### Archaeology

There have been no prehistoric features recorded within the area of the SUB54 site however assessments within the area have shown the potential for archaeological evidence of this date to exist unrecorded within the site.

Evidence of Roman occupation has been found in the area. In St Swithun's churchyard, a Roman glass fragment (GUAD1189) and a rim sherd of 3<sup>rd</sup> to 4<sup>th</sup> century greyware (GUAD1190) were found during grave digging. During an evaluation at Land east of Hempsted Lane (GUAD2244) Roman pottery was uncovered along with undated ditches and a post-hole that could be of Roman date. At Netheridge Wetlands, an evaluation (GUAD1302) (GUAD1302) revealed a Roman ditch but also revealed that the whole site had been truncated with all topsoil removed.

There are no records of Saxon features being recorded in the area of the SUB54 site.

#### 2.1.3 Medieval

##### Archaeology

Medieval archaeology within the vicinity of the SUB54 site is not uncommon. At the evaluation of Land east of Hempsted Lane (GUAD 2244), a field boundary ditch and ridge and furrow features were recorded. At Hempsted School, a watching brief (GUAD1207) didn't uncover any features but did find 12<sup>th</sup> century pottery. In a watching brief at Hempsted Lane (GUAD1216) a medieval metal surface was recorded in a number of gas main trenches. Another watching brief, at 27 Court Gardens (GUAD1203), recovered 11<sup>th</sup> to 12<sup>th</sup> century pottery from a buried soil layer. A medieval pit was recorded during a watching brief at Waters Reach (GUAD1295). There is also a

documentary record (GUADI187) for medieval Hempsted Court existing within the area of Court Gardens.

#### Built Heritage

There are no medieval built structures within the site but there are a number in the area around the SUB54 site. The Church of St Swithun is a grade II\* listed building (NHLE1271743) dating from the 14<sup>th</sup> century with 15<sup>th</sup> century rebuilding. A documentary record (GUADI191) of the church suggests it was first built in the 11<sup>th</sup> century. Building recording at St Swithun's Church (GUAD2156) confirmed the 14<sup>th</sup> century date of the current structure and that it had been rebuilt in 1467-77. Close to the church, Church Farmhouse is a grade II listed timber-framed farmhouse dating from the mid 16<sup>th</sup> century. In the centre of Hempsted village is the scheduled and listed Hempsted Cross (NHLE1002072; NHLE1271745). This grade II\* listed structure was observed (GUAD706) to have 15<sup>th</sup> century steps and cross-shaft. The steps were in their current position when the cross-shaft was found buried in the churchyard in the 19<sup>th</sup> century.

#### 2.1.4 Post-medieval

##### Archaeology

There is a small amount of post-medieval archaeology known in the area of the SUB54 site. The evaluation of Land east of Hempsted Lane (GUAD2244) recorded, along with this Roman and medieval evidence, a pond and a post-pad of post-medieval date. At Hempsted School, the watching brief (GUADI207) recovered 19<sup>th</sup> century pottery along with the 12<sup>th</sup> century sherds. The earthworks of a post-medieval herringbone drainage system (GHER38509) were visible on 1950s aerial photographs to the south of the SUB54 site. Although they are no longer visible their buried remains may still survive. A watching brief on the construction of the new South West Bypass (GUADI704) uncovered post-medieval ditches and furrows, a back-filled brook and a spread of building rubble. A watching brief at 1 Court Gardens (GUADI222) revealed demolition rubble and a wall associated with Hempsted Court.

##### Built Heritage

There are no post-medieval medieval built structures within the site but around the SUB54 site are a number of post-medieval structures and some with post-medieval elements. St Swithun's Church (NHLE1271743), built in the 14<sup>th</sup> century, was restored and refitted in 1837-9 and restored and extended in 1885-6 (GUAD2156). Hempsted Cross (NHLE1002072 and NHLE 1271745) had a new upper section covered and placed on top of the medieval shaft in around 1850. To the south of St Swithun's Church, between the church and Hempsted House, is a grade II listed boundary wall (NHLE1271738) of late 17<sup>th</sup> century date. There is a blocked gateway in the centre of the wall and it has 18<sup>th</sup> and 19<sup>th</sup> century repairs. This wall was probably built at the same time as the grade II listed Hempsted House (NHLE1245659). The house was built in 1671 as Hempsted rectory by Sir John Scudamore. It is brick, 'of two storeys, with a long central rear wing and full-height central gabled entrance projection to the five-bay east front' (Verey and Brooks 2002, p534-5). It has 18<sup>th</sup> and 19<sup>th</sup> century additions and alterations and became a house in 1954. Within the churchyard are a number of listed chest tombs. All are grade II listed and date from the mid 17<sup>th</sup> century to the late 18<sup>th</sup> century (NHLE1271739; NHLE1271740; NHLE1271741).

Within the area around the SUB54 site there are also a number of surviving unlisted post-medieval buildings. On Rea Lane is a small building called Oak Cottage. This building is marked on historic maps and still survives although planning permission has been approved for its demolition and replacement. On Hempsted Lane a pair of houses, numbers 133 and 135, were constructed at the end of the 19<sup>th</sup> century within large gardens. The gardens have now been built upon and the houses

are completely surrounded by the later structures of Bridge Close. Fairmead House, 123 Hempstead Lane, is also of late 19<sup>th</sup> century date. Set back from the road in its own grounds it is a typical late Victorian villa. In a prominent, central position in the village is Milocroft, 115 Hempsted Lane. It is a 'brick house with half-timbered gables by W B Wood, 1892' (Verey and Brooks 2002, p535). Much of the rest of Hempsted is 20<sup>th</sup> century in date, replacing the earlier houses and farms of this pastoral village.

### 2.1.5 Modern or Undated

#### Archaeology

Very little modern archaeology has been recorded with the area of the SUB54 site. A watching brief on the South West Bypass (GUAD1875) revealed World War II petrol storage tanks and associated shelters. A number of archaeological investigations in the area revealed only worked soils and natural geology. This included 158 Hempsted Close (GUAD1296); Church Farm (GUAD1310); 3 Prospect Terrace (GUAD1592); an evaluation at Land east of Hempsted (GUAD1645); Hempsted School (GUAD2101 and GUAD2116) and the South West Bypass (GUAD1280). At The Grove (GUAD1277) the undated earthworks of a ditch and bank forming a field boundary were observed. These could date from the medieval period through to the early modern period.

#### Built Heritage

Obviously the expansion of Hempsted in the early to mid 20<sup>th</sup> century has given us many buildings of modern date, however very few of these are worthy of mention. In St Swithun's churchyard is the grade II listed early 20<sup>th</sup> century war memorial (NHLE1419396) of a dressed-stone wheel-head cross which shows the influence of Celtic crosses in its design.

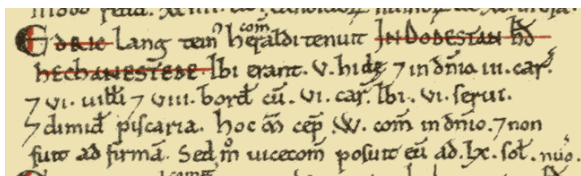
### 2.1.6 Settings and Key Views

'The NPPF makes it clear that the setting of a heritage asset is the surroundings in which a heritage asset is experienced. Its extent is not fixed and may change as the asset and its surroundings evolve' (HE 2015d, p2). Whilst setting is itself not a heritage asset, its importance lies in what it contributes to the significance of the heritage asset.

The SUB54 site lies adjacent to Rea Lane and to the modern houses of Chartwell Close. It is currently well screened from all sides by mature hedgerows, trees and bushes.

## 2.2 History and Map Regression Analysis

The site sits to the south of the core of Hempsted village. Hempsted can trace its origins to Anglo-Saxon times or earlier. The name 'Hempsted' translates as 'high or hedged homestead or place' (Baddeley 1913, p81). It is included within the Domesday Survey, in which it is called *Hechanestede*



(Moore 1982, [1],62). The settlement consisted of 20 households in five hides of land with a taxable value of five geld units, which is quite a large amount for only 20 households. Although it did not have a mill it did hold the rights to half a

fishery and was able to field three plough teams along with the three Lord's plough teams. Despite the manor being mentioned in Domesday, this does not mean that it consisted of a number of houses grouped together; it may have been a dispersed settlement that only became a village in later times.

The manor of Hempsted became part of the holdings of Llanthony Secunda Priory, located to the north of Hempsted, in 1141 when it was granted to the Priory by the Earl of Hereford (Herbert

1988, p422). The Priory held the manor until the Dissolution when it passed into private ownership. The manor stood on a moat site (now gone) at Podsmead in the south east of the ancient parish but the village was, and is, located on the south side of the hill at the centre of the parish. The area to the west of the village consisted of a tract of meadowland defended from the River Severn by a continuous earth bank which continued up Rea Lane towards the village and can still be seen today. Rea Lane, adjacent to the site, runs to the south from the village and is an ancient routeway that was formerly known as Horsepool Street (Herbert 1988, p421).

Hempsted has been predominantly pasture farming since at least the medieval period, with large areas of common meadowland existing to the west with names such as 'Oxlease' and 'Cowlease'. The meadows were inclosed by Act of Parliament in 1815 although some had already been inclosed in the late 18<sup>th</sup> century (Herbert 1988, p423). About 1775, the parish was said to 'consist of rich pasturage and orcharding, and produces excellent cheese and cyder' (Rudder 1779, p489) and in 1839 Hempsted and Rea contained only 188 acres of arable land compared with 1,106 acres of pasture and meadow (Herbert 1988, p423). In 1327, 25 inhabitants were assessed for the lay subsidy (ibid, p422) by around 1710 there were 140 inhabitants in 30 houses which had dropped to 129 in around 1775 (Rudder 1779, p491). The population rose to 251 in 51 houses by 1851 and to 424 in 88 houses by 1861 as part of Hempsted began to be affected by the growth of Gloucester (Herbert 1988, p422). The 1961 census shows that the population had risen to 508 but the highest population recorded was in the 1881 census which shows that Hempsted had a population 714. Most of these inhabitants were supported by agriculture with only two families supported by trade in 1831 (Herbert 1988, p422).

The early maps (Fig 3) of the area of the SUB54 site show little detail, however they do show the place names and it can be seen that Hempsted has altered its spelling through time. The 1583 Saxton map (Fig 3) shows that Hempsted was spelled in a simpler manner, just as 'Hemsted'. This spelling changes by the 18<sup>th</sup> century when the 'p' is added to make Hempsted on the 1794 Cary map (Fig 3) and then by the early 19<sup>th</sup> century the name is 'Hempstead' as seen on the Dawson map of 1811. It is on this map (Fig 3) that the first detail of the area is shown although little more than the lanes and field boundaries can be seen. Similar information is shown on the 1831 Ordnance Survey (Fig 3) and the hill on which Hempsted is located can be easily seen on this map.

The first of the more detailed maps is the first edition Ordnance Survey of 1884 (Fig 4). This map shows the SUB54 site as part of a larger field to the south of Church Farm and bounded on the east by Rea Lane. The 1903 Ordnance Survey (Fig 4) shows no change in the site or in Hempsted except for the construction of a lane between Hempsted Lane and Rea Lane to the east of the site. The 1934 Ordnance Survey (Fig 4) again shows no change within the site and within the village, a small number of new houses have been built. To the east, adjacent to the canal, the Standard Match Factory has been constructed.

The 1942 Land Utilisation Survey (Fig 4) shows the SUB54 site shaded in brown indicating that at this time the field was 'arable land – including fallow, rotation grass and market gardens'. The Ordnance Survey of 1955 and 1956 (Fig 4) shows the expansion of Hempsted village to the north and north east of the SUB22 site with new houses on High View in the process of being constructed and a lot more houses along the eastern end of Hempsted Lane. Up to date mapping shows that the expansion of Hempsted continued in the rest of the 20<sup>th</sup> century, including the construction of the South Western Bypass.

## 2.3 Potential for Further Assets

Previous assessments within the area of the SUB54 site have shown the potential for prehistoric remains to exist within the area and therefore also on this site. The location of the site on a hill and close to a waterway would be ideal for prehistoric settlement. Roman evidence has already been located close to the site and therefore there is potential for archaeological evidence of Roman date to be found on the site. Medieval evidence is likely to consist of field boundary features only as the medieval settlement of Hempsted was concentrated to the north of the site and the fields around the settlement were mainly used as meadowland.

## 3. Significance

### 3.1 Intrinsic interest of the sites

The area of the SUB54 site holds interest for the potential archaeological features of prehistoric or Roman date that may exist upon the site.

### 3.2 Relative importance of the sites

There are no designated heritage assets within the SUB54 site and it therefore holds little national importance. Although there are a number of designated assets within the area of the site, none of them are associated with the site itself. The whole of the site lies within the River Severn/Hempsted Village Fringe Landscape Conservation Area and therefore it holds importance in relation to the setting of this LCA.

### 3.3 Physical extent of important elements

The physical extent of important features on the site cannot be identified because any archaeological features that could exist on the site have yet to be investigated.

## 4. Impact of Development of Site

### 4.1 Assessment Criteria

The NPPF (DCLG 2012) policy on harm to heritage assets is set out in paragraphs 132 to 134. This is further discussed in the NPPG (NPPG 2014) in paragraph: 017 (Reference ID: 18a-017-20140306) and paragraph: 018 (Reference ID: 18a-018-20140306) of the section on 'Conserving and Enhancing the Historic Environment'. The impact assessment table below has been produced with reference to these policies and guidance.

The site historic environment assessments will consider the impact of development for the allocation sites and will use the criteria cited in the following table.

<b>Major Enhancement</b>	Demonstrable improvement to a designated heritage asset of the highest order (or its setting), or non-designated asset (or its setting) of interest of demonstrable significance equal to that of a scheduled monument. Designated assets will include scheduled monuments, grade I/II* listed buildings, grade I/II* registered parks and gardens, registered battlefields, protected wrecks or World Heritage Sites. Improvement may be in the asset's management, its amenity value, setting, or documentation (for instance enhancing its research value). It may also be in better revealing a World Heritage Site or Conservation Area
<b>Enhancement</b>	Demonstrable improvement to a designated heritage asset (or its setting), or non-designated asset (or its setting) of interest such that the level of improvement will demonstrably have a minor affect on the area and its heritage resource, either at a local or regional level. For instance grade II listed buildings, Conservation Areas and undesignated



	heritage assets important at a sub-national level. Improvement may be in the asset's management, its amenity value, setting, or documentation (for instance enhancing its research value).
<b>Neutral</b>	Impacts that have no long-term effect on any heritage asset.
<b>Minor Harm</b>	Minor harm to a designated heritage asset (or its setting), or non-designated asset (or its setting) of interest such that the level of harm will demonstrably have a minor affect on the area and its heritage resource, either at a local or regional level. For instance grade II listed buildings, Conservation Areas and undesignated heritage assets important at a sub-national level.
<b>Moderate Harm</b>	Minor harm to a designated heritage asset (or its setting) of the highest significance or non-designated asset (or its setting) of interest of demonstrable significance equal to that of a scheduled monument. For instance scheduled monuments, grade I/II* listed buildings, grade I/II* registered parks and gardens, registered battlefields, protected wrecks or World Heritage Sites. Harm to a designated heritage asset (or its setting), or non-designated asset (or its setting) of interest such that the level of harm will demonstrably affect the area and its heritage resource, either at a local or regional level. For instance grade II listed buildings, Conservation Areas and undesignated heritage assets important at a sub-national level.
<b>Major Harm</b>	Harm to a designated heritage asset (or its setting) of the highest significance, or non-designated asset (or its setting) of interest of demonstrable significance equal to that of a scheduled monument. For instance scheduled monuments, grade I/II* listed buildings, grade I/II* registered parks and gardens, registered battlefields, protected wrecks, World Heritage Sites or harm to a building or other element that makes a positive contribution to the significance of a Conservation Area as a whole. Substantial harm to, or loss of, a designated heritage asset (or its setting), or non-designated asset (or its setting) of interest such that the level of harm or loss will demonstrably affect the area and its heritage resource, either at a local or regional level. For instance grade II listed buildings, Conservation Areas and undesignated heritage assets important at a sub-national level.
<b>Substantial Harm</b>	Substantial harm to, or loss of, a designated heritage asset (or its setting) of the highest significance, or non-designated asset (or its setting) of interest of demonstrable significance equal to that of a scheduled monument. For instance scheduled monuments, grade I/II* listed buildings, grade I/II* registered parks and gardens, registered battlefields, protected wrecks, World Heritage Sites or the loss of a building or other element that makes a positive contribution to the significance of a Conservation Area as a whole
<b>Unknown</b>	Where there is insufficient information to determine either significance or impact for any heritage asset, or where a heritage asset is likely to exist but this has not been established, or where there is insufficient evidence for the absence of a heritage asset. For instance where further information will enable the planning authority to make an informed decision.

## 4.2 Assessment of Harm

### 4.2.1 Archaeology

The impact upon the unknown archaeological remains suspected to survive within the site cannot be quantified in detail as there are no proposals for comparison. However, given the nature of modern development, the depth of foundations and drainage, it is likely that any archaeology would be removed as a result of the development. This would be a **Major Harm** impact.

### 4.2.2 Built Heritage

There are no built heritage within the SUB54 site.

### 4.2.3 Settings

The SUB22 site lies within the River Severn/Hempsted Village Fringe Landscape Conservation Area. Therefore any development within the site would comprise this Landscape Character Area. This would cause **Minor Harm** to the setting of the LCA.

### 4.3 Improvements and Enhancements

Retention of the current hedgerows around the site would be an **enhancement** and would retain the rural feel of the area.

## 5. Planning Requirements

Any application for this site should be supported by a description of the significance of heritage assets likely to be affected by the proposed development. In the first instance applicants should provide a desk-based assessment describing the archaeological potential of the site.

Should the assessment indicate that the proposed development has the potential to conflict with buried archaeological remains, then there will be a need to undertake an archaeological evaluation (trial trenching supported by geophysical survey) to investigate in detail the presence/absence, character, significance and depth of archaeological remains within the site.

Reports outlining the results of each stage of work will need to be submitted in support of the application. This is in accordance with paragraph 128 of the NPPF (DCLG 2012) and policies BE.32 and BE.33 of the Second Stage Deposit Draft of the Gloucester Local Plan 2002 (GCC 2002).

A design and character assessment would need to be produced in order to provide information on heights, massing and scale of the proposed development. This is in accordance with paragraphs 61, 64 and 131 of the NPPF (DCLG 2012) and policies BE.7 and BE.22 of the Second Stage Deposit Draft of the Gloucester Local Plan 2002 (GCC 2002).

## 6. Minimising Harm

Should any development be proposed, then a number of actions are recommended to mitigate the impacts identified above.

- Desk-based assessment of the site, in line with relevant guidance produced by the ClfA (ClfA 2014f) and Historic England (EH 2010).
- Geophysical survey of the site, in line with relevant guidance produced by the ClfA (ClfA 2014d).
- Evaluation trenches to identify any possible buried archaeological remains followed by, if necessary, excavation in advance of development or watching brief during construction, in line with relevant guidance produced by the ClfA (ClfA 2014a; ClfA 2014b; ClfA 2014c).
- Key views should be retained within any development.
- The design of any development should take into account the setting of the Landscape Character Area and should reflect the nature and character of this.
- Retention of the existing hedgerows. Additional screening to be added where needed to reduce the visual impact of development.
- Full reporting, publication and dissemination of all results.

The scope and specification of any works would be agreed with the Gloucester City Archaeologist and the Principal Conservation and Design Officer.

## 7. Recommendations

The criteria used for the recommendations are detailed in the table below.

<b>Development allowed</b>	Development can go ahead with no mitigation subject to planning approval of
----------------------------	---

	proposals and designs.
<b>Development Allowed –mitigation programme</b>	Development can go ahead but following a stage or number of stages of mitigation designed to alleviate the impacts of any proposal. Also subject to planning approval of proposals and designs.
<b>No development</b>	No development within this area.

The recommendations are mapped on Figure 5.

The January 2015 SALA report (GCC 2015a) includes the SUB54 site and describes it as 'Topography of site constrains development' (ibid, Appendix 2). Should the site be approved for development for residential, business or industrial use then certain areas of the site would need to be left free of development and some would involve mitigation from the impacts identified above.

## 8. Conclusion

This assessment has looked at the heritage assets within and in the area of the SUB54 and discussed the past and present uses of the site. It has looked at the potential for unknown heritage assets to exist within the site and whether they would be at risk of harm from a development. It is considered that development on the SUB54 site could be delivered without significant impact on the heritage assets of the site provided that the actions proposed to minimise the impacts of development, as detailed above, are followed.

Taking into account the impacts discussed and the recommendations to avoid harm to the heritage assets, of the 1.47 hectares of the site, a total area of 0 hectares would be unavailable leaving an area of **1.47 hectares available for development**. This figure is indicative only – the final extent of mitigation will need to be agreed in consultation with the City Archaeologist and Principal Conservation and Design Officer.

## 9. Bibliography

Baddeley, W, St Clair, 1913 *Place-names of Gloucestershire: a Handbook*, Gloucester

BGS 2015 *Geology of Britain*, British Geological Survey  
(<http://mapapps.bgs.ac.uk/geologyofbritain/home.html?>) accessed 29<sup>th</sup> September 2015

ClfA 2014a *Standard and Guidance for an Archaeological Watching Brief*, Chartered Institute for Archaeologists

ClfA 2014b *Standard and Guidance for Archaeological Excavation*, Chartered Institute for Archaeologists

ClfA 2014c *Standard and Guidance for Archaeological Field Evaluation*, Chartered Institute for Archaeologists

ClfA 2014d *Standard and Guidance for Archaeological Geophysical Survey*, Chartered Institute for Archaeologists

ClfA 2014e *Standard and Guidance for the Archaeological Investigation and Recording of Standing Buildings and Structures*, Chartered Institute for Archaeologists

ClfA 2014f *Standard and Guidance for Historic Environment Desk-based Assessment*, Chartered Institute for Archaeologists

- DCLG 2012 *National Planning Policy Framework*, Department for Communities and Local Government
- GCC 2002 *City of Gloucester Local Plan: Second Stage Deposit*, Gloucester City Council, draft document dated August 2002
- GCC 2015a *Strategic Assessment of Land Availability*, Gloucester City Council, document dated January 2015
- GCC 2015b *Method Statement: Site Historic Environment Assessments for Strategic Assessment of Land Availability (SALA)*, Gloucester City Council, unpublished document dated September 2015
- GCC 2016 *Site Historic Environment Assessment for Strategic Assessment of Land Availability (SALA)*, Gloucester City Council, document dated August 2016
- HE 2015a *Digital Image Capture and File Storage, Guidelines for Best Practice*, Historic England
- HE 2015b *The Historic Environment in Local Plans*, Historic England
- HE 2015c *Managing significance in decision making*, Historic England
- HE 2015d *The Setting of Heritage Assets*, Historic England
- HE 2015e *The Historic Environment and Site Allocations in Local Plans*, Historic England
- Herbert, N M (ed), 1988 *A History of the County of Gloucester: Volume 4, the City of Gloucester*, Victoria County Histories
- Moore, J S, 1982 *Domesday Book, 15 Gloucestershire*, Phillimore, Chichester
- NPPG 2014 <http://planningguidance.planningportal.gov.uk/>, accessed 1<sup>st</sup> Sept 2015
- UKSO 2015 *Soils Map Viewer*, UK Soil Observatory, (<http://mapapps2.bgs.ac.uk/ukso/home.html?>) accessed 29<sup>th</sup> September 2015
- Verey, D and Brooks, A, 2002 *The Buildings of England, Gloucestershire 2: The Vale and The Forest of Dean*, Yale University Press

## 10. Appendix I: Table of designated and undesignated assets

Those marked in **bold** are within the site.

HER	Name	Period	Type	Details
GUAD706	St Swithun's Road	Medieval Post-medieval	Field Observation	Village cross of 15 <sup>th</sup> C. Steps moved to current position by 1836. Shaft recovered in 1839 and restored to original position. Upper portion carved in 1850.
GUAD1187	Court Gardens	Medieval	Documentary Record	Documents show existence of medieval Hempsted Court
GUAD1188	Rectory Lane	Post-medieval	Field Observation	Black slag bricks from Gloucester Glasshouse used in wall
GUAD1189	St Swithun's churchyard	Romano-British	Glass	Stray find of glass fragment. Found while digging grave.
GUAD1190	St Swithun's churchyard	Romano-British	Pottery	Stray find of 3 <sup>rd</sup> to 4 <sup>th</sup> C greyware with external frill and recess for lid. Made in kiln at Congresbury, Somerset. Found while digging grave.
GUAD1191	St Swithun's Church	Medieval	Documentary Record	Historic documents show 11 <sup>th</sup> C origin of church and rebuilding in 15 <sup>th</sup> C
GUAD1203	27 Court Gardens	Medieval	Watching Brief	11 <sup>th</sup> to 12 <sup>th</sup> C pottery recovered from buried soil layer
GUAD1207	Hempsted School	Medieval Post-medieval	Watching Brief	New school. No features recorded but 12 <sup>th</sup> and 19 <sup>th</sup> C pottery found.
GUAD1216	Hempsted Lane	Medieval	Watching Brief	Medieval metalled road surface and later surfaces recorded in gas main trenches.
GUAD1222	1 Court Gardens	Post-medieval	Watching Brief	Demolition rubble and wall associated with Hempsted Court
GUAD1277	The Grove	Undated	Field Observation	Undated earthworks of ditch and bank forming field boundary
GUAD1280	South West Bypass	-	Excavation	No archaeological deposits recorded
GUAD1295	Waters Reach	Medieval	Watching Brief	Medieval pit revealed
GUAD1296	158 Hempsted Lane	-	Watching Brief	Only worked soils and natural geology recorded
GUAD1302	Netheridge Wetlands	Romano-British	Evaluation	Possible Romano-British ditch recorded. Whole site has been truncated and topsoil removed
GUAD1310	Church Farm	-	Watching Brief	Only worked soils recorded
GUAD1592	3 Prospect Terrace	-	Watching Brief	Only garden soils and natural geology recorded
GUAD1645	Land east of Hempsted	-	Geophysical Survey Evaluation	No archaeological deposits recorded
GUAD1665	Netheridge Wetlands	-	Geophysical Survey	Possible archaeological features recorded
GUAD1694	Western Radial Road	-	Geophysical Survey	Possible archaeological features recorded
GUAD1704	South West Bypass	Post-	Watching Brief	Post-medieval ditches and

		medieval		furrows, backfilled brook and spread of post-medieval building rubble
GUAD1723	Canal Corridor		Desk-based Assessment	Assessment of five sites showed potential for unknown prehistoric, Roman, medieval and post-medieval sites in the area.
GUAD1875	South West Bypass	Modern	Watching Brief	World War II petrol storage tanks with associated shelters recorded
GUAD2101	Hempsted School	-	Watching Brief	Only natural geology and plough-soils recorded
GUAD2116	Hempsted School	-	Watching Brief	Only natural geology and worked soils recorded
GUAD2156	St Swithun's Church	Medieval Post-medieval	Building Recording	Assessment showed church was 14 <sup>th</sup> C in origin and rebuilt in 1467-77. Restored and refitted 1837-9 and restored and extended 1885-6
GUAD2222	Land at Hempsted	-	Desk-based Assessment	Revealed Roman evidence within the area but not close to site. Earthworks of ridge and furrow recorded. Potential for pre-medieval remains to survive in site
GUAD2233	Land at Hempsted	-	Geophysical Survey	Evidence of ridge and furrow, field boundaries and a building. Ridge and furrow possibly masking earlier remains.
GUAD2244	Land east of Hempsted Lane	Romano-British Medieval Post-medieval	Evaluation	Romano-British and medieval pot recovered. Undated ditches, post, post-medieval post-pad, field boundary ditch, ridge and furrow and a pond all recorded
GUAD2257	Land at Rea Back	-	Desk-based Assessment	Recorded undated boat wreck on River Severn west bank, revealed possible prehistoric or Roman seasonal wetland exploitation and historic field boundaries, post-medieval ridge and furrow and drainage ditches.
GHER38509	East of Upper Rea Farm	Post-medieval	Earthworks	Linear ditch complex
NMR SO 81 NW 441	East of Upper Rea Farm	Post-medieval	Earthworks	Post-medieval drainage complex of ditches in herringbone pattern visible on 1950s aerial photographs
NHLE1002072	Hempsted Cross	Medieval	Scheduled Monument	Medieval cross
NHLE1245659	Hempsted House	Post-medieval	Listed Building	Grade II listed late 17 <sup>th</sup> C rectory now house
NHLE1271737	Church Farmhouse	Medieval Post-medieval	Listed Building	Grade II listed mid or late 16 <sup>th</sup> C part timber-frame farmhouse with later additions
NHLE1271738	Churchyard Wall	Post-medieval	Listed building	Grade II listed south boundary wall of churchyard. Late 17 <sup>th</sup> C with early 18 <sup>th</sup> C and 19 <sup>th</sup> C repairs. Blocked gateway in

				centre.
NHLE1271743	St Swithun's Church	Medieval Post- medieval	Listed Building	Grade II* parish church dating from 14 <sup>th</sup> C
NHLE1271745	Hempsted Cross	Medieval Post- medieval	Listed Building	Grade II* listed village cross of early 15 <sup>th</sup> C with 19 <sup>th</sup> C top

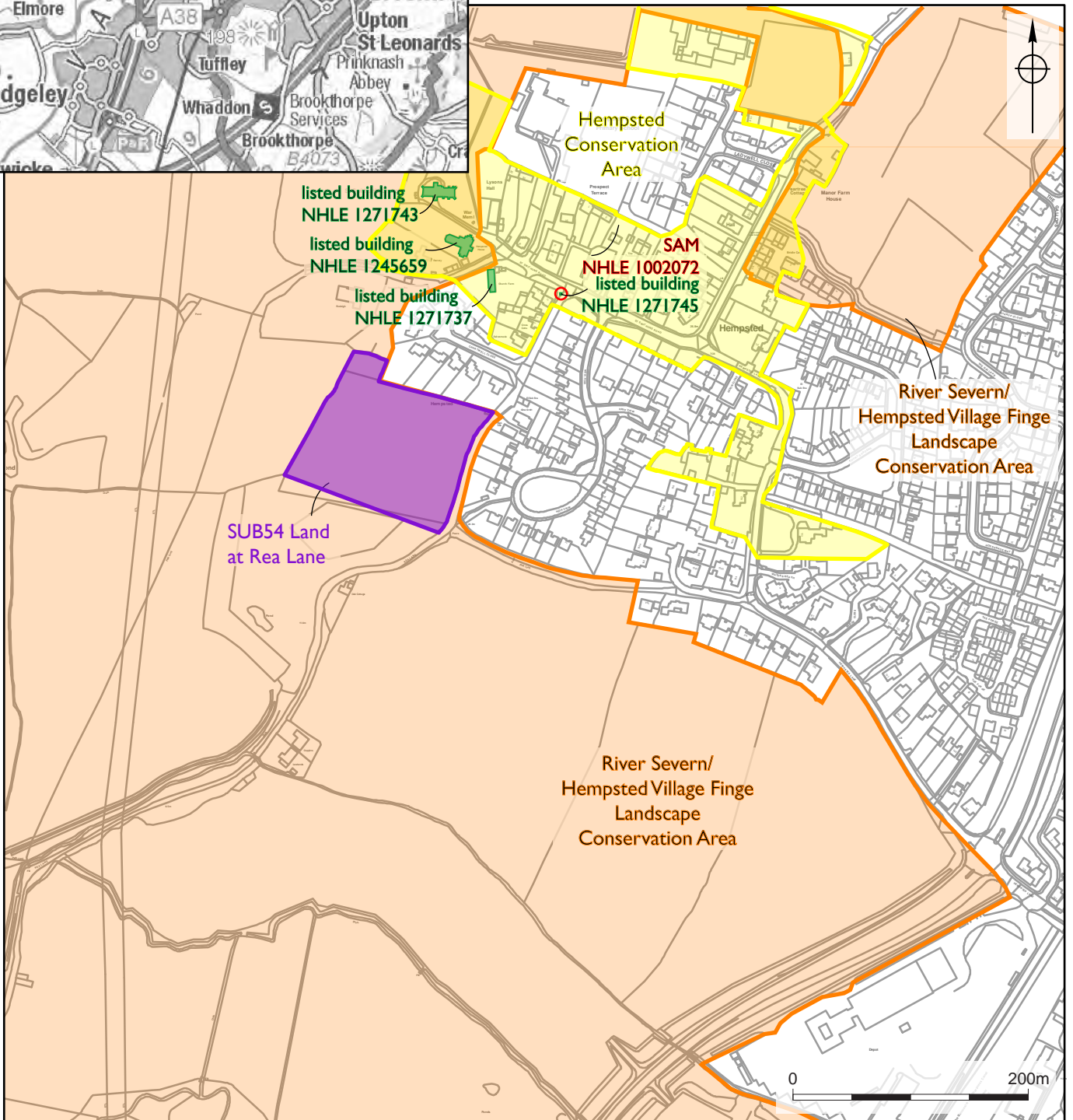
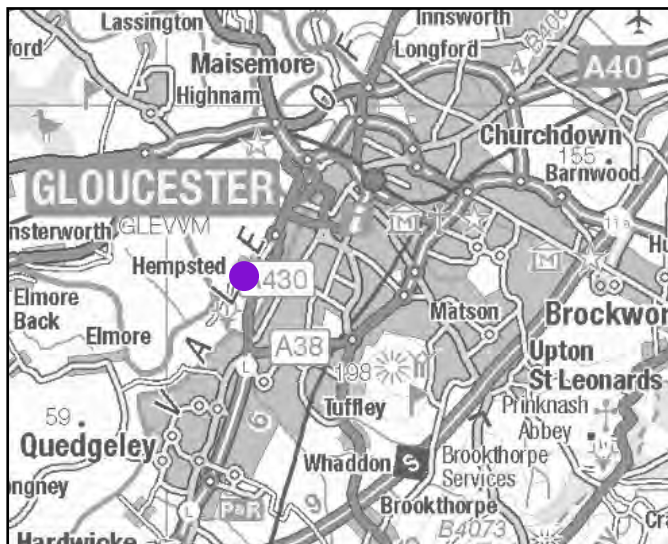
## II. Plates



Plate I View of the site from the north east

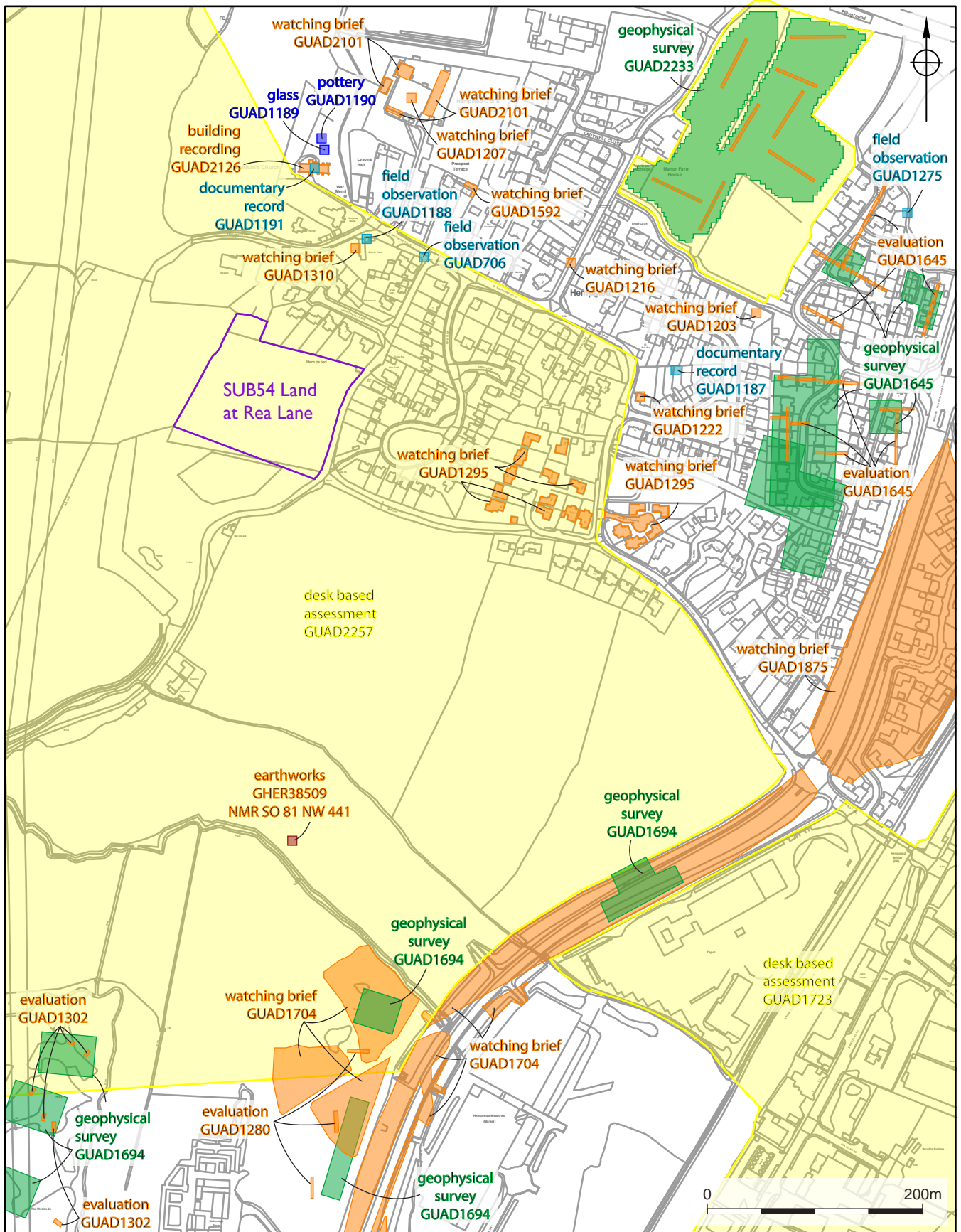


## 12. Figures



This map is reproduced from Ordnance Survey material with the permission of Ordnance Survey on behalf of the Controller of Her Majesty's Stationary Office © Crown Copyright. Unauthorized reproduction infringes Crown Copyright and may lead to prosecution or civil proceedings. Licence 100019169. 2015

Figure I - Site Location



This map is reproduced from Ordnance Survey material with the permission of Ordnance Survey on behalf of the Controller of Her Majesty's Stationary Office © Crown Copyright. Unauthorized reproduction infringes Crown Copyright and may lead to prosecution or civil proceedings. Licence 100019169. 2015

Figure 2 - Archaeological Information



1583 Saxton map



1811 Dawson map



1794 Cary map

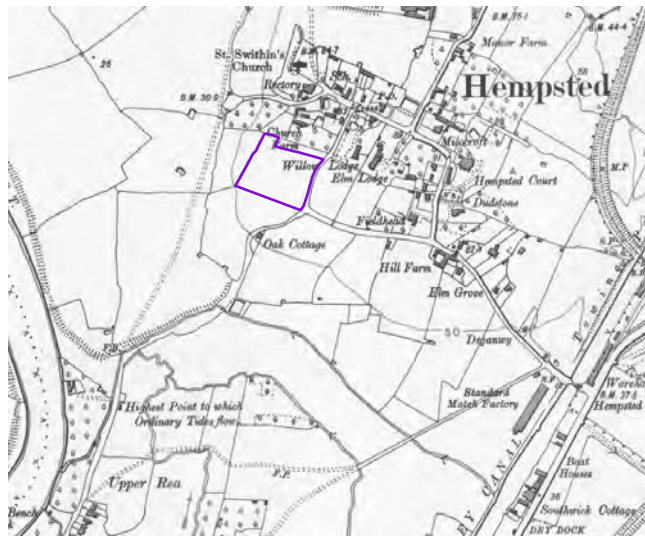


1831 Ordnance Survey

Figure 3 - Historical mapping



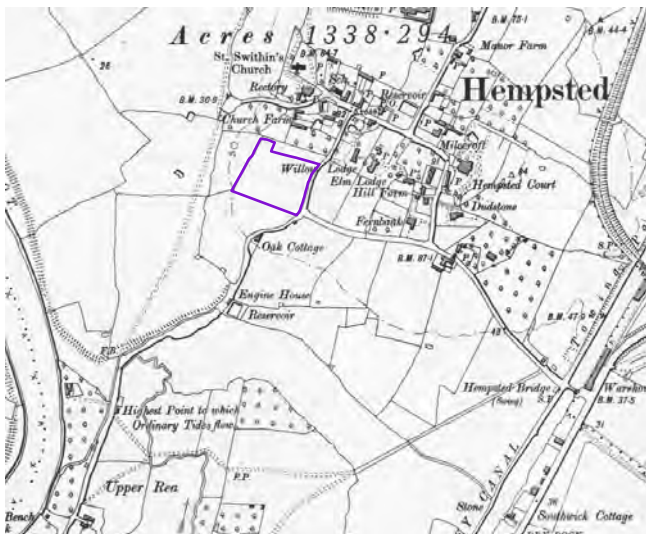
1884 Ordnance Survey



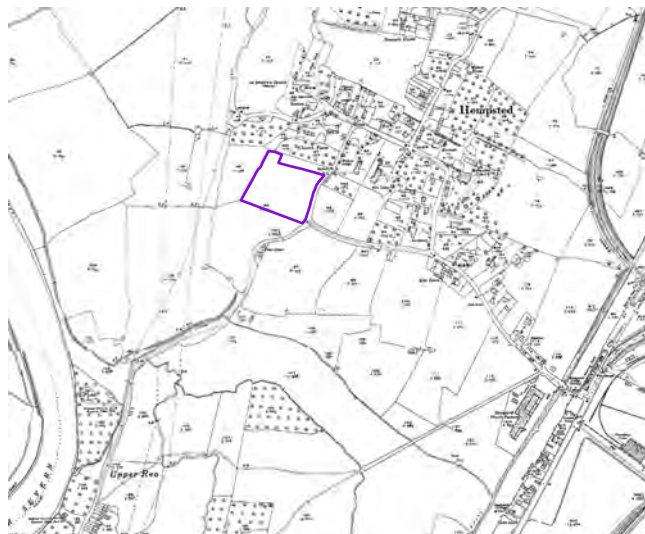
1924 Ordnance Survey



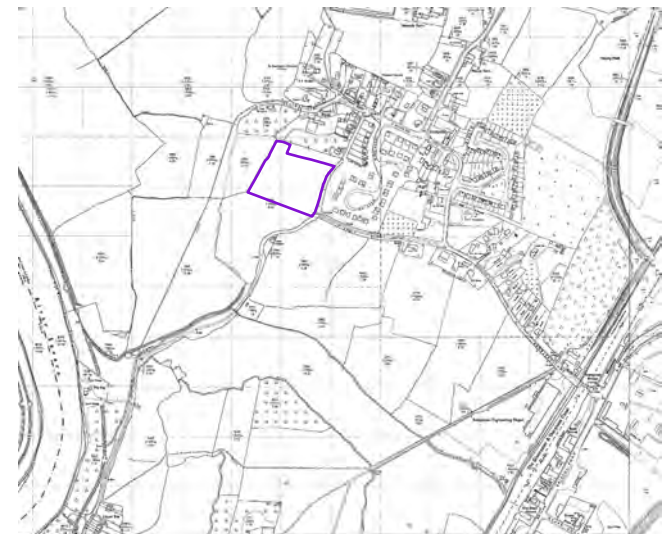
1942 Land Utilisation plan



1903 Ordnance Survey

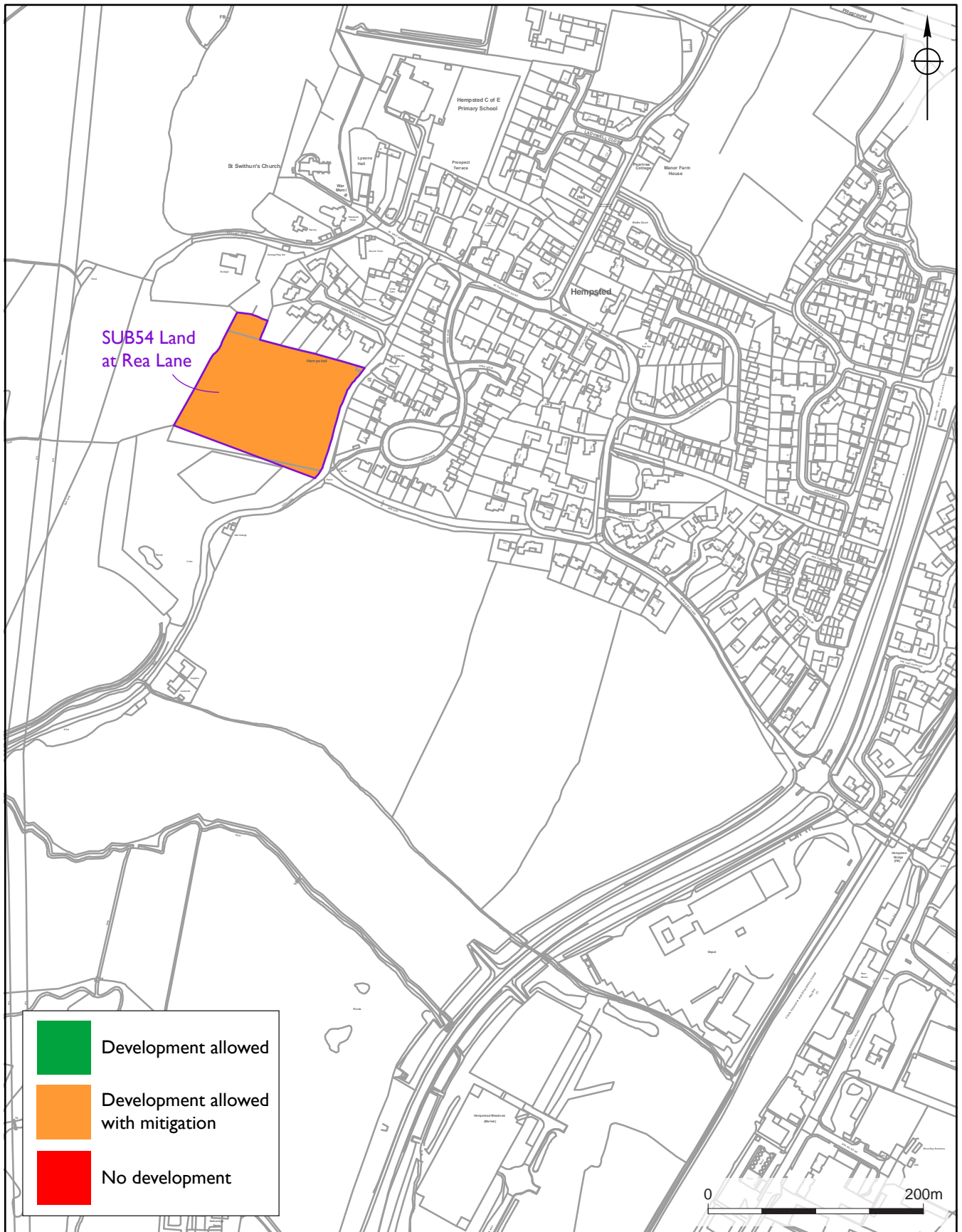


1936 Ordnance Survey



1955-56 Ordnance Survey

Figure 4 - Historical mapping



This map is reproduced from Ordnance Survey material with the permission of Ordnance Survey on behalf of the Controller of Her Majesty's Stationary Office © Crown Copyright. Unauthorized reproduction infringes Crown Copyright and may lead to prosecution or civil proceedings. Licence 100019169. 2015

Figure 5 - Recommendations