

Green Areas Issues Paper

Green areas are valuable for many different reasons. People use them for exercise or to relax, getting away from the noise of the city. They help to break up lines of buildings, and provide safe homes for wildlife. Green areas include public open space, private playing fields, Landscape Conservation Areas and Nature Conservation Areas.

Gloucester is a growth centre for new homes and businesses in the county. A high quality environment is essential if Gloucester is to be a desirable place to live and attractive to new business investment. The government is encouraging the best use of land in towns and cities to help protect the countryside from development. As pressure for development in the city continues, there is a need to ensure that new development is not at the expense of valuable green areas that contribute to a high quality environment. These areas should be protected unless there are exceptional circumstances that justify development. Once green areas are built on, they are lost forever.

The main routes into the city provide visitors with their first glimpse of Gloucester. Some routes, such as Bristol Road, do not look very attractive at the moment. We want to improve their appearance to make them impressive 'gateways' into the city.

We need your views on which green areas in Gloucester should be protected and how we can provide the best range of recreational and leisure opportunities that residents want.

Other Plans

The Council is preparing two other plans, the City Plan and the Corporate Development Plan:

- The City Plan will set out a general vision of the city's future over the next 10 to 20 years. This is being done in partnership with local community groups and other agencies. A draft City Plan is expected to be available for public consultation in June 2000.
- The Corporate Development Plan reflects the new agenda of the government. It has six key policy objectives: fairness, sustainable development, community safety, healthy living, learning and aspiration, and modern local government.

The Local Plan will be consistent with these other plans. They will provide a context for the land use objectives of the Local Plan.

Consultation and Participation

We will be holding exhibitions and informal meetings around the city. Come along and have a chat about what the Local Plan could mean for you. The dates and locations are set out below. All exhibitions will be attended by staff and informal meetings will be held in the evenings.

Exhibitions	Date
• Eastgate Shopping Centre	May 8th-12th (9-5.30pm)
• Sainsbury, Barnwood	May 15th-19th (9-5.30pm)
• Safeway, Abbeydale	May 22nd-26th (9-5.30pm)
• Asda, Bruton Way	May 30th-June 2nd (9-5.30pm)
• Tesco, Quedgeley	June 5th-9th (9-5.30pm)
• Eastgate Shopping Centre	June 12th-16th (9-5.30pm)
• Herbert Warehouse Reception	May 8th-June 16th (9-5pm)

Informal Meetings	Date
• North Warehouse, The Docks	May 11th (6-8pm)
• Matson Neighbourhood Project, Matson Lane	May 18th (6-8pm)
• Longlevens Community Centre, Church Rd	May 25th (7-9pm)
• Barton Community Centre, Conduit St	June 1st (6-8pm)
• Quedgeley Community Centre, School Lane	June 8th (6-8pm)
• Hucclecote Community Centre, Hucclecote Rd	June 13th (6-8pm)

There will also be 'topic' meetings for residents, landowners, developers and other interested parties to discuss issues in a little more depth. These will be held in the Council Offices, North Warehouse at The Docks. The dates for these are set out below with all meetings starting at 6pm and ending at 9pm.

Topic Meetings	Venue	Date
• Housing/Employment	Ctte. Room 1	May 9th
• Central Gloucester/Shopping	Ctte. Room 1	May 16th
• Travel and Accessibility	Civic Suite	May 23rd
• Green Areas	Ctte. Room 1	June 7th

Comments and Contacts

All comments on the Issues Papers should be made in writing to: **Head of Planning Services, Gloucester City Council, Herbert Warehouse, The Docks, Gloucester, GL1 2EQ**, by Friday 16th June at the latest.

You may use the comment form provided or write a letter. You can comment by e-mailing localplan@gloucester.gov.uk or use the talkback facility on the Council's website www.gloucester.gov.uk

When the consultation period has ended, all comments on land use issues will be considered by the Council in preparing the draft Local Plan. We intend to get the draft Local Plan 'on deposit' in April 2001 and this will be the next stage for public comment. For further information please call the Local Plan Team on 396831.

اگر آپ کو اس دستاویز کا اردو ترجمہ درکار ہے تو براہ مہربانی اس نمبر پر فون کریں۔ 01452 396909
 या डॉक्युमेंट नी युएचवडी मऊव पोर्थली होव वी ०९३७२ ३९६९०९ नं०वर वर होव कुवली.
 এই ডিফেন্ডেন্টসি বাংসা অনুবাদ চাইলে দয়া করে ০১৪৫২ ৩৯৬৯০৯ নম্বরে ফোন করবেন।
 如果你希望我們把這份單張翻譯為中文，請致電 01452 396909

Local Plan Review Green Areas Issues Paper



Photo by T. Hickey

The Local Plan shows where new development should go. It identifies sites for new homes, businesses and shops. At the same time, it also protects the best parts of our city. The Local Plan is being reviewed to guide development for the next decade and we have produced several Issues Papers for you to comment on (Overall Strategy, Central Gloucester, Shopping, Housing, Employment, Green Areas, Travel and Accessibility). This is your chance to say how Gloucester should be planned over the next ten years.

The government sets the framework for local plans. New development must be sustainable: what we do today should leave our children with a better environment. So we need to protect our green spaces by building on previously developed land as far as possible. We need to put jobs, homes, and shops close together so that people do not have to make expensive trips which cause traffic congestion and pollution. And we need to revitalise central Gloucester as a place open to everyone to live, work and enjoy themselves.

What we mean by...

Green Areas: include Landscape Conservation Areas, Nature Conservation Areas, public open space and private playing fields.

Landscape Conservation Areas: areas of open space which have been assessed as containing inherent landscape value and/or provide important green space and natural breaks in the urban environment.

Nature Conservation Areas: areas of nature conservation importance within the city which have been identified through the Nature Conservation Strategy and given a grading A, B, C or D to reflect the wildlife value of the site. (These areas are shown in the current Local Plan.)

Public Open Space: land that is freely available for public use of a size and location suitable for recreational activity. (A Draft Strategy for Public Open Space has recently been the subject of public consultation.)

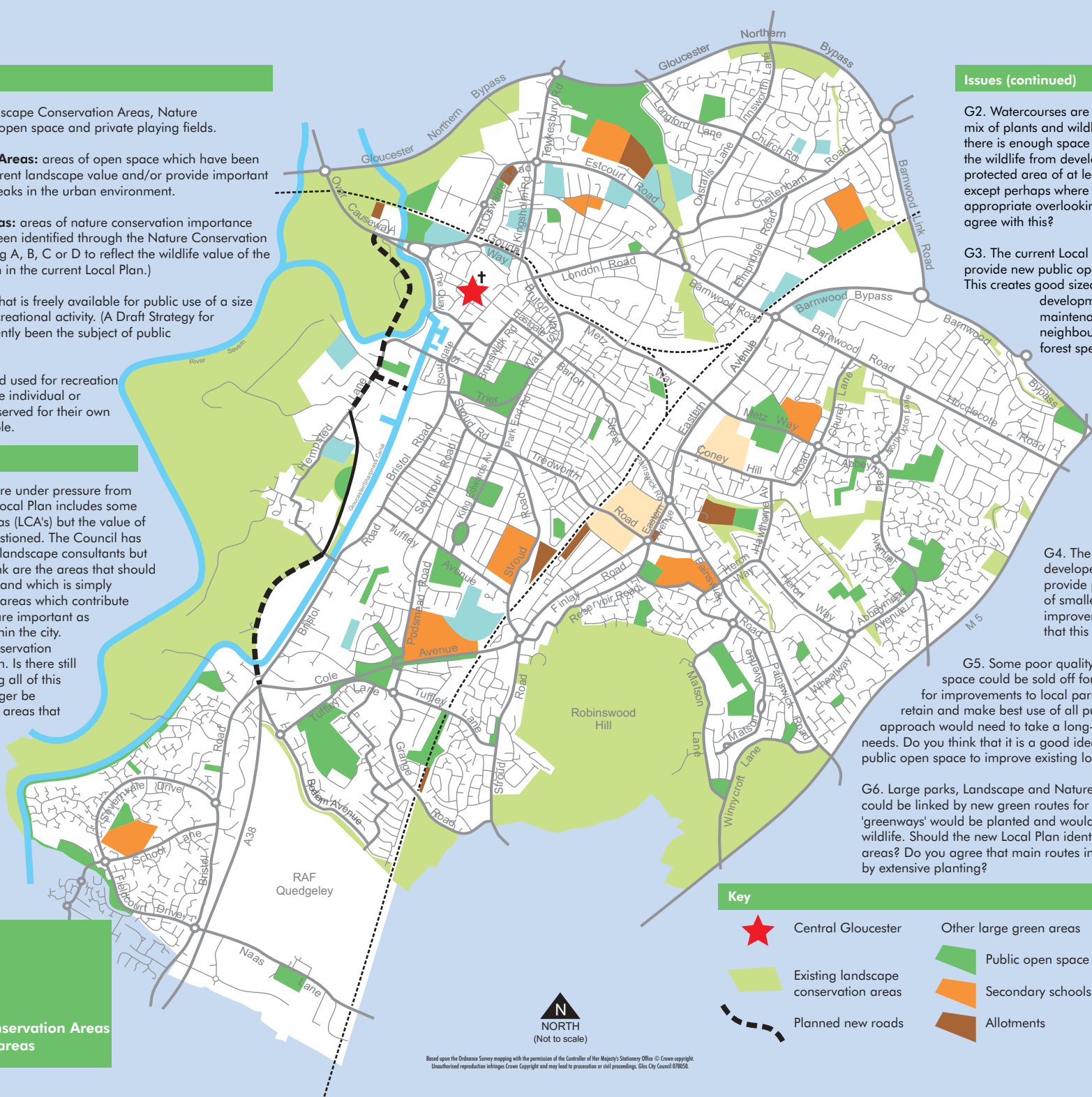
Private Playing Fields: land used for recreation purposes owned by a private individual or organisation and usually reserved for their own use and not publicly available.

Issues

G1. The city's green areas are under pressure from development. The current Local Plan includes some landscape conservation areas (LCA's) but the value of some of them has been questioned. The Council has already asked independent landscape consultants but wants to know what you think are the areas that should be protected. LCA's can be land which is simply attractive. They can also be areas which contribute to the setting of the city, or are important as green "lungs" or buffers within the city. The existing Landscape Conservation Areas are shown on the plan. Is there still a good reason for protecting all of this land or should some no longer be designated? Are there other areas that should be designated? The plan shows some of the other large open areas in the city that are not currently designated as LCA's. We would welcome your suggestions.

Local Plan Review
Green Areas
Issues Paper

Plan for Issue G.1
Existing Landscape Conservation Areas
and other large green areas



Issues (continued)

G2. Watercourses are important for supporting a good mix of plants and wildlife habitats. We need to ensure there is enough space around the watercourses to protect the wildlife from development. One idea is to have a protected area of at least 8m either side of watercourses, except perhaps where housing or other uses may be appropriate overlooking the river and canal. Do you agree with this?









G3. The current Local Plan requires housing developers to provide new public open space of at least half an acre. This creates good sized open areas in housing developments which help reduce maintenance costs and potential nuisance to neighbours, as well as providing room for forest species trees to mature. However, we could provide smaller open space areas in new housing developments as well as larger open areas. This would mean more people being closer to public open spaces. Is this a good idea for Gloucester, or should we continue to ensure that all new open spaces in housing are at least half an acre in size?

G4. The current Local Plan does not require developers of sites of less than 35 houses to provide public open spaces. But developers of smaller sites could help pay for improvements to local parks. Do you think that this is a good idea?

G5. Some poor quality or unusable areas of public open space could be sold off for other uses. The money could pay for improvements to local parks. The current Local Plan seeks to retain and make best use of all public open space. Any change of approach would need to take a long-term view of the community's needs. Do you think that it is a good idea to sell unwanted, poor quality, public open space to improve existing local parks or to create new areas?

G6. Large parks, Landscape and Nature Conservation Areas within the city could be linked by new green routes for pedestrians and cyclists. These 'greenways' would be planted and would provide valuable habitats for wildlife. Should the new Local Plan identify 'greenways' linking major open areas? Do you agree that main routes into the city should also be improved by extensive planting?

Key

-  Central Gloucester
-  Existing landscape conservation areas
-  Planned new roads
-  Public open space
-  Secondary schools
-  Allotments
-  Private sports grounds
-  Cemeteries

