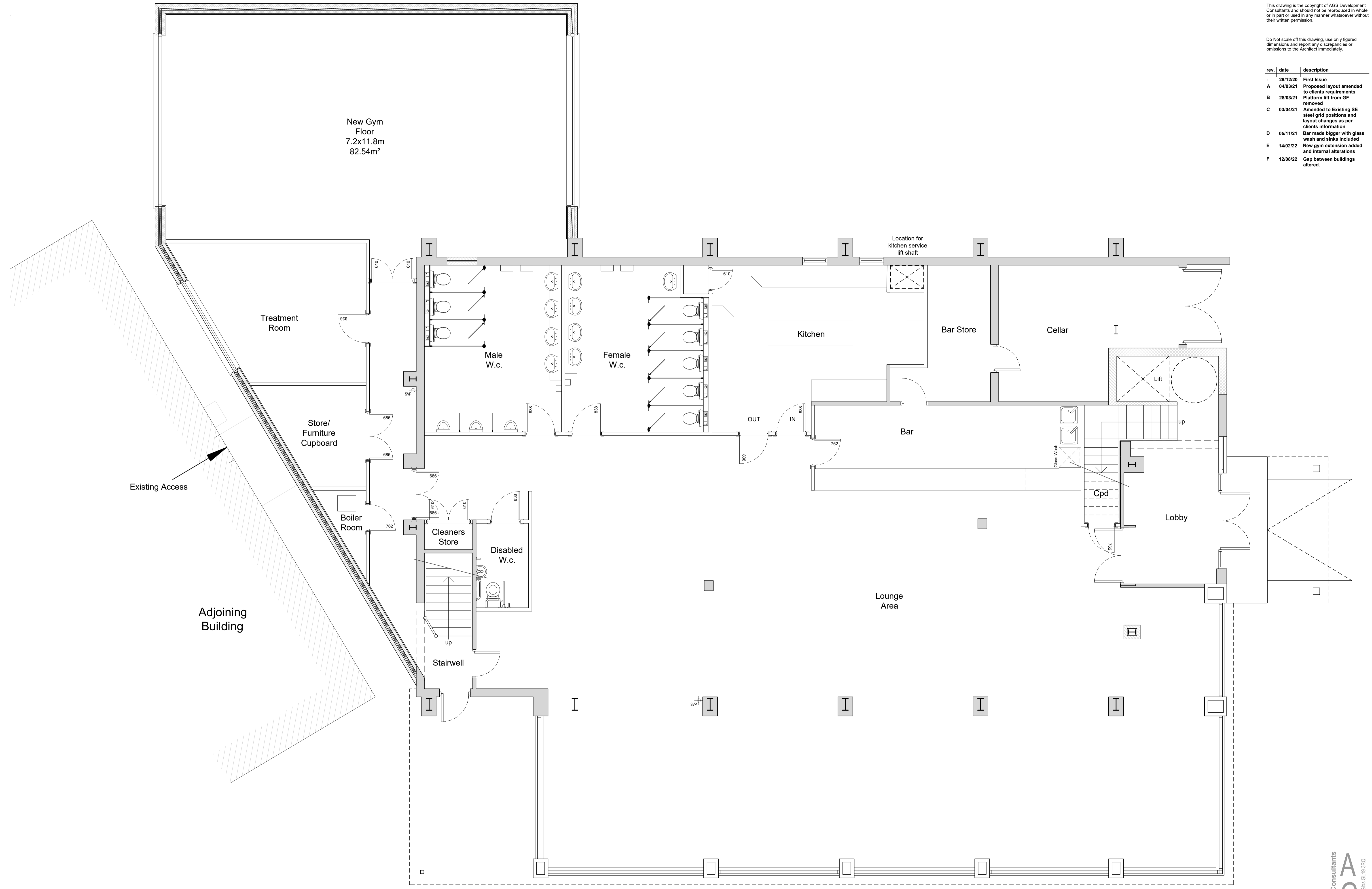


This drawing is the copyright of AGS Development Consultants and should not be reproduced in whole or in part or used in any manner whatsoever without their written permission.

Do Not scale off this drawing, use only figured dimensions and report any discrepancies or omissions to the Architect immediately.

rev.	date	description
-	29/12/20	First Issue
A	04/03/21	Proposed layout amended to clients requirements
B	28/03/21	Platform lift from GF removed
C	03/04/21	Amended to Existing SE steel grid positions and layout changes as per clients information
D	05/11/21	Bar made bigger with glass wash and sinks included
E	14/02/22	New gym extension added and internal alterations
F	12/08/22	Gap between buildings altered.



Planning

Proposed Alterations to Longlevens Rugby Clubhouse,  
Longford Lane, Longlevens, Gloucester, GL2 9EU

Proposed Ground Floor Plan (Phase 1) Date: Jan 2021

Scale: 1/50 @ A1 Drawing No707 / 007 Rev F

Development Consultants  
**AGS**  
 Colin Chang, Colin, Giles GL19 3RQ

Subject to correct printing. See top left.