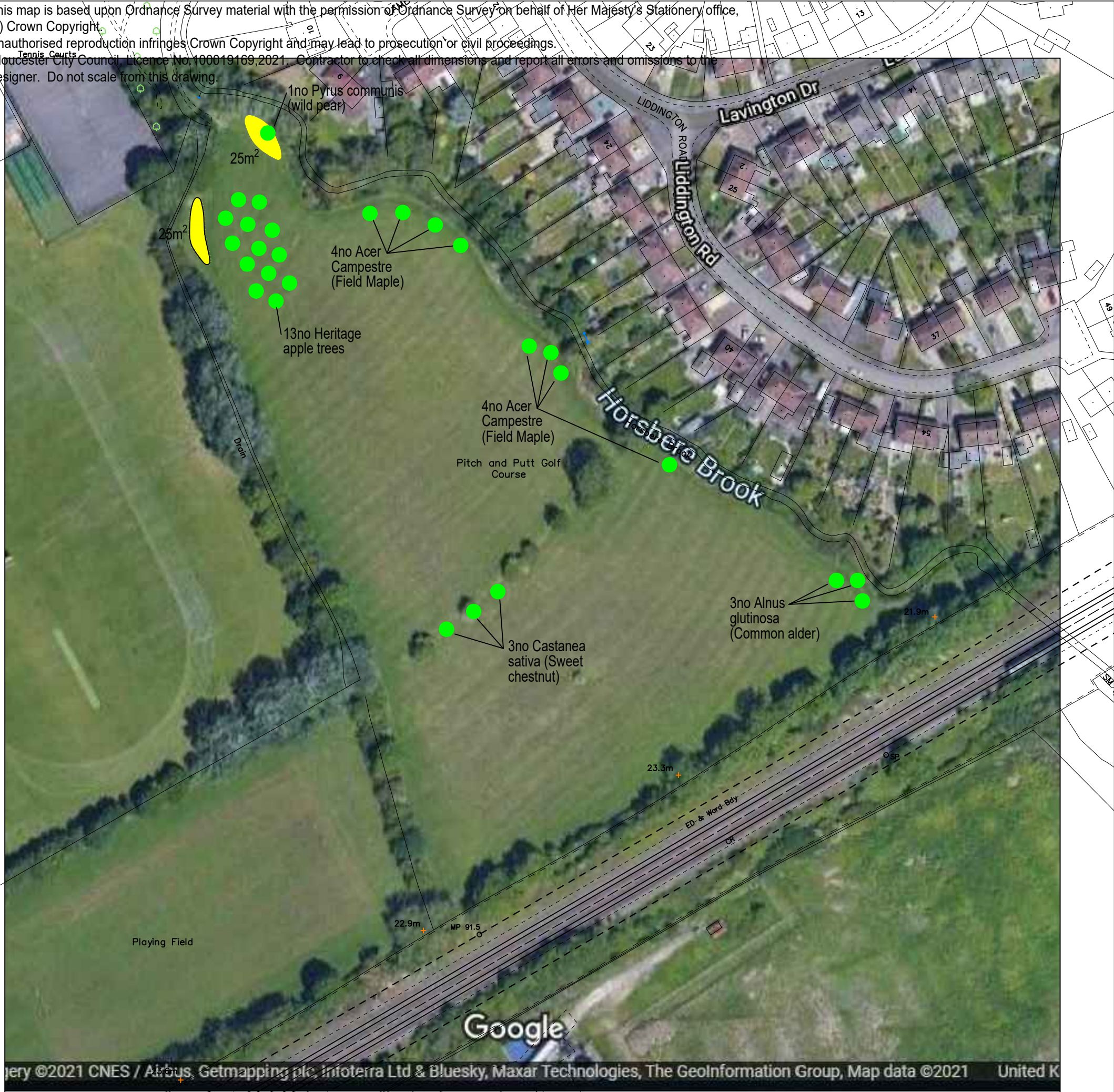
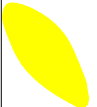



This map is based upon Ordnance Survey material with the permission of Ordnance Survey on behalf of Her Majesty's Stationery office,
 (c) Crown Copyright.
 Gloucester City Council, Licence No. 100019169, 2021. Contractor to check all dimensions and report all errors and omissions to the designer. Do not scale from this drawing.



-  Native daffodils (*Narcissus Pseudonarcissus*) at approx 30bulbs/m2
-  Proposed tree

No bulbs to be planted within 1 metre of paths
 No sowing or planting until GCC has marked the positions on site (min 1 week's notice)

- 13 no. heritage Apple trees
 Species (1 of each, except 2 no. Bramley):
- Blenheim;
 - Bramley;
 - Catshead;
 - Chivers delight;
 - Discovery;
 - Ribston pippin (Jackets & delicot);
 - Lakes kernel;
 - Laxtons superb;
 - Longney russet;
 - Newton wonder;
 - Warners king (Nine square);
 - Rheads rheinette

RevA Wild cherry changed to wild pear JL NC Oct 21



Project
 MEADOWS AND PLANTING 2021
 GLOUCESTER

Drawing
 Sandyleaze

Drawn by: JL	Date: Aug 21
Checked by: NC	Date: Aug 21
Approved by:	Date:
Drawing No. ERDFS00_Sandyleaze_Proposed Planting_006	Revision A

Drawing Scale: 1:1250 @ A3