



# GLOUCESTER PLAYING PITCH STRATEGY

2015 - 2025

Integrity, Innovation, Inspiration

1-2 Frecheville Court ◀ off Knowsley Street ◀ Barnet BL9 0UF  
**T** 0161 764 7040 ◀ **F** 0161 764 7490 ◀ **E** mail@kcp.co.uk ◀ **www.kcp.co.uk**





# GLOUCESTER PLAYING PITCH STRATEGY

---

## CONTENTS

PART 1: INTRODUCTION.....	1
PART 2: AIMS .....	4
PART 3: SPORT SPECIFIC ISSUES SCENARIOS AND RECOMMENDATIONS.....	5
PART 4: STRATEGIC RECOMMENDATIONS .....	14
PART 5: ACTION PLAN .....	29
PART 6: DELIVER THE STRATEGY AND KEEP IT ROBUST AND UP TO DATE.....	49
APPENDIX ONE: STRATEGIC CONTEXT.....	53
APPENDIX TWO: FUNDING PLAN .....	61
APPENDIX THREE: FOOTBALL AGP SCENARIO .....	66
APPENDIX FOUR: RUGBY UNION TRAINING SCENARIO .....	67
APPENDIX FIVE: HOUSING GROWTH SCENARIO.....	71
APPENDIX SIX: REFERENCE MAPS (BY SITE ID NUMBER) .....	75



# GLOUCESTER PLAYING PITCH STRATEGY

---

## PART 1: INTRODUCTION

This is the Playing Pitch Strategy (PPS) for Gloucester. Building upon the preceding Assessment Report, it provides a clear, strategic framework for the maintenance and improvement of existing outdoor sports pitches and ancillary facilities over the next ten years between 2015 and 2025. The purpose of the PPS is to help us to prioritise and target resources where resources are limited. The PPS covers the following playing pitches and outdoor pitch sports:

- ◀ Football pitches
- ◀ Cricket pitches
- ◀ Rugby union pitches
- ◀ Rugby league pitches
- ◀ Artificial grass pitches (AGPs)
- ◀ Other grass pitch sports including American football and lacrosse
- ◀ Bowling greens
- ◀ Tennis courts

Whilst the PPS focuses on the pitch sports listed above that are primarily played in and around the City, it does also consider the needs of other more 'peripheral' sports such as American football and lacrosse.

The main drivers for undertaking a Playing Pitch Strategy are:

- ◀ To provide adequate planning guidance to assess development proposals affecting playing fields, as appropriate, directing open space contributions secured through development and informing and shaping local planning policy.
- ◀ To inform the protection and provision of sports facilities and the Infrastructure Delivery Plan and S106 and CIL schedules.
- ◀ To inform land use decisions in respect of future use of existing playing fields (capable of accommodating pitches) across the City;
- ◀ To provide a strategic framework for the provision and management of playing pitches across the City;
- ◀ To support external funding bids and maximise support for playing pitch facilities;
- ◀ To provide the basis for on-going monitoring and review of the use, distribution, function, quality and accessibility of playing pitches.

### 1.1 Structure

The Strategy has been developed from research and analysis of playing pitch provision and usage within Gloucester to provide:

- ◀ A vision for the future improvement and prioritisation of playing pitches.
- ◀ A series of strategic recommendations which provide a strategic framework for the improvement, maintenance, development and, as appropriate, rationalisation of the playing pitch stock.
- ◀ A series of sport by sport recommendations which provide a strategic framework for sport led improvements to provision.
- ◀ A prioritised area-by-area action plan to address key issues.

The Strategy and Action Plan recommends a number of priority projects for Gloucester, which should be implemented from 2015 to 2025. It is outlined to provide a framework for improvement and, although resources may not currently be in place to implement it, potential partners and possible sources of external funding will be identified.

# GLOUCESTER PLAYING PITCH STRATEGY

The recommendations that come out of this strategy must be translated into local plan policy so there is a policy mechanism to support delivery and secure provision/investment where the opportunity arises.

There is a need to build key partnerships between the Council, National Governing Bodies of Sport (NGBs), Sport England, schools, further/higher education providers, community clubs and private landowners to maintain and improve playing pitch provision. In these instances, the potential for the Council to take a strategic lead is more limited (except in terms of Section 106 Agreements). This document will provide clarity about the way forward, and allow key organisations to focus on the key issues that they can directly influence and achieve.

## 1.2 Vision

This study has been developed on the basis of the above strategic drivers in order to ensure that it reflects the Council's wider ambitions. A vision has been set out to provide a clear focus with desired outcomes for the Gloucester Playing Pitch Strategy:

*'To provide an accessible, high quality and sustainable network of outdoor sports facilities, which provide opportunities for all residents to access good sport, physical activity and recreation facilities'.*

## 1.3 Headline findings

The table below highlights the quantitative headline findings from the Gloucester Playing Pitch Assessment Report. Surplus or deficit in provision is shown in match sessions, whereby 0.5 match sessions represents a team requiring a pitch once every fortnight based on a home and away league structure.

Sport	Current demand	Future demand (2031 <sup>1</sup> )
Adult football	Shortfall of 9 match sessions	Shortfall of 17.5 match sessions
Youth football 11v11	Shortfall of 6.5 match sessions	Shortfall of 12 match sessions
Youth football 9v9	Minimal match sessions available	Shortfall of 2.5 match sessions.
Mini football 7v7	Shortfall of 1 match session	Shortfall of 3 match sessions.
Mini football 5v5	Minimal match sessions available	Shortfall of 1.5 match sessions.
Football (3G AGPs)	Potential shortfall of up to 3 3G pitches based on FA model for training.	Potential further shortfalls based on FA model for accommodating competitive play.
Cricket	Current demand is being met in terms of quantity but shortfalls in terms of quality on majority of pitches.	Likely to increase further due to potential increase in teams if quality of pitches increases.

<sup>1</sup> Future demand is calculated to 2031 to reflect the Joint Core Strategy which shows how the area will develop during that period even though the PPS itself covers the period up to 2025.

## GLOUCESTER PLAYING PITCH STRATEGY

---

<b>Sport</b>	<b>Current demand</b>	<b>Future demand (2031)</b>
Senior rugby union	Shortfall of 49 match sessions	Shortfall of 51 match sessions
Mini rugby union	No shortfall of match sessions	Shortfall of 5 match sessions
Rugby union (3G AGPs)	Current shortfall of at least 1 rugby union compliant 3G pitch	Future shortfall of union compliant 3G pitches
Hockey (Sand AGPs)	Current demand is being met	Future demand may not be met in light of potential pitch loss

# GLOUCESTER PLAYING PITCH STRATEGY

---

## PART 2: AIMS

The Gloucester PPS is a strategy not just for the local authority, but holistically for sport across the City as a whole.

Delivery of the Strategy is the responsibility of and relies on, *all* stakeholders.

The following overarching aims are based on the three Sport England themes (see figure 1 below). It is recommended that the following are adopted by the Council and its partners to enable it to achieve the overall vision of the Strategy and Sport England planning objectives.

### AIM 1

To **protect** sports facilities for meeting current and future needs

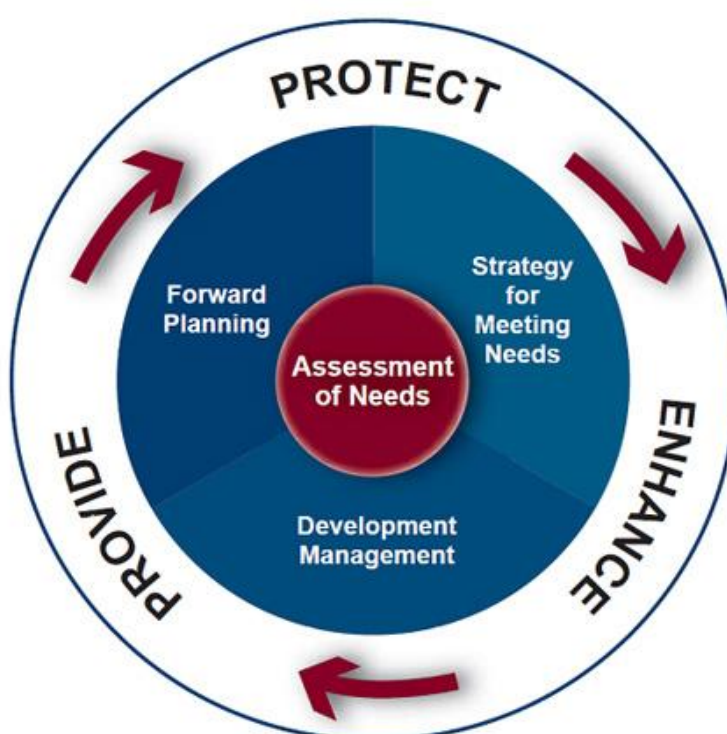
### AIM 2

To **enhance** outdoor sports facilities through improving quality and management of sites

### AIM 3

To **provide** new outdoor sports facilities where there is current or future demand to do so

Figure 1: Sport England Planning for Sport objectives





## PART 3: SPORT SPECIFIC ISSUES SCENARIOS AND RECOMMENDATIONS

In order to help develop the recommendations/actions and to understand their potential impact a number of relevant scenario questions are tested against the key issues in this section for the playing pitch sports resulting in the sport specific recommendations.

The quality of pitches in Gloucester City has been assessed via a combination of non-technical assessments (as determined by the National Governing Bodies) and user consultation to reach and apply an agreed rating. Further detail regarding pitch quality and non-technical assessments can be found with the sport specific sections of the Assessment Report.

With regard to the survey information, it is important to note that they represent a snapshot in time. Assessment data supporting the Strategy was collated within the relevant 2014/2015 sport season.

### Football pitches

#### **Key issues - grass**

- ◀ Most football pitches available for community use are assessed as being of poor quality (56%) with less than third as standard quality (29%) and 15 assessed as good.
- ◀ There are 20 pitches overplayed across eleven sites, by a total of 29 match equivalent sessions.
- ◀ Plock court has an insufficient number of changing rooms to adequately service all pitches/sports.
- ◀ Three teams report unmet demand and having to turn away players they cannot accommodate; Quedgeley Wanderers FC, Tuffley Rovers FC and Longlevens FC.
- ◀ Tuffley Rovers FC has unsecured tenure of its home site at British Gas Sports Field but has recently been awarded Sport England Protecting Playing Fields funding towards negotiating purchase of the land.
- ◀ There is a total of 15 match equivalent sessions of actual spare capacity across the City, of which nine are on adult pitches. There is a further 11 match equivalent sessions available on pitches which currently have no recorded play.
- ◀ There is a shortfall of match sessions at adult (9), youth 11v11 (6.5) and mini 7v7 (1) formats to accommodate current demand, whilst increases in future demand would cause a shortfall at all formats.
- ◀ Clubs report a lack of access to affordable floodlit training facilities, particularly AGPs of which there are no 3G pitches.

#### **Scenarios - grass**

- ◀ **Improving pitch quality** - on overplayed pitches (either through increased maintenance or drainage improvements in order to increase pitch capacity) to either standard or good quality will help to accommodate overplay expressed.
- ◀ However, given the cost of doing such work for all poor and standard quality pitches the continued maintenance required (and associated costs) alternatives need to be considered that can offer a more sustainable model for the future of football. The alternative to grass pitches is the use of AGPs for competitive matches and this is something that the FA is supporting, particularly for mini football.
- ◀ All of the eleven overplayed sites have poor (nine) or standard (two) quality pitches. If the pitches at these sites were improved to good quality (therefore increasing the capacity) it would address overplay on 16 of 20 pitches and create eight match sessions of spare capacity on adult pitches and thus further reducing future shortfalls to 9.5 adult match sessions.

## GLOUCESTER PLAYING PITCH STRATEGY

---

- ◀ There would be an additional 6.5 sessions available on youth 9v9 pitches, creating spare capacity of four available sessions, whilst an extra two sessions available on mini 7v7 pitches would reduce future shortfalls to just one match session.
- ◀ Increasing the quality of Beaufort Community School (youth 11v11), Gloucester Academy and Heron Park will not address overplay, however, reducing current use and transferring play to sites with spare capacity will address overplay (one adult match session and 2.5 youth 11v11 match sessions).
- ◀ Further to this, increasing the quality of other sites which currently have spare capacity from poor quality to good will further increase capacity to meet shortfalls identified. For example, improving adult pitches at Plock Court, Kingsway Sports Field and Kingsway Manor Farm would provide an additional 12 match sessions of spare capacity which would accommodate current shortfalls on adult pitches and would help reduce the future shortfall.
- ◀ **Utilising spare capacity** - Three adult pitches each express 0.5 match equivalent sessions of spare capacity in the peak period which if retained could help to sustain/improve quality.
- ◀ This leaves 21.5 match sessions as actual spare capacity on adult pitches and is enough to cater for a future shortfall in youth match sessions (20.5).
- ◀ Opening up sites which are currently unavailable for community use i.e. school sites or increased activity at sites currently unused will accommodate future demand for mini pitches and unmet demand expressed by some clubs.
- ◀ **Accommodating unmet demand** – were Tuffley Rovers FC to create a further three mini 5v5 teams (based on 10 players per squad) at Randwick Park, the mini 7v7 pitch currently used has spare capacity but not at peak time. Therefore there is a requirement for an additional specific mini 5v5 pitch at Randwick Park. Improving pitch quality from poor to at least standard at Longlevens Recreation Ground would both eliminate overplay and create 0.5 match sessions at peak time to field a fifth adult team.
- ◀ **Summary** – if pitch quality/overplay is addressed and access to existing pitches is maximised there would be no requirement for new grass pitches to be sought in Gloucester.

### **Recommendations – grass**

- ◀ In a phased approach, look to transfer 25% of youth football (mini and 9v9) onto 3G for match play and establish a mix of 3G use and grass pitch in order to better achieve sustainability.
- ◀ Where pitches are overplayed and assessed as standard or poor quality, prioritise investment and review maintenance regimes to ensure it is of an appropriate standard to sustain/improve pitch quality.
- ◀ Further investigate provision of joint sport maintenance equipment bank/s to better service the needs of clubs.
- ◀ Seek to develop Hub sites to service North and South of the City and explore options for Hub sites to cross subsidise grass pitches improvement across the City, for example at Plock Court.
- ◀ Where appropriate reduce usage on overplayed sites and transfer play to local sites which have spare capacity.
- ◀ Work with schools where possible to maximise and secure access to pitches on school sites which are currently unavailable for community use.
- ◀ Small amounts of existing spare capacity to be retained to help protect/improve pitch quality.  
Where appropriate, develop partnership and/or lease arrangements with large, sustainable, development-minded clubs to manage their own 'home' sites thus facilitating club development.

# GLOUCESTER

## PLAYING PITCH STRATEGY

---

### **Key issues – 3G**

- ◀ The FA model suggests that there is a current shortfall of three full size 3G pitches to meet demand for football training. There are a number of proposals regarding the creation of new 3G pitches or conversion of existing sand based surfaces.
- ◀ There is also a growing demand for all age groups to play on 3G pitches, particularly at youth level but in this instance also at adult level where there is the greatest shortfall of grass pitches.
- ◀ From 2014/15 only 3G pitches with a valid performance test and listed on the FA Register can be used for competitive play. At present, there are no 3G pitches located within Gloucester and therefore no AGPs have undergone the FA's performance test to allow league competitive football to be played. Please note this is the responsibility of the pitch provider and has an associated cost of £1,500.
- ◀ Gloucester Centurions American Football Club reports demand to play and train on a 3G pitch where it could be based. It states that because the dimensions of American football pitches are slightly larger, finding a suitably sized pitch of any nature is difficult.

### **Scenarios – 3G<sup>2</sup>**

- ◀ There are currently 44 mini teams playing within Gloucester. In order to accommodate all teams, four 3G pitches would be required.
- ◀ There are currently 23 youth 9v9 teams playing within Gloucester. In order to accommodate all teams and, therefore, 12.5 match equivalent sessions, three 3G pitches would be required.
- ◀ There are currently 45 youth 11v11 teams playing within Gloucester. In order to accommodate all teams and, therefore, 22.5 match equivalent sessions, eight 3G pitches would be required.
- ◀ There are currently 20 adult teams playing on Sunday in Gloucester. In order to accommodate all teams playing on this day, five 3G pitches would be required.

### **Recommendations – 3G**

- ◀ Increase provision of 3G pitches in the City (current shortfall of up to three full size).
- ◀ Develop a 3G Pitch Strategy for the City which takes into consideration current proposals and optimal strategic location to effectively service all areas of the City.
- ◀ In partnership with EH look to convert one sandbased AGP to a 3G surface whilst maintaining adequate provision to accommodate hockey demand.
- ◀ Retain some use of sand AGPs for football training in order to ensure continued sustainability of existing provision.
- ◀ Engage with Gloucester Centurions American Football Club to further assess and seek to options to accommodate the Club on new 3G pitch provision in the future.
- ◀ In a phased approach, look to transfer 25% of youth football (mini and 9v9) onto 3G for match play and establish a mix of 3G use and grass pitch in order to better achieve sustainability.
- ◀ Ensure that new 3G pitches are tested and subsequently FA registered. In addition, ensure that future 3G pitches are used to maximum potential to allow for future back to back programming of mini/youth matches at peak times.
- ◀ Ensure that sinking funds (formed by periodically setting aside money over time ready for surface replacement when required) are in place to maintain 3G pitch quality in the long term.

---

<sup>2</sup> Please refer to Appendix 3 for the full football scenario of programming 3G pitches for competitive play.

# GLOUCESTER PLAYING PITCH STRATEGY

---

## Cricket pitches

### Key issues

- ◀ Three squares are considered good quality and 10 standard quality with one poor quality square at Hucclecote Playing Field (managed by Harlequins Cricket Club on Council land). Clubs generally report the condition of squares as adequate but highlight issues with outfield areas being poor quality.
- ◀ There has been a reduction in the number of cricket pitches as a reflection of the decline in demand for cricket over the past decade albeit pitch quality has also affected usage.
- ◀ Only Gloucester Winget CC has secure tenure of its home site, whereas all other clubs rent school or Council pitches. This may explain the previously nomadic nature of clubs and limits potential for development and access to grant funding.
- ◀ Plock Court is underused and King George V is used only on a Saturday but is booked up throughout the 2015 season.
- ◀ Crypt School is overplayed by a total of 25 match sessions per season. The pitch only contains five grass wickets and with school fixtures and community use by AIW CC it is deemed to be overplayed.
- ◀ Of those sites with existing community use, there are five which show potential spare capacity on grass wickets in Gloucester.
- ◀ Overall there is sufficient capacity within Gloucester to accommodate current and future demand on existing squares, however; there is a lack of access to high quality playing and ancillary facilities.
- ◀ It is likely that provision of new good quality pitches in Gloucester would increase demand to play cricket.

### Scenarios

- ◀ **Addressing overplay** - all overplay is located at Crypt School where there are only five wickets to accommodate a relatively large number of school teams as well as community use. Addition of further wickets to the square would help to reduce the level of overplay should the outfield area be large enough to accommodate them. Alternatively, use of an additional square would also help to reduce the level of overplay on the school square.
- ◀ **Improving quality** - there is a lack of good quality cricket provision, both playing surfaces and ancillary facilities, in Gloucester. Improvements to the quality and/or quantity of cricket pitches to address this is likely to both increase the quality of match play and practice and meet likely unmet demand.

### Recommendations

- ◀ Work with clubs to review quality issues on those pitches assessed as standard and poor quality, including outfield areas which are of lesser quality in relation to the square at some sites.
- ◀ Address overplay where possible through increasing the number of wickets on squares or seeking access to additional provision.
- ◀ Establish security of tenure where viable and there is currently no written agreement in place, particularly at school sites or those sub-let through other providers.
- ◀ Explore potential to restore the squares previously marked at Plock Court (to good quality) if required in addition to the retained square which is currently unused to help meet any growth or potential increases in demand.
- ◀ Work with clubs to ensure appropriate access to and quality of ancillary facilities supports provision of pitches/sites.
- ◀ Utilise spare capacity at club sites to accommodate possible future demand for

# GLOUCESTER PLAYING PITCH STRATEGY

---

---

informal formats of cricket and junior/women/girls development.

## Rugby union pitches

### **Key issues**

- ◀ There are four standard quality pitches at Archdeacon Meadow; otherwise all other pitches within the City are assessed as poor quality.
- ◀ One site is currently available for community use but unused at Saintbridge Recreation Ground. In addition, the Lannett, which was previously unused, has recently been transferred over to football pitches.
- ◀ Clubs typically train on match pitches where there is full or partial floodlighting. The nearest World Rugby compliant AGP is at Hartpury College which clubs make ad hoc use of when required.
- ◀ Fourteen sites currently used by community clubs in some capacity are overplayed by a total of 53.75 match equivalent sessions per week, all of which are senior pitches.
- ◀ Overplay is generally due to excessive training use of pitches, sustained weekly junior use and limited capacity on pitches due to poor quality.
- ◀ There is spare capacity of five match equivalent sessions across six sites with senior rugby union pitches at senior peak time and seven sessions available at junior peak time. There are two match sessions available on mini pitches.
- ◀ Overall there are insufficient pitches in Gloucester to service current and future demand, totalling a future requirement for a further 51.25 and 4.75 match equivalent sessions on senior and mini pitches respectively.
- ◀ University of Gloucestershire and Aspire Trust plans for the development of Bishop's College include at least one new AGP suitable for rugby union/league training and match play.

### **Scenarios**

- ◀ **Improving pitch quality** - significant improvements are required to the maintenance programme at all sites where all but one (Archdeacon Meadow) score an M0 rating (poor maintenance). Where sites are currently assessed as poor, if maintenance was increased to good this would increase capacity by 55.5 match sessions per week on senior pitches available for community use across Gloucester.
- ◀ **Moving training off match pitches**<sup>3</sup> – there is currently 26.25 match sessions of training on match pitches in Gloucester across nine sites which contribute significantly to pitches being overplayed.
- ◀ Current shortfalls can be dealt with through a mixture of improving pitch quality and providing access to more floodlit pitches to accommodate training.

### **Recommendations**

- ◀ Work with clubs to review quality issues on those pitches assessed as standard and poor quality in order to help reduce overplay.
- ◀ Work to reduce training on match pitches through access to dedicated floodlit training areas, including options to provide full size 3G pitches in partnership with the FA which are World Rugby compliant to help address shortfalls.

---

<sup>3</sup> Please refer to Appendix Two for the full rugby scenario relating to training.

# GLOUCESTER PLAYING PITCH STRATEGY

---

## Rugby league pitches

### **Key issues**

- ◀ There are no pitches specifically marked for rugby league in Gloucester City and teams play on rugby union pitches.
- ◀ Only Gloucestershire Warriors RLFC plays within the City. Both All Golds RLFC and the University export demand to Cheltenham where teams play at the Prince of Wales Stadium.
- ◀ Rugby league interest and participation is likely to increase in the future. Gloucester Warriors RLFC has added an infrequent second team and the University has plans to significantly increase the number of students.
- ◀ There is great potential for crossover of players between both codes of rugby given the popularity of rugby union in Gloucester City.
- ◀ Despite the lack of a specific rugby league pitch, Gloucester is currently adequately served for pitches for rugby league use. Given the cross code transfer of players and the number of fixtures each season, continued play on rugby union pitches with vigilant management of usage is suitable.

### **Scenarios**

- ◀ **Marking of a specific rugby league pitch** – this would only be used in the summer rather than all year round, protecting quality and reducing the current sustained use through both rugby league and rugby union seasons.
- ◀ **Use of 3G pitches** – use of any potential new AGP (which is RFL Community Standard) to accommodate match play would allow the dual code pitch currently in use time for remedial work throughout the summer, whilst it would also enable University of Gloucestershire BUCS teams to play within Gloucester rather than in Cheltenham.
- ◀ There is sufficient provision on rugby union pitches to accommodate current rugby league demand in the City which is at present limited to a lower standard of play. Any increase in demand at community club level may present a case for access to more specific rugby league pitches.

### **Recommendations**

- ◀ Ensure that rugby league continues to be accommodated and provided for in Gloucester.
- ◀ Explore opportunities to provide a full size 3G pitch in partnership with the RFU/FA which is RFL Community Standard compliant to address displaced demand.
- ◀ Reassess demand in three years time in order to identify if demand has increase to warrant the need for dedicated rugby league pitches to be provided in Gloucester.



# GLOUCESTER

## PLAYING PITCH STRATEGY

---

### Hockey pitches (AGPs)<sup>4</sup>

#### **Key issues**

- ◀ There are four AGPs suitable for competitive hockey within Gloucester City, of which, there are two sand filled and two sand dressed surfaces. However, only three are currently used for hockey with Severn Vale School being used for football only.
- ◀ Although all four AGPs are assessed as standard quality, some are better in relation to others. Oxstalls Sports Park achieved the highest score (78%) whilst St Peter's Roman Catholic High School and Severn Vale School scored the joint lowest (56%) of the four pitches.
- ◀ With the exception of Oxstalls Sports Park, which was resurfaced in 2012, the other three pitches are in excess of ten years old and may require future surface replacement.
- ◀ Plock court has an insufficient number of changing rooms to adequately service all pitches/sports.
- ◀ There are three clubs using AGPs in the area. Gloucester City HC is the largest club based in the City, whilst both Cleevillians HC and Painswick HC import demand due to a lack of facilities in their local communities.
- ◀ Gloucester City HC is the largest club in the City. Membership is growing and the Club plans to add a fifth men's senior team and to double junior participation.
- ◀ The Club reports that it struggles for additional available pitch capacity at Oxstalls Sports Park and believes that with continued growth it will be limited by a lack of available pitch capacity at appropriate times for juniors.
- ◀ Cleevillians HC trains outside of the City in Innsworth. The Club would like to train at Oxstalls Sports Park if possible.
- ◀ In addition, there are two lacrosse teams in the City fielded by the University of Gloucestershire which has one men's and one women's team. Matches are played on Wednesday afternoons in the BUCS leagues on the AGP at Oxstalls Campus.
- ◀ Overall Gloucester is adequately provided for with regards to AGPs suitable for hockey matches at present. However, access to pitches for hockey training is a key issue as all AGPs are operating at capacity midweek primarily due to football training.
- ◀ The absence of 3G pitch provision in Gloucester plays a large part in the midweek capacity issues of hockey suitable AGPs as many are used for football and rugby union training.
- ◀ University of Gloucestershire has plans for the development of its Oxstalls Campus which will include the likely loss of the sand based AGP although there will be a replacement of a 3G pitch/s at Plock Court.

#### **Scenarios**

- ◀ **Current demand** - At peak time for match play (Saturday) there is a current requirement for five match sessions to accommodate all teams from Gloucester based clubs and one match session by Painswick HC. Based on playing matches on a Saturday, home and away and taking into consideration programming constraints and training needs this equates to the need for three full size sand AGPs to service the City.
- ◀ **Future demand** – Gloucester City HC has plans to add one more senior team playing on Saturday and a number of junior teams playing Sundays. Should this happen, three AGPs would still accommodate this level of use.
- ◀ **Current and future demand** – there is a need for three full size hockey suitable AGPs to service current and future demand for competitive hockey in Gloucester (if programming is maximised).

---

<sup>4</sup> Competitive league hockey matches can only be played on sand based, sand dressed or water based pitches. Although 40mm 3G can be considered suitable for some recreational and school use this surface is not suitable for club matches.

## GLOUCESTER PLAYING PITCH STRATEGY

---

- ◀ If the AGP is lost at the University this will reduce provision in the City to three. This will create displacement of hockey teams which will need to be re accommodated. Loss of the pitch and displacement of University teams would need to be mitigated by an improvement in pitch quality and secured hockey access at an alternative site.
- ◀ **Accommodating training** – increasing provision of 3G pitches will provide additional capacity for sand AGPs to accommodate hockey training. The extent of this is currently unknown, though it is likely that Gloucester City HC will be able to accommodate all training and match play at the same site as desired.

### **Recommendations**

- ◀ Prioritise and retain three sand AGPs to accommodate current and future hockey demand and to ensure continued sustainability.
- ◀ Oxstalls Sports Park to be protected for long term hockey use.
- ◀ Ensure pitch quality is of a good standard and ensure that sinking funds are in place to maintain sand AGP pitch quality in the long term.
- ◀ Maximise use of existing sand AGPs to accommodate (as a priority) Gloucester clubs training and competitive demand through effective programming.
- ◀ Work with Gloucester City HC to help facilitate membership growth and ensure sufficient access to Oxstalls Sports Park.
- ◀ Work with stakeholders in potential new 3G pitch developments to fully determine capacity which may be made available through transfer of football demand.
- ◀ If the sand AGP ensure mitigation through an improvement in existing pitch quality and secured hockey access at an alternative site.
- ◀ If the sand AGP is lost at the University ensure mitigation through an improvement in existing pitch quality and secured hockey/lacrosse access at an alternative site.

### **Tennis courts (outdoor)**

#### **Key issues**

- ◀ There are 28 outdoor courts unavailable for community use, most of which are located at schools sites and are generally made unavailable due to lack of floodlighting, lack of staffing or security issues.
- ◀ A total of 12 courts (16%) are assessed as good quality and 27 courts (36%) assessed as average quality. The majority of courts (48%) are assessed as poor quality.
- ◀ There are six clubs based within Gloucester, though Dowty TC is also located outside of the authority nearby and is considered to accommodate demand from residents.
- ◀ St Peter's TC reports that the Club is limited by the lack of good quality courts at the school and has a high level of unmet demand.
- ◀ Oxstalls Sports Park is a key venue for tennis development in Gloucester City. The tennis programme provides coaching for both juniors and seniors and is also available for social play.
- ◀ Virgin Active Health Club is not widely available for community use but has a strong tennis focus and caters for a significant level of demand from residents.
- ◀ There are enough tennis courts in Gloucester to cater for demand and casual use, though there is not sufficient access to available good quality floodlit courts required for the development of tennis at some clubs.



## GLOUCESTER PLAYING PITCH STRATEGY

---

---

### **Recommendations**

- ◀ Improve court quality and seek investment to sites which are available for public/community use.
- ◀ Ensure clubs can access the appropriate standard of courts to allow LTA competitions to be played.
- ◀ Maximise use of school courts to ensure that future demand for courts can be met in Gloucester.

### **Bowling greens**

#### **Key issues**

- ◀ All greens in the City are assessed as good quality with the exception of the green at Gloucester Park which is standard quality.
- ◀ There are no Council operated bowling greens and the majority of sites are operated by clubs with lease agreements securing tenure. There is one education site, where one green is located at Sir Thomas Rich's School.
- ◀ There is a general perception that the quality and maintenance of privately/club owned and maintained greens are of a good standard. This is likely to be due to cost of upkeep or a lack of equipment and knowledge of maintenance.
- ◀ There are eight clubs using bowling greens in Gloucester City. Generally clubs in Gloucester City report that membership levels have remained static in the last three years
- ◀ Barnwood BC shows evidence of overplay at Barnwood Bowling Club. It is also likely that the green at Caer Glow Bowling Club is overplayed due to the additional usage from Co-Op BC which shares the site.
- ◀ Gloucester City is generally well served for bowling greens at present as the nature of play is club focused, most of which have security of tenure at home sites. The key issue facing bowls clubs is the national decrease in playing members and sports development factors rather than a lack of accessible facilities.

### **Recommendations**

- ◀ Ensure that quality of greens and appropriate maintenance is applied to sites which are considered to be being played to capacity and beyond.
- ◀ Address spare capacity and maximise the availability of bowling greens for pay and play in order to raise the profile of the game, increase levels of membership and the revenue generated by sites.
- ◀ Support clubs which plan to attract younger people through hosting events such as family days as well as establishing links with local primary schools.
- ◀ Where demand exists, ensuring that quality is sustained or improved.

## PART 4: STRATEGIC RECOMMENDATIONS

The recommendations for the Strategy have been developed via the combination of information gathered during consultation, site visits and analysis which culminated in the production of an assessment report, as well as key drivers identified for the Strategy.

Implementation must be considered in the context of financial implications and the need for some proposals to also meet planning considerations.

### AIM 1

To **protect** sports facilities for meeting current and future needs

#### Recommendations:

- a. Protect sports facilities where there is a need to do so through local planning policy.
- b. Secure tenure and access to sites for high quality, development minded clubs, through a range of solutions and partnership agreements.
- c. Maximise community use of outdoor sports facilities where there is a need to do so.

#### Recommendation a – Protect sports facilities where there is a need to do so through local planning policy

Based on the outcomes of the Playing Pitch Strategy enhance local planning policy and emphasise the requirements of the National Planning Policy Framework (NPPF paragraph 73) and highlight Sport England’s statutory consultee role on planning applications that affect playing field land.

NPPF paragraph 74 states that existing open space, sports and recreational buildings and land, including playing fields, should not be built on unless:

- ◀ An assessment has been undertaken which has clearly shown the open space, buildings or land to be surplus to requirements; or
- ◀ The loss resulting from the proposed development would be replaced by equivalent or better provision in terms of quantity and quality in a suitable location; or
- ◀ The development is for alternative sports and recreational provision, the needs for which clearly outweigh the loss.

Future local plan policy should seek to protect facilities and the scope to legally safeguard long term use of strategically important sites to the community such as the strategic sites and key centres should be considered. For example, through the Fields in Trust programme ([www.fieldsintrust.org](http://www.fieldsintrust.org)).

# GLOUCESTER PLAYING PITCH STRATEGY

---

## ***Gloucester emerging Local Plan***

The Local Plan for Gloucester will consist of two separate documents – the Joint Core Strategy (JCS) and Gloucester City Plan (GCP). The JCS is a partnership between Gloucester City Council, Cheltenham Borough Council and Tewkesbury Borough Council. It will address strategic level planning issues, including housing requirements, an overall development strategy including site allocations and a range of development management policies. Of particular relevance to the Playing Pitch Strategy is Policy SA1, which identified a number of strategic allocations, including some of the edge of Gloucester city, Policy INF5 ‘Social and Community Infrastructure’ and Policy INF4 ‘Green Infrastructure’.

At the time of writing (summer 2015) the JCS has been submitted to the Government and is currently being considered at the Examination in Public (EiP) and its policy provisions may therefore be subject to change. More information is available at [www.gct-jcs.org](http://www.gct-jcs.org).

Sitting underneath the JCS will be the Gloucester City Plan (GCP). This is in the early stages of preparation but will provide more localised site allocations and development management policies, including the approach to be taken to playing field provision in the city. More information is available at [www.gloucester.gov.uk/cityplan](http://www.gloucester.gov.uk/cityplan).

***Lapsed and disused*** – pitches that were formerly playing pitches but are no longer used for formal or informal sports use within the last five years (lapsed) or longer (disused).

It is important to understand that where a pitch is identified as being lapsed, underused or of poor quality this does not necessarily mean that the facility is surplus to requirements. Equally where proposed development is located within access of a high quality playing pitch, this does not necessarily mean that there is no need for further pitch provision or improvements to existing pitches. The Playing Pitch Strategy may, if appropriate, be used to inform a Development Management decision. However, all applications are assessed by the council on a case by case basis.

Sport England’s playing field policy only allows for development of lapsed or disused playing fields if a PPS shows a clear excess in the quantity of playing pitch provision at present and in the future across all sports, the site concerned has no special significance to sport and the development involves measures to address any deficiencies in terms of quality or accessibility identified by the PPS. Playing Pitch Strategy guidance similarly states that loss of such sites without appropriate replacement should not be considered except in very limited circumstances where the assessment has clearly shown:

1. That there is an excess of accessible provision with secured community use in the study area, and;
2. The particular provision at a site to be surplus to requirements identify any is not of special interest to sport.

Any planning applications as such would have to show that new playing field land was being created on a Strategic Site that represented at least equivalent replacement for the playing field(s) being lost. In addition, any loss of low value playing pitch sites should be identified through the emerging Local Plan.

For further information please refer to Sport England’s Playing Fields Policy - ‘A Sporting Future for the Playing Fields of England’ Policy Exception E4 which can be found at:

<http://www.sportengland.org/media/123579/policy-exception-4.pdf>

## GLOUCESTER PLAYING PITCH STRATEGY

---

In terms of mitigation it is important, where possible and appropriate for a particular sport, that this takes place in an area that is accessible to the playing field that is lost to avoid a scenario where a redundant playing field is lost in an area which has deficiencies and is replaced on the other side of the authority.

Furthermore any potential school sites which become redundant over the lifetime of the Strategy may offer potential for meeting community needs on a localised basis. Where schools are closed their playing fields may be dedicated to community use to help address any unmet community needs. Closed school playing fields should be considered in the first instance for becoming community playing fields for meeting the needs identified in the Strategy before being considered for other uses.

The following should be considered when assessing the suitability of conversion of former school playing fields for community use:

- ◀ Location and willingness of LA/club or other party to take on ownership/lease/maintenance
- ◀ Size
- ◀ Quality
- ◀ Physical accessibility
- ◀ History of community access
- ◀ Availability of ancillary facilities

### **Recommendation b – Secure tenure and access to sites for high quality, development minded clubs through a range of solutions and partnership agreements**

Local sports clubs should be supported by partners including the Council, NGBs and the County Sports Partnership (CSP) to achieve sustainability across a range of areas including management, membership, funding, facilities, volunteers and partnership working. For example, support club development and encourage clubs to develop evidence of business and sports development plans to generate an income through their facilities. All clubs could be encouraged to look at different management models such as registering as Community Amateur Sports Clubs (CASC)<sup>5</sup>. Clubs should also be encouraged to work with partners locally whether volunteer support agencies or linking with local businesses.

As well as improving the quality of well-used, local authority sites, there are a number of sites which have poor quality (or no) ancillary facilities. It is recommended that security of tenure should be granted to the clubs playing on these sites (minimum 25 years as recommended by Sport England and NGBs), though only where facilities are considered to be of an acceptable standard prior to such club committing to long term occupancy. This should be considered where possible so the clubs are in a position to apply for external funding to improve the ancillary facilities, whether solely in conjunction with the Council.

There are some sites in Gloucester where security of tenure for the club/user needs to be secured (on private or industrial playing fields for example). This also often refers to education sites where formal community use agreements are not in place. NGBs can often help to negotiate and engage with schools, particularly academies where the local authority may not have direct influence. For further information on this, please refer to Objective g.

---

<sup>5</sup> <http://www.cascinfo.co.uk/cascbenefits>

## GLOUCESTER PLAYING PITCH STRATEGY

In addition there are a number of examples in Gloucester where long term leases could be put into place for the continued use of a site. Each club should be required to meet service and/or strategic recommendations. However, an additional set of criteria should be considered, which takes into account the quality of the club, aligned to its long term development objectives and sustainability. Coney Hill RFC is one such club which is now a limited company and has aspirations to develop the site, having expressed interest in asset transfer or a longer term lease on the land.

In the context of the Comprehensive Spending Review, which announced public spending cuts, it is increasingly important for the Council to work with voluntary sector organisations in order that they may be able to take greater levels of ownership and support the wider development and maintenance of facilities.

To facilitate this, the Council should support and enable clubs to generate sufficient funds to allow this.

### *Recommended criteria for lease of sport sites to clubs/organisations*

<b>Club</b>	<b>Site</b>
<p>Clubs should have Clubmark/FA Charter Standard accreditation award.</p> <p>Clubs commit to meeting demonstrable local demand and show pro-active commitment to developing school-club links.</p> <p>Clubs are sustainable, both in a financial sense and via their internal management structures in relation to recruitment and retention policy for both players and volunteers.</p> <p>Ideally, clubs should have already identified (and received an agreement in principle) any match funding required for initial capital investment identified.</p> <p>Clubs have processes in place to ensure capacity to maintain sites to the existing, or better, standards.</p> <p>All info relating to clubs contained in a robust business plan that shows sustainability and growth.</p>	<p>Sites should be those identified as 'Club Sites' (recommendation d) for new clubs (i.e. not those with a City wide significance) but which offer development potential. For established clubs which have proven success in terms of self-management 'Key Centres' are also appropriate.</p> <p>As a priority, sites should acquire capital investment to improve (which can be attributed to the presence of a Clubmark/Charter Standard club).</p> <p>Sites should be leased with the intention that investment can be sourced to contribute towards improvement of the site.</p> <p>An NGB/Council representative should sit on a management committee for each site leased to a club.</p>

The Council can further recognise the value of Clubmark/Charter Standard by adopting a policy of prioritising the clubs that are to have access to these better quality facilities. This may be achieved by inviting clubs to apply for season long leases on a particular site as an initial trial.

The Council should establish a series of core outcomes to derive from clubs taking on a lease arrangement to ensure that the most appropriate clubs are assigned to sites. As an example outcomes may include:

- ◆ Increasing participation.
- ◆ Supporting the development of coaches and volunteers.
- ◆ Commitment to quality standards.
- ◆ Improvements (where required) to facilities, or as a minimum retaining existing standards.

## GLOUCESTER PLAYING PITCH STRATEGY

---

In addition, clubs should be made fully aware of the associated responsibilities/liabilities when considering leases of multi-use public playing fields.

### ***Community Asset Transfer***

The Council should continue to work towards adopting a policy which supports community management and ownership of assets to local clubs, community groups and trusts. This presents sports clubs and national governing bodies with opportunities to take ownership of their own facilities; it may also provide non-asset owning sports clubs with their first chance to take on a building. Active Gloucestershire is able to support these clubs towards asset transfer, including developing a greater business focus and participation schemes in order to ensure sustainability.

The Sport England Community Sport Asset Transfer Toolkit is a bespoke, interactive web based tool that provides a step by step guide through each stage of the asset transfer process: [http://www.sportengland.org/support\\_\\_advice/asset\\_transfer.aspx](http://www.sportengland.org/support__advice/asset_transfer.aspx)

### **Recommendation c – Maximise community use of outdoor sports facilities where there is a need to do so**

#### ***Education sites***

In order to maximise community use of educational facilities it is recommended to establish a more coherent, structured relationship with schools. The ability to access good facilities within the local community is vital to any sports organisation, yet many clubs struggle to find good quality places to play and train.

A large number of sporting facilities are located on education sites and making these available to sports clubs can offer significant benefits to both the school/college and the local clubs. The Council and other key partners must work with schools and colleges to develop an understanding of the issues that restrict or affect community access. Community use of school pitches is often restricted by basic maintenance regimes which limit pitch capacity combined with typically high levels of school use throughout the week, therefore in practice pitches may not be of suitable quality to sustain further use. Support should be provided, where appropriate, to address underlying problems. Consideration should be given to a centralised booking system for community use of schools and colleges to minimise administration and make access easier for the users.

It is not uncommon for school pitch stock not to be fully maximised for community use. Even on established community use sites, access to grass pitches for community use is limited. The Assessment Report identified several issues relating to the use of school facilities:

- ◀ Many sites are underutilised, especially for competitive play for football.
- ◀ Community use is limited and often based on informal agreements between individual schools and clubs.
- ◀ There is no strategic guidance as to which clubs are allocated the use of playing pitch facilities (i.e. in accordance with a strategic need).
- ◀ There are a number of school sites where a community use agreement is in place but it is not clear whether the agreement is being upheld.
- ◀ There are management issues inherent in developing, implementing and managing community use agreements. Advice and guidance can be obtained from Sport England's Schools toolkit and Sports organisations toolkit.  
[www.sportengland.org/facilities-planning](http://www.sportengland.org/facilities-planning)



## GLOUCESTER PLAYING PITCH STRATEGY

---

Where appropriate, it will be important for schools to negotiate and sign formal and long-term agreements that secure community use. This need to be examined against these issues:

- ◀ The analysis provides a clear indication of the future pitch requirements and provides a basis for partners to negotiate.
- ◀ Community use should not impact on the needs of schools to deliver curricular and extracurricular activities

Sport England has also produced guidance, online resources and toolkits to help open up and retain school sites for community use and can be found at:

<http://www.sportengland.org/facilities-planning/accessing-schools/>

It is recommended that a working group, led by a partner from the education sector but supported by a range of other sectors including sport and leisure is established to implement the strategic direction in relation to the increased/better use of school facilities. Broadly speaking, its role should be to:

- ◀ To better understand current community use, practices and issues by 'auditing' schools.
- ◀ Ensure community use agreements are upheld
- ◀ Identify and pilot one school/club formal community use agreement with a view to rolling out the model across the area.
- ◀ Ensure that funding to improve the quality of the facilities is identified and secured.
- ◀ As part of any agreement secure a management arrangement for community access, which does not rely on existing school staff structures.
- ◀ Ensure that pitch provision at schools is sufficient in quality and quantity to be able to deliver its curriculum. Once this has been achieved provision could contribute to overcoming deficiencies in the area.

Although there are a growing number of academies and college sites in Gloucester, which the Council has no control over the running of, it is still important to understand the significance of such sites and attempt to work with the schools where there are opportunities for community use. In addition, the relevant NGB has a role to play in supporting the Council to deliver the strategy and communicating with schools where necessary to address shortfalls in provision, particularly for football pitches.

## **AIM 2**

To **enhance** outdoor sports facilities through improving quality and management of sites

### **Recommendation:**

- d. Improve quality
- e. Adopt a tiered approach (hierarchy of provision) for the management and improvement of sites.
- f. Work in partnership with stakeholders to secure funding

### **Recommendation d – Improve quality**

There are a number of ways in which it is possible to increase pitch quality, including for example, addressing overplay and improving maintenance. These are explored in more detail below.

#### ***Addressing quality issues***

Generally where pitches are assessed as standard or poor quality and/or overplayed, review/improve maintenance regimes to ensure it is of an appropriate standard to sustain/improve pitch quality. Ensuring existing maintenance of good quality pitches continues is also important.

Based on an achievable target using existing quality scoring to provide a baseline, a standard should be used to identify deficiencies and investment should be focused on those sites which fail to meet the proposed quality standard (using the site audit database, provided in electronic format). The Strategy approach to these outdoor sports facilities achieving these standards should be to enhance quality and therefore the planning system should seek to protect them.

For the purposes of the Quality Assessments, this Strategy will refer to pitches and ancillary facilities separately as Good, Standard or Poor quality. In Gloucester, for example, some good quality sites have poor quality elements i.e. changing rooms or a specific pitch.

Good quality refers to pitches that have, for example, a good maintenance regime coupled with good grass cover, an even surface, are free from vandalism, litter etc. In terms of ancillary facilities, good quality refers to access for disabled people, sufficient provision for referees, juniors/women/girls and appropriate provision of showers, toilets and car parking. For rugby union, a good pitch is also pipe and/or slit drained.

Standard quality refers to pitches that have, for example, an adequate maintenance regime coupled with adequate grass cover, minimal signs of wear and tear, goalposts may be secure but in need of minor repair. In terms of ancillary facilities, standard quality refers to adequately sized changing rooms, storage provision and provision of toilets. For rugby union, drainage is natural and adequate.

Poor quality refers to pitches that have, for example, poor levels of maintenance coupled with inadequate grass cover, uneven surface and damage. In terms of ancillary facilities,



## GLOUCESTER PLAYING PITCH STRATEGY

poor quality refers to inappropriate size of changing rooms, no showers, no running water and old dated interior. For rugby union, drainage is natural and inadequate. Please refer to the Sport England/NGB quality assessments. Sites played beyond capacity may require remedial action to help reduce this.

For improvement/replacement of AGPs refer to Sport England and the NGBs 'Selecting the Right Artificial Surface for Hockey, Football, Rugby League and Rugby Union' document for a guide as to suitable AGP surfaces:

[www.sportengland.org/facilities-planning/tools-guidance/design-and-cost-guidance/artificial-sports-surfaces/](http://www.sportengland.org/facilities-planning/tools-guidance/design-and-cost-guidance/artificial-sports-surfaces/)

Also, see 'The FA Guide to 3G Football Turf Pitch Design Principles and Layout':

[www.replaymaintenance.co.uk/downloads/ftp-tech-guide.pdf](http://www.replaymaintenance.co.uk/downloads/ftp-tech-guide.pdf)

### **Addressing overplay**

In order to improve the overall quality of the playing pitches stock; it is necessary to ensure that pitches are not overplayed beyond recommended weekly carrying capacity. This is determined by assessing pitch quality (via a non-technical site assessment) and allocating a weekly match limit to each. Each NGB recommends a number of matches that a good quality pitch should take:

Sport	Pitch type	No. of matches		
		Good quality	Standard quality	Poor quality
Football	Adult pitches	3 per week	2 per week	1 per week
	Youth pitches	4 per week	2 per week	1 per week
	Mini pitches	6 per week	4 per week	2 per week
Rugby union*	Natural Inadequate (D0)	2 per week	1.5 per week	0.5 per week
	Natural Adequate (D1)	3 per week	2 per week	1.5 per week
	Pipe Drained (D2)	3.25 per week	2.5 per week	1.75 per week
	Pipe and Slit Drained (D3)	3.5 per week	3 per week	2 per week
Rugby league	Senior	3 per week	2 per week	1 per week
Cricket	One grass wicket	5 per season	N/A	N/A
	One synthetic wicket	60 per season		

\* Please note that the RFU believes that it is most appropriate to base the calculation of pitch capacity upon an assessment of the drainage system and maintenance programme afforded to a site.

There are also a number of sites that are poor quality but are not overplayed. These sites should not be overlooked as often poor quality sites have less demand than other sites but demand could increase if the quality was to increase. Improving pitch quality should not be considered in isolation from maintenance regimes.

Whilst it works both ways in so much as poor pitch condition is a symptom of pitches being over played, potential improvements may make sites more attractive and therefore more popular.

## GLOUCESTER PLAYING PITCH STRATEGY

---

There is also a need to balance pitch improvements alongside the transfer of play to alternative pitch sites. Therefore, work with clubs to ensure that sites are not played beyond their capacity and encourage play, where possible, to be transferred to alternative venues which are not operating at capacity.

### ***Increasing pitch maintenance***

Standard or poor grass pitch quality may not just be a result of poor drainage. In some instances ensuring there is an appropriate maintenance for the level/standard of play can help to improve quality and therefore increase pitch capacity. Each NGB can provide assistance with reviewing pitch maintenance regimes.

*It is recommended that NGBs work together to seek opportunities at club sites to establish maintenance equipment banks which can be shared between local clubs. This could also extend to the sharing of good practice and expertise. Further work should be carried out to form a City wide maintenance approach which determines and addresses the most effective method of increasing the quality and regularity of pitch maintenance across all grass pitch sports.*

For example, the FA and ECB have together recently introduced a Pitch Advisor Scheme in partnership with Institute of Groundsmanship (IOG) to develop a Grass Pitch Maintenance service that can be utilised by grassroots football clubs with the simple aim of improving the quality of grass pitches. The key principles behind the service are to provide football clubs with advice/practical solutions on a number of areas, with the simple aim of improving the club's playing surface.

In relation to cricket, maintaining high pitch quality is the most important aspect of cricket. If the wicket is poor, it can affect the quality of the game and can, in some instances, become dangerous. The ECB recommends full technical assessments of wickets and pitches available through a Performance Quality Standard Assessment (PQS). The PQS assesses a cricket square to ascertain whether the pitch meets the Performance Quality Standards that are benchmarked by the Institute of Groundsmanship. Please note that PQS assessments are also available for other sports.

### **Recommendation e – Adopt a tiered hierarchy of provision to help prioritise investment and improvement of sites**

To allow for facility developments to be programmed within a phased approach a tiered approach to the investment and improvement of playing pitch sites and associated facilities should be used. Please refer to Part 5: Action Plan for the proposed hierarchy.

### **Recommendation f – Work in partnership with stakeholders to secure funding**

Partners, led by the Council, should ensure that appropriate funding secured for improved sports provision is directed to areas of need, underpinned by a robust strategy for improvement in playing pitch facilities.

In order to address the community's needs, to target priority areas and to reduce duplication of provision, there should be a coordinated approach to strategic investment. In delivering this recommendation the Council should maintain a regular dialogue with local partners and through the Playing Pitch Steering Group.

## **GLOUCESTER PLAYING PITCH STRATEGY**

---

Some investment in new provision will not be made by the Council directly, it is important however, that the Council therefore seeks to direct and lead a strategic and co-ordinated approach to facility development by education sites, NGBs, sports clubs and the commercial sector to address community needs whilst avoiding duplication of provision.

Please refer to Appendix Two for further funding information which includes details of the current opportunities, likely funding requirements and indicative project costs.

Sport and physical activity can have a profound effect on peoples' lives, and plays a crucial role in improving community cohesion, educational attainment and self-confidence. However, one of sport's greatest contributions is its positive impact on public health. It is therefore important to lever in investment from other sectors such as health through Clinical Commissioning Groups (CCGs).

## AIM 3

To **provide** new outdoor sports facilities where there is current or future demand to do so

### Recommendations:

- g. Secure planning gain for playing pitches from housing growth
- h. Rectify quantitative shortfalls in the current pitch stock.
- i. Identify opportunities to add to the overall stock to accommodate both current and future demand.

### Recommendation g - Secure planning gain for playing pitches from housing growth

#### *Population/housing growth scenario*

The current resident population in Gloucester City is 124,562<sup>6</sup>. By 2031 (to reflect the Joint Core Strategy which shows how the area will develop during the period up to 2031) the City's population is projected to increase to 143,882<sup>7</sup> which is an increase of 19,320 (or equivalent to a percentage increase of 15.5%) according to ONS data. This level of future demand has already been factored into the calculation to identify shortfalls in provision.

It is important that the Council secures appropriate contributions from all new developments to provide for the sporting needs arising from the residents of that development, where appropriate.

As part of the Joint Core Strategy (JCS) four 'Strategic Allocations' that form urban extensions to Gloucester are proposed. The proposed number of new homes at each of these allocations is set out below:

Location	Number of new homes
A1 – Innsworth	1,250 new homes
A2 – North Churchdown	532 new homes
A3 – South Churchdown	868 new homes
A4 – North Brockworth	1,500 new homes

In addition, there is an urban extension to the south of the City (in Stroud District) at Hunt's Grove. Altogether, when taking into account the part of the site that already has planning, plus that to be allocated as part of the Stroud Local Plan, Hunt's Grove will provide 2,500 new homes and 20 hectares of employment land.

<sup>6</sup>Source: ONS Mid-2013 Population Estimates for Lower Layer Super Output Areas in England and Wales by Single Year of Age and Sex and ONS 2012-based projections 2012-2032. Released: 29 May 2014

<sup>7</sup> Source: ONS 2012-based projections 2012-2037. Released: 29 May 2014

## GLOUCESTER PLAYING PITCH STRATEGY

Using team generation rates from the PPS it is possible to estimate the level of provision likely to be generated from the development:

Location	Additional teams	Pitch requirement <sup>8</sup>
A1 – Innsworth	1 adult football 2 youth football 1 mini football 1 senior rugby 2 mini/midi rugby	1 adult football 1 youth 11v11 football 1 mini football 1 senior rugby union 1 mini/midi rugby
A2 – North Churchdown	1 adult football 1 youth football 1 mini football	1 adult football 1 youth 11v11 football 1 mini football
A3 – South Churchdown	1 adult football 1 youth football 1 mini football 1 senior rugby 1 mini/midi rugby	1 adult football 1 youth 11v11 football 1 mini football 1 senior rugby union 1 mini/midi rugby
A4 – North Brockworth	2 adult football 2 youth football 1 mini football 1 adult cricket 1 senior rugby 2 mini/midi rugby	1 adult football 1 youth 11v11 football 1 mini football 1 cricket 1 senior rugby union 1 mini/midi rugby

Refer to Appendix Four for the full scenario by Area.

NB the increase population in each development alone is not enough to generate hockey teams. However, ONS population increases across the City applied to TGRs suggest that one junior hockey team will be created and some increase in participation at an adult level but not enough to generate a full new team. It is important to note that housing projections are subject to change and that the projections above only reflect current estimations.

The exact nature and location of provision associated with these developments will be fully determined through the local planning process and in partnership with each specific NGB, which may for example include upgrading of facilities at existing sites where appropriate.

<sup>8</sup> Based on one team sharing a pitch and playing on a home and away basis

### **Recommendation h - Rectify quantitative shortfalls in the current pitch stock**

The Council and its partners should work to rectify identified inadequacies and meet identified shortfalls as outlined in the Assessment Report and the sport by sport specific recommendations.

It is important that the current levels of grass pitch provision are protected, maintained and enhanced to secure provision now and in the future. For most sports the future demand for provision identified in Gloucester can be overcome through maximising use of existing pitches through a combination of:

- ◀ Improving pitch quality in order to improve the capacity of pitches to accommodate more matches.
- ◀ The re-designation of pitches for which there is an oversupply.
- ◀ Securing long term community use at school sites.
- ◀ Working with commercial and private providers to increase usage.

While maximising the use of existing pitches offers scope to address the quantitative deficiencies for most sports, new or additional cricket squares on public or private fields, as well as improving existing wickets is required to meet the levels of demand identified for cricket both now and in the future.

There may be a requirement to protect some senior football pitches as this provides the flexibility to provide senior, junior or mini pitches (through different coloured line markings within the pitch). However, further work should be undertaken on this as an action for the Council/NGBs. Furthermore the re-designation of adult pitches that are not currently used may lead to a deficiency of adult pitches in the medium to longer term as younger players move up the ages. It is likely that for some sports, particularly football, that the provision of new pitches and facilities will be required in the future to support the predicted future demand.

Unmet demand, changes in sport participation and trends, and proposed housing growth should be recognised and factored into future facility planning. Assuming an increase in participation and housing growth occurs, it will impact on the future need for certain types of sports facilities. Sports development work also approximates unmet demand which cannot currently be quantified (i.e., it is not being suppressed by a lack of facilities) but is likely to occur. The following table highlights the main development trends in each sport and their likely impact on facilities. However, it is important to note that these may be subject to change.

Furthermore, retaining some spare capacity allows some pitches to be rested to protect overall pitch quality in the long term. Therefore, whilst in some instances it may be appropriate to re-designate a senior pitch where there is low demand identified a holistic approach should be taken to re-designation for the reasons cited. The site-by-site action planning will seek to provide further clarification on where re-designation is suitable.

# GLOUCESTER PLAYING PITCH STRATEGY

## Likely future sport-by-sport demand trends

Sport	Future development trend	Strategy impact
Football	The needs of the game will change significantly from the 2013/14 season with the implementation of the FA Youth Development Review. As a result, pitch demands will change. This could also see changes in the seasonal demand of pitches (youth football).	Consider re-allocating leases to Community Charter Standard clubs with a large number of teams. Work with clubs to identify facility development opportunities. Work with clubs in relation to their pitch demands as a result of the FA Youth Development Review.
	Demand for senior football is likely to be sustained based on current trends and the move to small sided football. County FA focus to maintain growth of youth football through to adults.	Sustain current stock but consideration given to reconfigure pitches if required.
	An increase in women and girls football following £2.4m investment over the next two years (2014-2016) from Sport England to increase the number of women and girls taking part in football sessions.	A need to provide segregated ancillary facilities and the potential need for more pitches.
Cricket	Demand is likely to increase if quality is improved. There are currently (2015) no informal formats of cricket operating in Gloucester.	Increase in peak time usage for good quality grass wickets at club sites. Likely increase in demand for non turf wickets if informal formats of cricket are established.
	Women's and girls' cricket is a national priority and there is a target to establish two girls' and one women's team in every local authority over the next five years.	Support clubs to ensure access to segregated changing and toilet provision and access to good quality cricket pitches to support growth.
Rugby union	The Rugby World Cup (2015) is predicted to see a further increase in the demand for rugby provision in Gloucester.	Clubs are likely to field more teams in the future, and therefore have a demand for more pitches. It is important, therefore, to work with the clubs to maintain the current pitch stock and to support facility development where appropriate.
Rugby league	RFL is working towards growing rugby league participation including through growth at junior clubs, Play Touch RL and 9 aside RL.	Review the need for dedicated rugby league pitches in the next three years. Seek 3G pitch venues for Play Touch and grass pitches for 9 aside.
AGPs	Demand for 3G pitches for competitive football will increase. It is likely that future demand for the use of 3G pitches to service competitive football, particularly mini and youth will result in some reduced demand for grass pitches. Provision of 3G pitches which are World Rugby compliant will help to reduce overplay as a result of training on rugby pitches.	Ensure that access to new AGP provision across the City is maximised and that community use agreements are in place. Utilise Sport England/NGB guidance on choosing the correct surface: <a href="http://www.sportengland.org/media/30651/Selecting-the-right-artificial-surface-Rev2-2010.pdf">http://www.sportengland.org/media/30651/Selecting-the-right-artificial-surface-Rev2-2010.pdf</a>

## GLOUCESTER PLAYING PITCH STRATEGY

Sport	Future development trend	Strategy impact
Bowls	The general trend of demand for bowling greens remains static and it is not thought likely that future demand will result in the need for new greens.	Current and future demand for bowling greens is being met by provision in Gloucester.
Tennis	It is likely that future demand for access to tennis courts in Gloucester will remain static.	Tennis courts in Gloucester can generally accommodate current demand and anticipated future demand. However, the poorer quality courts, especially parks courts, will require future investment in order to retain usage, even for recreational play. Increasing court capacity through floodlighting and/or increasing the quality of parks provision could build in future capacity to accommodate growth.

### **Recommendation i - Identify opportunities to add to the overall pitch stock to accommodate both current and future demand**

The Council should use, and regularly update, the Action Plan within this Strategy for improvements to its own pitches whilst recognising the need to support partners. The Action Plan lists improvements to be made to each site focused upon both qualitative and quantitative improvements as appropriate for each area.

Furthermore any potential school sites which become redundant over the lifetime of the Strategy may offer potential for meeting community needs on a localised basis. Where schools are closed their playing fields may be converted to dedicated community use to help address any unmet community needs.

Some sites in Gloucester may also have the potential to accommodate more pitches which may be a solution to meeting shortfalls identified.



# GLoucester PLAYING PITCH STRATEGY

---

## PART 5: ACTION PLAN

### Introduction

The site-by-site action plan list seeks to address key issues identified in the accompanying Assessment Report. It provides recommendations based on current levels of usage, quality and future demand, as well as the potential of each site for enhancement.

It should be reviewed in the light of staff and financial resources in order to prioritise support for strategically significant provision and provision that other providers are less likely to make. Recommendation e below explains the hierarchy of priorities on the list. It is imperative that action plans for priority projects should be developed through the implementation of the strategy.

The Council should make it a high priority to work with NGBs and other partners to comprise a priority list of actions based on local priorities, NGB priorities and available funding.

### **Recommendation e - Adopt a tiered hierarchy of provision to help prioritise investment and improvement of sites**

To allow for facility developments to be prioritised and programmed within a phased approach a tiered model to for the improvement of playing pitch sites and associated facilities is useful.

The identification of sites is based on their strategic importance in a City-wide context i.e. they accommodate the majority of demand or the recommended action has the greatest impact on addressing shortfalls identified either on a sport by sport basis or across the City as a whole.

#### *Gloucester's tiered site criteria*

Hub sites	Key centres	Local sites	Reserve sites
Strategically located. Priority sites for NGB.	Strategically located within the analysis area.	Serves the local community. Likely to include education sites.	Serves the local community.
Accommodates three or more good quality grass pitches. Including provision of at least one AGP.	Accommodates two or more good quality grass pitches.	Accommodates more than one pitch.	Likely to be single-pitch site.
Single or multi-sport provision. Could also operate as a central venue.	Single or multi-sport provision. Could also operate as a central venue.	Single or multi-sport provision.	Supports informal usage and/ or training etc.
Maintenance regime aligns with NGB guidelines.	Maintenance regime aligns with NGB guidelines.	Standard maintenance regime either by the club or in house maintenance contract.	Basic level of maintenance i.e. grass cutting and line marking as required.
Good quality ancillary facility on site, with sufficient changing rooms and car parking to serve the number of pitches.	Good quality ancillary facility on site, with sufficient changing rooms and car parking to serve the number of pitches.	Appropriate access changing to accommodate both senior and junior use concurrently (if required).	No requirement for access changing to accommodation.

# GLOUCESTER PLAYING PITCH STRATEGY

---

**Hub sites** are of City wide importance where users are willing to travel to access the range and high quality of facilities offered and are likely to be multi sport. These have been identified on the basis of high impact on addressing the issues identified in the assessment.

The financial, social and sporting benefits which can be achieved through development of strategic sites (also known as hub sites) are significant. Sport England provides further guidance on the development of community sports hubs at:

[http://www.sportengland.org/facilities\\_planning/planning\\_tools\\_and\\_guidance/sports\\_hubs.aspx](http://www.sportengland.org/facilities_planning/planning_tools_and_guidance/sports_hubs.aspx)

For hub sites, NGB financial modelling suggests that multi 3G pitch sites are more sustainable in the longer term. However, the only existing site which is likely to be able to accommodate a double 3G pitch site is Plock Court/ University of Gloucester.

**Key centres** although these sites are more community focused, some are still likely to service a wider analysis area (or slightly wider). However, there may be more of a focus on a specific sport i.e. a dedicated site.

It is considered that some financial investment will be necessary to improve the ancillary facilities at both Hub sites and Key Centres to complement the pitches in terms of access, flexibility (i.e. single-sex changing if necessary), quality and that they meet the rules and regulations of local competitions.

**Local sites** refer to those sites which are generally one and two pitch sites and may be Council owned hired to clubs for a season or are sites which have been leased on a long-term basis. However, they are also likely to be private club sites serving one particular sport.

The level of priority attached to them for Council-generated investment may be relatively low and consideration should be given, on a site-by-site basis, to the feasibility of a club taking a long-term lease on the site (if not already present), in order that external funding can be sought.

It is possible that sites could be included in this tier which are not currently hired or leased to a club, but have the potential to be leased to a suitable club. NGBs would expect the facility to be transferred in an adequate condition that the club can maintain. In the longer term, the Club should be in a position to source external funding to improve/extend the facilities.

**Reserve sites** could be used as overspill for neighbouring sites and/or for summer matches/competitions, training or informal play. They are most likely to be single-pitch sites with no ancillary facilities.

## Management and development

The following issues should be considered when undertaking sports related site development or enhancement:

- ◀ Financial viability.
- ◀ Security of tenure.
- ◀ Planning permission requirements and any foreseen difficulties in securing permission.
- ◀ Adequacy of existing finances to maintain existing sites.
- ◀ Business Plan/Masterplan – including financial package for creation of new provision where need has been identified.

# GLOUCESTER PLAYING PITCH STRATEGY

---

- ◀ Analysis of the possibility of shared site management opportunities.
- ◀ The availability of opportunities to lease sites to external organisations.
- ◀ Options to assist community groups to gain funding to enhance existing provision.
- ◀ Negotiation with landowners to increase access to private strategic sites.
- ◀ Availability of funding for hub site development.
- ◀ Impact on all sports that use a site regardless of the sport that is the subject of enhancements.

## **Action plan**

### **Partners**

The column indicating Partners refers to the main organisation that the Council will liaise with in helping to deliver the actions. The next stage in the development of the action plan will be to agree a Lead Partner to help deliver the actions.

### **Priority level**

In addition to determining where the site sits within the tiered hierarchy of provision, the level of priority should be determined. For example, a Hub Site is likely to have a high priority attached unless for example it is already established and therefore may have a low priority. A local private cricket or rugby club could have anything from high priority to low priority attached to it depending on a number of factors such as NGB priority and the impact the recommendation will have on addressing shortfalls/issues identified.

**High** priority sites have City wide importance and have been identified on the basis of the impact that the site will have on addressing the key issues identified in the assessment.

**Medium** priority and have analysis area importance and have been identified on the basis of the impact that the site will have on addressing the issues identified in the assessment.

**Low** priority sites have been identified on a site by site basis as issues appertaining to individual sites but that may also contribute to addressing the issues identified in the assessment.

### **Costs**

The strategic actions have also been ranked as low, medium or high based on cost. The brackets in which these sit are:

(L) -Low - less than £50k; (M) -Medium - £50k-£250k; (H) -High £250k and above. These are based on Sport England's estimated facility costs which can be found at [www.sportengland.org/media/198443/facility-costs-4q13.pdf](http://www.sportengland.org/media/198443/facility-costs-4q13.pdf)

### **Timescales**

The action plan has been created to be delivered over a ten year period. The information within the Assessment Report, Strategy and Action Plan will require updating as developments occur. The timescales relate to delivery times and are not priority based.

**Timescales: (S) -Short (1-2 years); (M) - Medium (3-5 years); (L) - Long (6+ years).**

### **Aim**

## GLOUCESTER PLAYING PITCH STRATEGY

---

Each action seeks to meet at least one of the three aims of the Strategy; **Enhance, Provide, Protect.**

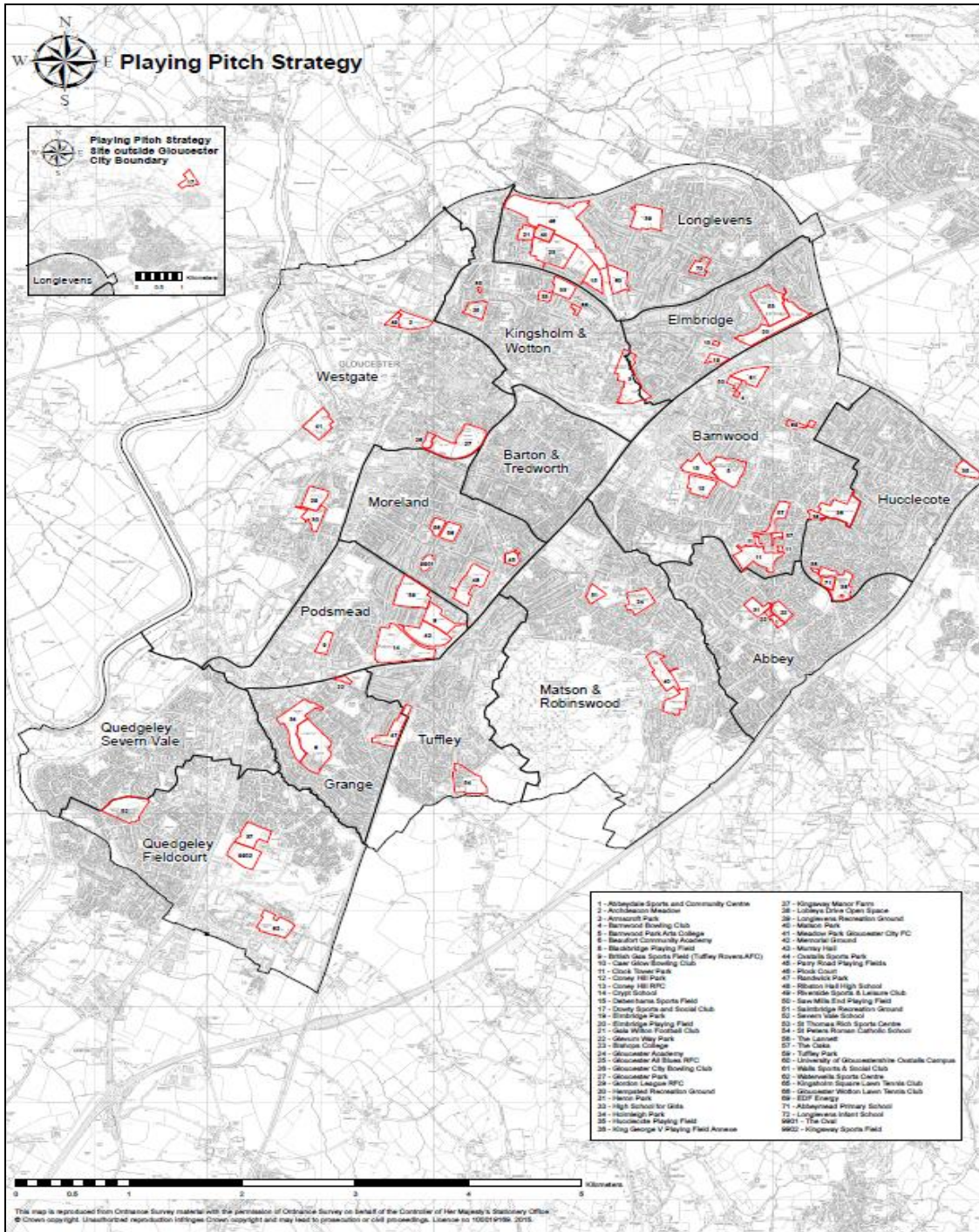
### **Site ID**

Please note that although allocated Site ID numbers most often run in chronological order there are instances where numbers are missing. This is due to where pitches/sites are now no longer used or have been removed due to duplication.

Please also refer to Appendix Six for sport by sport maps of provision which are taken from the Assessment Report.

*Figure 1: Site map*

# GLOUCESTER PLAYING PITCH STRATEGY





## GLOUCESTER PLAYING PITCH STRATEGY

Site ID	Site	Sport	Management	Current status	Recommended actions	Partners	Hierarchy tier (priority)	Timescales <sup>9</sup>	Cost <sup>10</sup>	Aim
1	Abbeydale Sports and Community Centre	AGP	Community	One standard quality small sized AGP used by all Abbeymead Rovers FC teams and Gloucestershire College for training.	Ensure sufficient access for club training whilst maximising usage at weekends and through commercial lets.	Club FA	Local (low)	L	-	Protect
2	Archdeacon Meadow	Cricket	School	Three standard quality squares with 10, eight and four wickets respectively. The King's School offsite sporting venue used solely for school sport and therefore unavailable for community use. Spare capacity of 80 matches.	Explore potential for future community use and ascertain current barriers to use. Continue to develop cricket within the school and maximise use through PE and school fixtures.	Council ECB	Local (low)	M	L	Protect Enhance
		Rugby union		Four standard quality pitches which are marked over the cricket outfield. Used heavily by the school for school matches on Saturday, midweek training and curricular PE. Site is subsequently overplayed by 1.5 match sessions per week.	In the short term look to transfer training use from match pitches in order to reduce the level of overplay. In the longer term seek to make improvements to maintenance in order to better pitch quality, both for use and to increase capacity available.	Council RFU		S-M	L-M	
3	Armscroft Park (Gloucester Old Boys RFC)	Rugby union	Sports Club	Two poor quality council pitches managed by AMEY and used by Gloucester Old Boys RFC. Spare capacity of one match sessions per week available at peak time.	Improve pitch quality and seek options to maximise use to accommodate future demand.	Council RFU	Local (medium)	M	M	Protect Enhance
4	Barnwood Bowling Club	Bowls	Sports Club	Good quality flat green which serves 82 members and is therefore overplayed. Club recently received funding to improve surrounding access areas.	Continue to sustain standard of maintenance in order to protect green quality. Consider use of additional suitable greens in order to alleviate some overuse.	Club	Local (low)	L	L	Protect Provide
5	Barnwood Park Arts College (Coney Hill RFC)	Football	School	One youth 11v11 and two 9v9 pitches, all assessed as poor quality and unavailable for community use. All are overplayed as a result of curriculum use and school fixtures.	Improve pitch quality through an increase in maintenance investment in order to increase capacity available and potential future community use.	Council FA	Key centre (medium)	M	L	Protect Enhance
		Cricket		Good quality six wicket square cut and used by Arcadians Nine Elms CC. Outfield quality significantly poorer, very undulating and uneven. Sublet from Coney Hill RFC which rents from the school, also providing changing facilities. Capacity for a further seven matches per season.	Look to establish long-term security of tenure for the Club. Alternatively, investigate other potential sites which may offer greater security if required. Improve outfield quality and in the longer term consider adding additional wickets if demand increases.	Council ECB		S-M	M	
		Rugby union		One poor quality senior pitch used by Coney Hill RFC first team. Limited curricular use and school fixtures. Overplayed by 0.5 match sessions per week.	Improve pitch quality in order to increase capacity for school and community use.	Council RFU		M	M	
		Tennis		Six poor quality tarmac courts also overmarked for netball. Not available for community use and not floodlit.	Look to make improvements where possible, including re-lining.	Council LTA		L	L-M	

<sup>9</sup> Timescales: (S) -Short (1-2 years); (M) - Medium (3-5 years); (L) - Long (6+ years)

<sup>10</sup> (L) -Low - less than £50k; (M) -Medium - £50k-£250k; (H) -High £250k and above

**GLOUCESTER  
PLAYING PITCH STRATEGY**

Site ID	Site	Sport	Management	Current status	Recommended actions	Partners	Hierarchy tier (priority)	Timescales <sup>11</sup>	Cost <sup>12</sup>	Aim
6	Beaufort Community School	Football	School	Two adult and two youth 11v11 pitches, all assessed as poor quality. Community use by Tuffley Rovers FC adult and youth teams and Barton Rovers FC. All pitches are overplayed through a combination of school use and consistent club use.	Improve pitch quality through an increase in maintenance investment in order to address overplay and build future capacity for community and school use.	Council FA	Key centre (medium)	S-M	L	Protect Enhance
		Cricket		One good quality non-turf wicket, unavailable for community use.	Explore options for future community use if demand in the Area increases. Consider potential use for informal or midweek cricket if required.	Council ECB		M-L	L	
		Rugby union		One rugby union pitch and two football pitches marked for rugby union until January. Available for community use but currently only used by school. All three pitches overplayed due to a significant amount of school use.	Improve pitch quality to increase capacity available and potential future community use.	Council RFU		M	M	
		Tennis		Three standard quality tarmac courts with floodlighting. Available to hire but currently unused.	Seek options to maximise use to accommodate future community demand for use by clubs or potential for creation of a satellite club.	Council LTA		M	L	
8	Blackbridge Playing Field	Football	County Council/ Council	One poor quality youth 9v9 pitch used by Tuffley Rovers FC. Spare capacity of 0.5 match sessions available at peak time. The site is part of community led proposals, supported by the City and County Councils, to form a sporting hub venue incorporating the existing running track.	Improve pitch quality and maximise use. Determine potential for the creation of a hub venue to serve the south of the City including options for 3G pitch provision and additional grass pitches. Potential site for FA Pitch Improvement Programme.	County Council FA RFU	Hub (medium)	M	H	Protect Provide Enhance
9	British Gas Sports Field (Tuffley Rovers AFC)	Football	Sports Club	Standard quality adult pitch home to Tuffley Rovers FC. Less than three years tenure remaining on the lease from National Grid. Club recently received in excess of £43,000 from Sport England Protecting Playing Fields to help towards securing future tenure.	Support the Club in negotiations to secure long term tenure of the site, either through lease or by purchase of the land. Also help the Club in further development of the site and progression towards Step 5 football.	Club FA	Local (high)	S-M	M-H	Protect Enhance
10	Caer Glow Bowling Club	Bowls	Sports Club	Good quality flat green also used by Co-op BC. Club has in excess of 50 members and the green is likely to be overplayed taking into contention additional use from Co-op BC.	Continue to sustain standard of maintenance in order to protect green quality. Consider use of additional suitable greens in order to alleviate some overuse.	Club	Local (low)	M	L	Protect
11	Clock Tower Park	Football	Council	Standard quality adult pitch used by Abbeymead Rovers FC U13s teams. 0.5 match sessions available at peak time.	Seek to make improvements to maintenance in order to better pitch quality. Could accommodate usage from overplayed sites.	Council FA	Local (low)	M	L	Protect Enhance
		Tennis		Two poor quality tarmac courts without floodlighting. No recorded use beyond likely casual play. Metal nets render the site unsuitable for club use.	Look to make improvements to quality where possible, including resurfacing and re-lining. Ensure accessibility for social play and maximise use through community participation events where possible.	Council LTA		M	L	
12	Coney Hill Park	Football	Council	Poor quality adult pitch used by three single adult teams including some training. Changing facilities provided at Coney Hill RFC. Overplayed by 1.5 match sessions.	In the short term transfer training from match pitches in order to alleviate overplay. In the longer term improve pitch quality or seek options to relocate pitch on another site	Council FA	Local/ Reserve (low)	S-M	L-M	Enhance

<sup>11</sup> Timescales: (S) -Short (1-2 years); (M) - Medium (3-5 years); (L) - Long (6+ years)

<sup>12</sup> (L) -Low - less than £50k; (M) -Medium - £50k-£250k; (H) -High £250k and above

**GLOUCESTER  
PLAYING PITCH STRATEGY**

Site ID	Site	Sport	Management	Current status	Recommended actions	Partners	Hierarchy tier (priority)	Timescales <sup>11</sup>	Cost <sup>12</sup>	Aim
					and retain this site as strategic reserve.					
Site ID	Site	Sport	Management	Current status	Recommended actions	Partners	Hierarchy tier (priority)	Timescales <sup>13</sup>	Cost <sup>14</sup>	Aim
13	Coney Hill RFC	Rugby union	Sports Club	Two poor quality senior pitches, one used for both senior and junior matches and subsequently overplayed by 4.5 match sessions. The other pitch is unused other than to accommodate matches for infrequent club teams such as Vets and therefore has 0.5 match sessions available at peak time.	Seek to make improvements to maintenance in order to better pitch quality to help address overplay. Make greater use of the unused pitch onsite in order to distribute play. Seek options for floodlighting. Support the club in determining potential for asset transfer or negotiation of a longer term lease.	Club RFU Council County Council	Local <b>(high)</b>	S	L	Protect Enhance
14	Crypt School	Football	School	Three good quality pitches unavailable for community use, of adult, youth 11v11 and 9v9 sizes. Adult pitch overplayed by one match session and both youth pitches to capacity due to curricular use and school fixtures.	Retain for school use and ensure maintenance is sufficient enough to maintain quality.	Council FA	Local (medium)	L	L	Protect Enhance
		Cricket		Good quality square with five wickets, used by four school teams and AIW CC midweek and at weekends. Overplayed by 25 matches per season. Poor pavilion and changing facilities.	Work to improve pavilion facilities to provide changing provision which adheres to league requirements. Consider additional wickets to address overplay.	Council ECB		M	H	
		Rugby union		Three poor quality senior pitches unavailable for community use to protect quality given substantial school use.	Improve pitch quality and seek options to establish community use in the future. Potential partnership could be established with local club.	Council RFU		M	M	
		Tennis		Two standard quality tarmac courts, unavailable for community use due to the lack of floodlighting.	Continue to develop tennis and maximise use by the school. If demand increases, seek options for floodlighting and establish community use.	Council LTA		L	M	
15	Debenhams Sports Field	Football	University	Site recently purchased by University of Gloucestershire, previously including one cricket square and overmarked adult football pitch. Disused and untended for last two years.	Continue to work with the University to establish best options for provision of pitches. Good quality cricket pitch to be re provided to meet shortfalls in quality in the City. Provision of 3G pitch at Plock Court satisfies re provision of grass football.	University FA ECB	-	S-M	H	Provide
		Cricket								
17	Dowty Sport & Social Club	Football	Sports Club	Six good quality adult pitches used mostly by FC Lakeside amongst other teams. One mini 5v5 and one two 7v7 pitches all of good quality with no recorded play from Gloucester teams. All pitches show available match sessions however anecdotal evidence suggests they are played to capacity by additional clubs from neighbouring authorities.	Support use of the site for Gloucester based teams and residents given close proximity to the City.	Sports Club FA LTA	Key centre (medium)	L	L	Protect
		Bowls		One good quality flat green which serves circa 51 members. Likely capacity for some additional play.						
		Tennis		Two good quality courts without floodlighting used by Dowty TC.						
19	Elmbridge Park	Football	Council	One poor quality adult pitch played to capacity	Improve pitch quality or seek options to	Council	Local/	S-M	L-M	Enhance

<sup>13</sup> Timescales: (S) -Short (1-2 years); (M) - Medium (3-5 years); (L) - Long (6+ years)

<sup>14</sup> (L) -Low - less than £50k; (M) -Medium - £50k-£250k; (H) -High £250k and above



**GLOUCESTER  
PLAYING PITCH STRATEGY**

Site ID	Site	Sport	Management	Current status	Recommended actions	Partners	Hierarchy tier (priority)	Timescales <sup>11</sup>	Cost <sup>12</sup>	Aim
	(Windfall Way Open Space)			by Gloucester Elmleaze FC and Abbeymead Rovers youth.	relocate pitch on another site and retain this site as strategic reserve.	FA	Reserve (low)			

**GLOUCESTER  
PLAYING PITCH STRATEGY**

Site ID	Site	Sport	Management	Current status	Recommended actions	Partners	Hierarchy tier (priority)	Timescales <sup>15</sup>	Cost <sup>16</sup>	Aim
20	Sandyleaze Open Space (Elmbridge Playing Field)  (Old Richians RFC)	Football	Sports Club	Poor quality adult pitch played to capacity by Old Richians FC.	Improve pitch quality through an increase in maintenance investment in order to build strategic reserve/future capacity.	Club FA	Key centre (medium)	M	L	Protect Enhance
		Rugby union		Two poor quality senior pitches used by Old Richians RFC for senior and junior matches and weekend training. Overplayed by 3.25 match sessions given added use by Sir Thomas Rich's School for Saturday morning fixtures. One mini pitch with spare capacity as much mini play takes place on the neighbouring school pitches.	Make improvements to maintenance in order to better pitch quality, both for use and to increase capacity available.  In the short term look to transfer training use from match pitches in order to reduce the level of overplay.  Consider the mini pitch to be converted into a floodlit training area.	Club RFU		S-M	L-M	
21	Gala Wilton Football Club	Football	Sports Club	One poor quality adult pitch overplayed by 0.5 match sessions. Lease on the site has expired and the Club hopes to negotiate a long term lease with the Council for both the pitch and clubhouse building. The Club has desires to install floodlighting in order to meet Step 6 criteria and has planning permission to do so.	Although the grant can only be applied for when promotion is gained, support the Club in negotiating a long term lease on the site so that it may in the future apply for grant funding for floodlighting. Seek to improve pitch quality through greater maintenance to eliminate overplay.	Council Club FA	Local (medium)	S	M	Protect Enhance
22	Glevum Way Park	Football	Council	One standard quality adult pitch with one match session available at peak time. One mini 7v7 pitch with no spare capacity at peak time and two mini 5v5 pitches which are currently unused. Site used by Abbeymead Rovers FC junior and girls sections.	Improve pitch quality and seek to make greater use of available capacity and unused pitches to address current shortfalls – potential to convert to youth/adult pitch.	Council FA	Local (medium)	S	L-M	Protect Provide
23	Bishop's College (Old Centralians RFC)	Football	County Council Aspire	Two good quality pitches used by teams playing both Saturday and Sunday. 0.5 match sessions available at peak time.	Multi NGB approach to be taken regarding intentions for potential future development of the site, including impacts on the adjacent Plock Court which operates synergistically alongside Bishop's College, as well as the associated development of Debenhams Sports Field. Ensure no loss of provision for any resident sport and agree upon optimal pitch configuration should development go ahead.	Aspire University Council FA ECB RFU RFL	Key centre (medium)	S-M	M-H	Protect Enhance
		Cricket		One non-turf wicket of poor quality and not suitable for use.						
		Rugby union		Two poor quality senior pitches, one of which is floodlit and also used throughout the summer by Gloucestershire Warriors RLFC. Used by Old Centralians RFC for matches and by other clubs for floodlit training. Intended location for proposed 3G developments.						
		Rugby league								

<sup>15</sup> Timescales: (S) -Short (1-2 years); (M) - Medium (3-5 years); (L) - Long (6+ years)

<sup>16</sup> (L) -Low - less than £50k; (M) -Medium - £50k-£250k; (H) -High £250k and above

**GLOUCESTER  
PLAYING PITCH STRATEGY**

Site ID	Site	Sport	Management	Current status	Recommended actions	Partners	Hierarchy tier (priority)	Timescales <sup>17</sup>	Cost <sup>18</sup>	Aim
24	Gloucester Academy (Old Centralians RFC)	Football	School	Standard quality adult pitch used by the school and a number of community adult teams. Overplayed by 1.5 match sessions taking into account all use.	Seek to make improvements to maintenance in order to better pitch quality, both for use and to reduce level of overplay. Site for FA Pitch Improvement Programme.	Council FA	Key centre (high)	S	L	Protect Enhance Provide
		Cricket		Standard quality square with five wickets, as well as one non-turf wicket. Outfield area is too small and therefore not suitable for senior cricket. Currently only used by junior school teams.	Continue to develop cricket at the school and link with local clubs. Determine the potential for community use by junior club teams where suitable and if demand exists in the future.	Council ECB		L	L	
		Rugby union		One poor quality senior pitch used by both the school and by Old Centralians RFC. The Club plays in the national leagues and is frustrated that the pitch is usually in unplayable condition from November and February. Club and school are keen to convert the pitch to a World Reg 22 AGP.	Investigate potential for installation of a functioning drainage system. Coupled with that improve maintenance, particularly to enable greater drainage of water. Explore longer term aspirations of a World Rugby compliant 3G AGP should there be no other viable drainage solution.	Council Club RFU		S	M	
		Tennis		Three poor quality tarmac courts with floodlighting though unavailable for community use.	Look to make improvements to quality where possible, including resurfacing/re-lining and investigate potential future demand for community use.	Council LTA		L	M	
25	Gloucester All Blues RFC (Alney Island)	Rugby union	Sports Club	Council owned site with no long term lease. Two poor quality senior pitches which for several years were unusable due to flooding from the nearby river. Training on pitches using mobile floodlights. Club to return to play here for 2015/16 season though pitches are overplayed by 1.5 match sessions. Unused mini pitch also marked as the Club tries to begin a junior section.	Support the Club in starting and developing a junior section and further growth. Seek to make improvements to maintenance in order to better pitch quality, both for use and to reduce level of overplay. Look to transfer training use from match pitches to alleviate overplay and upgrade floodlighting as appropriate.	Club RFU Council	Local (medium)	M	M-H	Protect Enhance
26	Gloucester City Bowling Club	Bowls	Sports Club	Two good quality flat greens, one of which is an artificial surface shared with Gloucester Spa BC which is also onsite. Clubhouse is also shared between the two clubs.	Continue to sustain standard of maintenance in order to protect green quality. Maintain inter-club relationship to ensure the site remains a high activity area for bowls.	Clubs	Local (medium)	L	L	Protect
27	Gloucester Park	Football	Sports Club	Good quality adult pitch marked onto the cricket outfield, used by Tredworth Tigers FC adult team. Spare capacity of 2.5 match sessions, of which 0.5 are available at peak time.	Uphold standards of maintenance to ensure pitch quality remains good, whilst managing use between football and cricket seasons to avoid fixture clashes.	Club FA	Key centre (low)	L	L	Protect
		Cricket		Standard quality square with 10 wickets, played to capacity by Gloucester City Winget CC, therefore no capacity for additional play. Lack of car parking provision.	Sustain and further improve quality of maintenance in order to ensure square quality is able to sustain play up to capacity. In the longer term, seek to resolve issues regarding lack of parking space and access to off road parking onsite.	Club ECB		M	M	
		Bowls		Good quality flat green used by Gloucester Spa BC. Clubhouse is also shared between the two clubs.	Continue to sustain standard of maintenance in order to protect green quality. Maintain inter-club relationship to ensure the site remains a high activity area for bowls.	Clubs		L	L	

<sup>17</sup> Timescales: (S) -Short (1-2 years); (M) - Medium (3-5 years); (L) - Long (6+ years)

<sup>18</sup> (L) -Low - less than £50k; (M) -Medium - £50k-£250k; (H) -High £250k and above

**GLOUCESTER  
PLAYING PITCH STRATEGY**

Site ID	Site	Sport	Management	Current status	Recommended actions	Partners	Hierarchy tier (priority)	Timescales <sup>19</sup>	Cost <sup>20</sup>	Aim
29	Gordon League RFC	Rugby union	Sports Club	Two poor quality senior pitches used by senior club teams and Gloucestershire College for matches. One match session available at senior peak time. One further poor quality senior pitch with floodlighting used for all training, overplayed by 2.5 match sessions per week.	Address pitch quality and surface issues including suspected broken drain underneath Pitch Two. Work to improve quality of maintenance in order to better pitch quality, both for use and to increase capacity available to accommodate the establishment and growth of planned junior section.	Club RFU	Local (high)	S-M	M	Protect Enhance
30	Hempsted Recreation Ground	Football	Council	Poor quality adult pitch used by Trinity & Quedgeley United FC. Spare capacity of 0.5 match sessions available at peak time.	Improve pitch quality through an increase in maintenance investment and seek to make greater use of available capacity and unused pitches to address current shortfalls – potential to convert to youth pitch.	Council FA	Local (low)	M	L	Protect Enhance
31	Heron Park	Football	Council	Poor quality adult pitch used by Abbeymead Rovers FC mens, womens and youth 11v11 teams. Overplayed by 2.5 match sessions.	In the shorter term transfer play to sites with spare capacity and in the longer term improve quality through an increase in maintenance investment in order to address overplay.	Council FA	Local (medium)	S	L	Protect Enhance
33	High School For Girls (Spartans RFC)	Rugby union	School	One poor quality senior pitch used little by the school other than for athletics in summer. Community use by Spartans RFC senior and junior sections for matches and training. Overplayed by one match session per week.	Explore options to create a floodlit training area in order to accommodate training and reduce overplay on the match pitch.	Council RFU	Local (medium)	M	M	Protect Enhance
		Tennis		Six standard quality tarmac courts currently only used by the school. Plans for the installation of a key fob entry system to increase community use in conjunction with Oxstalls Sports Park. Recently been awarded LTA funding to help install.	Work to increase community use and establish the site with a focus on social and unorganised tennis in the area.	Council Aspire LTA		M	L	
34	Holmleigh Park	Football	Council	Two poor quality adult pitches currently unused and therefore have two match sessions available at peak time. One poor quality youth 9v9 pitch used by Tuffley Rovers FC and overplayed by 0.5 match sessions per week.	Improve pitch quality through an increase in maintenance investment and maximise use to help address shortfalls.	Council FA	Local (medium)	S	L	Protect Enhance Provide
35	Hucclecote Playing Field (Hucclecote RFC)	Cricket	Sports Club	Poor quality square with eight wickets, with the outfield overlapping the rugby union pitch. Used by Gloucester Harelquins CC which sub-lets from the rugby club and has no subsequent confirmed security of tenure. Spare capacity for an additional 26 matches per season.	Work to establish security of tenure for the cricket club beyond the next three years. Seek to improve square quality through better maintenance and sufficient access to equipment and specialist knowledge.	ECB Council	Key centre (high)	S	L-M	Protect Enhance
		Rugby union		One poor quality senior pitch and three poor quality mini pitches used by Hucclecote RFC. Senior pitch is overplayed by 0.5 sessions per week due to senior and junior matches, whilst mini pitches have 2.25 matches capacity, none of which are available at peak time.	Seek to make improvements to maintenance in order to better pitch quality, both for use and to increase capacity available.	RFU Council		S	L-M	

<sup>19</sup> Timescales: (S) -Short (1-2 years); (M) - Medium (3-5 years); (L) - Long (6+ years)

<sup>20</sup> (L) -Low - less than £50k; (M) -Medium - £50k-£250k; (H) -High £250k and above

**GLOUCESTER  
PLAYING PITCH STRATEGY**

Site ID	Site	Sport	Management	Current status	Recommended actions	Partners	Hierarchy tier (priority)	Timescales <sup>21</sup>	Cost <sup>22</sup>	Aim
36	King George V Playing Fields (Hucclecote RFC)	Football	Council	Four poor quality mini 7v7 pitches, also used for both 5v5 and youth 9v9 matches but Hucclecote YFC junior section. No spare capacity available at peak time.	Seek additional pitch capacity in order to reduce current use of overmarked pitches. Work towards improving maintenance in order to better pitch quality, both for use and to increase future capacity available. Potential site for FA Pitch Improvement Programme.	Council FA	Key centre (medium)	M	M	Protect Enhance
		Cricket		Standard quality ten wicket square used as a secondary location by Ullenwood Bharat CC to accommodate imported demand from its third and fourth senior teams. Spare capacity for an additional 31 matches per year.	Determine intentions for continued use of the site by imported teams given the new ground developments the Club is undertaking outside of Gloucester. Improve quality and seek to maximise use of spare capacity for future demand.	Council ECB		S-M	M	
		Rugby union		One poor quality senior pitch used by Hucclecote RFC mini and junior teams as a secondary venue for matches and training most weeks. Subsequently overplayed by one match session per week. Club would like to relocate all use back to the main club site.	Support movement of play onto new junior pitch which will run adjacent to Hucclecote Playing Field, whilst retaining use of this site to accommodate play as required. Seek to make improvements to maintenance in order to better pitch quality, both for use and to increase capacity available.	Council RFU		S	L	
37	Kingsway Manor Farm	Football	Council	One poor quality adult pitch currently unused and therefore available at peak time.	Improve quality and maximise use. Alternatively if low value site re provide pitches/investment in capacity at a hub site and retain as a reserve site.	Council FA	Local/ Reserve (low)	M	M	Enhance Provide
38	Lobleys Drive Open Space	Football	Council	Two mini 7v7 pitches and one youth 9v9 pitch all of poor quality, used by Abbeymead Rovers FC junior section. No capacity available for additional 7v7 play, whilst the 9v9 pitch is overplayed by 0.5 match sessions per week.	Improve pitch quality through an increase in maintenance investment, both for use and to reduce level of overplay and build future capacity.	Council FA	Local (medium)	M	L	Protect Enhance
39	Longlevens Recreation Ground (Longlevens RFC & Dowty RFC)	Football	Council/ Sports Club	Two poor quality adult pitches used mainly by Longlevens FC adult and youth 11v11 teams. Overplayed by 1.5 match sessions. Unmet demand for 0.5 adult match sessions. One poor quality youth 9v9 pitch played to capacity, also used in part for rugby union training.	Improve quality through an increase in maintenance investment in order to better pitch quality for use, to reduce level of overplay and to accommodate unmet demand. Site for FA Pitch Improvement Programme.	Council Club FA	Key centre (high)	S	L	Protect Enhance Provide
		Rugby union	Council/ Sports Club	Two poor quality senior pitches used for matches by Longlevens RFC senior and junior teams. Also used by Dowty RFC. Overplayed by three match sessions per week.	Improve pitch quality/maintenance in order to address overplay. Explore options for access to dedicated floodlit training area to alleviate use of match pitches.	Council Club RFU		S	M	
40	Matson Park (Matson RFC)	Rugby union	Sports Club	Two poor quality senior pitches used by Matson RFC senior and junior sections for both matches and training. Overplayed by five match sessions.	Improve quality and transfer training use from match pitches in order to address overplay.	Council RFU Club	Local (medium)	M	M	Protect Enhance
41	Meadow Park (Gloucester City FC)	Football	Sports Club	Step 2 ground which has been unusable since being flooded in 2007. Gloucester City FC currently displaced to Cheltenham and remains keen to work towards a solution to return to the City in the	Support the Club in applications for grant funding which would allow development of a site to allow it to return to Gloucester.	FA Club	Key centre (high)	M-L	H	Provide Enhance

<sup>21</sup> Timescales: (S) -Short (1-2 years); (M) - Medium (3-5 years); (L) - Long (6+ years)

<sup>22</sup> (L) -Low - less than £50k; (M) -Medium - £50k-£250k; (H) -High £250k and above



**GLOUCESTER  
PLAYING PITCH STRATEGY**

Site ID	Site	Sport	Management	Current status	Recommended actions	Partners	Hierarchy tier (priority)	Timescales <sup>21</sup>	Cost <sup>22</sup>	Aim
				future.						
Site ID	Site	Sport	Management	Current status	Recommended actions	Partners	Hierarchy tier (priority)	Timescales <sup>23</sup>	Cost <sup>24</sup>	Aim
42	Memorial Ground (Old Cryptians RFC & Widden Old Boys RFC)	Rugby union	Sports Club	Four poor quality pitches, two of which are used by Old Cryptians RFC and two by Widden Old Boys RFC, each with separate lease agreements. All four pitches are overplayed, particularly the fully and partially floodlit pitches which are overplayed by three and six match sessions respectively, largely due to training use in excess of match play.	Transfer training use from match pitches and improve quality/maintenance in order to address overplay and build future capacity. Look at options to upgrade floodlit where possible. Support Widden Old Boys RFC in plans to improve ancillary facilities and repair the existing roof.	RFU Sports Club	Local (high)	S-M	M	Protect Enhance
43	Murray Hall	Football	Council	Mini 7v7 pitch assessed as poor quality. Currently unused and therefore is available at peak time.	Improve quality through an increase in maintenance investment and maximise usage to address shortfalls by establishing a resident club.	Council FA	Local (low)	M	L	Protect Enhance
44	Oxstalls Sports Park	AGP	Council Aspire	One standard sand dressed pitch with floodlights, resurfaced in 2012. Used intensively by Gloucester City HC for matches and training as well by Cleevillians HC. Much competition with football training demand.	Priority hockey site and should have long term protection of this AGP for hockey. Seek to increase capacity available for midweek hockey training whilst working closely with Gloucester University re proposed 3G developments to ascertain potential effects and transfer of midweek football demand from this pitch. Ensure sinking fund is in place for further future re carpeting.	Council Aspire EH FA University	Key centre (high)	M	L	Protect Enhance
		Tennis		Four good quality clay courts with floodlighting. Key tennis focus site within the City, also providing indoor provision. Also used by Gloucester College students.	Continue to maintain court quality and provide outdoor provision onsite, maximising use of floodlights alongside indoor facilities throughout the autumn and winter seasons. Link in with wider plans for outdoor provision at school satellite venues.			Aspire Council LTA	L	
45	Parry Road Playing Fields	Football	Council	Standard quality adult pitch, currently unused and therefore available at peak time. To be re-marked for 2015/16 season as two youth football pitches for new club Heart of Gloucester FC consisting of one 7v7 and one 5v5 pitch.	Support further club growth as appropriate. Improve quality/maintenance and support establishment and development of the new resident club.	Council FA	Local (medium)	S	L	Protect Enhance Provide

<sup>23</sup> Timescales: (S) -Short (1-2 years); (M) - Medium (3-5 years); (L) - Long (6+ years)

<sup>24</sup> (L) -Low - less than £50k; (M) -Medium - £50k-£250k; (H) -High £250k and above

**GLOUCESTER  
PLAYING PITCH STRATEGY**

Site ID	Site	Sport	Management	Current status	Recommended actions	Partners	Hierarchy tier (priority)	Timescales <sup>25</sup>	Cost <sup>26</sup>	Aim
46	Plock Court	Football	Council Aspire	Four poor quality adult pitches primarily used by teams from the Gloucester & District Sunday Football League. 0.5 match sessions available at peak time. Also one unused youth 9v9 pitch available at peak time. Changing provision is insufficient and is restricting the growth of the league.	Improve pitch quality and maximise usage of all pitches. Consider reconfiguration of adult pitches to address mini/youth shortfalls. Linked to maximising use, explore options for funding to improve/increase the size/availability of changing facilities in order to maximise pitches available to Sunday league teams and help facilitate growth. Site for FA Pitch Improvement Programme.	Aspire Council FA University	Hub (high)	S-M	H	Protect Enhance Provide
		Cricket		Standard quality square with 10 wickets, currently unused in the absence of demand. Marked and maintained as a reserve facility. Previously had six squares which are able to be reinstated should demand for cricket increase.	Improve quality and maximise use. Establish a club currently playing elsewhere with no security of tenure to use this site should there be an increase in quality, particularly the provision of suitable ancillary and changing facilities. Potential investment from loss of cricket at Debenhams Sports Field could help to facilitate this.	Aspire Council ECB University		S-M	M	
		Rugby union		No pitches currently marked but the site previously had one junior pitch which is able to be marked again should there be future demand.	Explore potential demand amongst clubs in the area and determine whether reinstating this pitch could address shortfalls at club sites in the locality.	Aspire Council RFU		S-M	L-M	
47	Randwick Park	Football	Council	Poor quality adult pitch currently unused, therefore available at peak time. Standard quality mini 7v7 pitch used by Tuffley Rovers FC with no spare capacity available at peak time.	Improve pitch quality through an increase in maintenance investment and maximise use.	Council FA	Local (low)	M	L	Protect Enhance
		Tennis		One poor quality tarmac court without floodlighting. No recorded club use though it is likely that the court is used occasionally for social and non-organised tennis.	Seek to improve court quality and ensure access for continued irregular use by local residents.	Council LTA		L	L-M	
48	Ribston Hall High School	Football	School	Two poor quality adult pitches used by Tredworth Tigers FC U13s. Overplayed by 1.5 match sessions when taking into consideration weekly school use.	Seek to make improvements to maintenance in order to better pitch quality, both for use and to increase capacity available.	Council FA	Local (low)	M	L	Protect Enhance
		AGP		Small sized sand dressed AGP mainly used by all girls school for hockey practice but lacking floodlights. Also marked as four tennis courts for use in the summer.	Determine scope for installing floodlighting and whether the site has further potential to be used to accommodate football and hockey training demand in the evenings.	Council FA EH		M	L-M	
		Tennis		Three tarmac courts of standard quality without floodlighting, currently unused other than by the school.	Continue to develop school tennis and try to make improvements to court quality where possible.	Council LTA		L	L	
49	Riverside Sports & Leisure Club	Tennis	Commercial	Four good quality tarmac courts with floodlighting. Used by Riverside TC which has two teams.	Continue to provide good quality floodlit facilities for club members and ensure access to sufficient court time for matches and coaching.	Sports Club LTA	Local (low)	L	L	Protect Enhance

<sup>25</sup> Timescales: (S) -Short (1-2 years); (M) - Medium (3-5 years); (L) - Long (6+ years)

<sup>26</sup> (L) -Low - less than £50k; (M) -Medium - £50k-£250k; (H) -High £250k and above



**GLOUCESTER  
PLAYING PITCH STRATEGY**

Site ID	Site	Sport	Management	Current status	Recommended actions	Partners	Hierarchy tier (priority)	Timescales <sup>27</sup>	Cost <sup>28</sup>	Aim
50	Saw Mills End Playing Field	Football	Sports Club	Standard quality adult pitch used by Longlevens FC 1 <sup>st</sup> and Ladies teams. Spare capacity of 0.5 match sessions available at peak time. Site currently meets required Step 6 standard but floodlighting does not comply with Step 5 specifications, limiting the team progressing to the next tier of the pyramid structure.	Support the Club in development of facilities to the required Step 5 standard, particularly floodlighting, enabling the Club to achieve promotion in practice.	Club FA	Local (medium)	M	L-M	Protect Enhance
51	Saintbridge Recreation Ground	Rugby union	Council	Poor quality senior pitch currently not cut or lined ready for play due to a lack of demand.	Explore potential demand amongst clubs in the area and determine whether reinstating this pitch could address shortfalls at club sites in the locality. Quality would need to be improved if demand exists.	Council RFU	Local (medium)	S	M	Provide
52	Severn Vale School	Football	School	One adult pitch and one youth 11v11 pitch, both of poor quality and unavailable for community use due to school concerns regarding security and access to the rear of the building. Each pitch overlaid by two match sessions when taking into consideration weekly school use.	Work with the school to address concerns regarding community use and potential to make pitch accessible for future use. Seek to improve pitch quality through increased level and standard of maintenance. Site for FA Pitch Improvement Programme.	Council FA	Key centre (high)	S	L-M	Protect Enhance Provide
		Cricket		One good quality non-turf wicket, used only by the school and not made available for community use.	Work with the school to address concerns regarding community use and potential to make pitch accessible for future use.	Council ECB		L	L	
		Rugby union		Poor quality senior pitch unavailable for community use due to school concerns regarding security and access to the rear of the building.	Work with the school to address concerns regarding community use and potential to make pitch accessible for future use.	Council RFU		S	L-M	
		AGP		Standard quality sand filled surface well in excess of 10 years old and requiring replacement. No hockey use and instead used significantly for football by both school and community clubs.	Improve pitch quality. England Hockey to identify priority for this AGP to be retained as sand for hockey use. If to be retained as sand surface ensure hockey can be accommodated as a priority. Decision to be reached by FA and EH in the context of Citywide Strategy for 3G pitches.	Council FA EH		M	H	
		Tennis		Six poor quality tarmac courts used infrequently for pay and play beyond school use. Managed by Quedgeley Community Trust.	Continue to work with Oxstalls Sports Park towards plans for key fob entry system and to increase court usage through creation of a satellite club onsite.	Council Trust Aspire LTA		L	L	

<sup>27</sup> Timescales: (S) -Short (1-2 years); (M) - Medium (3-5 years); (L) - Long (6+ years)

<sup>28</sup> (L) -Low - less than £50k; (M) -Medium - £50k-£250k; (H) -High £250k and above

**GLOUCESTER  
PLAYING PITCH STRATEGY**

Site ID	Site	Sport	Management	Current status	Recommended actions	Partners	Hierarchy tier (priority)	Timescales <sup>29</sup>	Cost <sup>30</sup>	Aim
53	Sir Thomas Rich's Sports Centre (Old Richians RFC)	Football	School	One standard quality adult football pitch which overlaps the cricket outfield, not made available for community use. Two further adult pitches are used dually for both football and rugby union. All three pitches are at capacity when considering weekly school use and fixtures.	Retain for school use. Manage dual use pitches carefully so not to negatively impact on pitch quality.	Council FA	Key centre (medium)	L	L	Protect Enhance
		Cricket		Good quality five wicket square used by school teams and played to capacity. Previously had community use but now unavailable due to issues regarding proximity of changing and pavilion facilities to the playing area as per league regulations.	Explore potential future use given good quality pitch.	Council ECB		S-M	M	
		Rugby union		Four poor quality senior pitches, two of which are also used for football. Heavily used by 17 school teams for training and matches. Two far pitches are also used by Old Richians RFC junior section and are overplayed by eight match sessions, whilst the two remaining pitches are overplayed by six match sessions.	Look to transfer training use from match pitches in order to reduce the level of overplay. Seek to make improvements to maintenance in order to better pitch quality, both for use and to increase capacity available.	Council RFU		S-M	M	
		Bowls		One good quality green used by Sir Thomas Rich's BC. Likely that capacity is available for further use.	Continue to ensure required standard of maintenance and continued green quality.	Club		L	L	
		Tennis		Seven poor quality tarmac courts overmarked for netball use. School would like resurface due to poor quality. No current community use.	Determine potential to resurface courts and make available for community use. Support the school in search of funding opportunities if required.	Council LTA		M	M	
54	St Peters Roman Catholic High School	Football	School	Poor quality youth 9v9 pitch not made available for community use in order to protect surface quality for school use. Overplayed by two match sessions when considering school usage.	Improve pitch quality through an increase in maintenance investment and maximise use. Potential site for FA Pitch Improvement Programme.	Council FA	Key centre (medium)	M	L	Protect Enhance
		Rugby union		Three poor quality senior pitches not made available for community use in order to protect surface quality for school use and occasional Saturday morning fixtures.	Improve quality and retain for school use.	Council RFU		M	L-M	
		AGP		Standard quality sand dressed pitch with floodlighting in need of surface replacement. West Bromwich Albion FC hires the pitch and has exclusive access on Mondays and Wednesdays for its academy teams, which leaves little capacity otherwise. Also used by Gloucester City HC as an alternate venue.	Improve pitch quality. England Hockey to identify priority for this AGP to be retained as sand for hockey use. If to be retained as sand surface ensure hockey can be accommodated as a priority. Decision to be reached by FA and EH in the context of Citywide Strategy for 3G pitches.	Council FA EH		S	L	
		Tennis		Two areas with two and five poor quality tarmac courts respectively, regularly used as playground areas. Used by St Peter's Junior TC which reports unmet demand and a lack of	Determine potential to resurface courts and to increase community use and enable club growth. Support the school in search of funding opportunities if required.	Council LTA		S-M	M	

<sup>29</sup> Timescales: (S) -Short (1-2 years); (M) - Medium (3-5 years); (L) - Long (6+ years)

<sup>30</sup> (L) -Low - less than £50k; (M) -Medium - £50k-£250k; (H) -High £250k and above

**GLOUCESTER  
PLAYING PITCH STRATEGY**

Site ID	Site	Sport	Management	Current status	Recommended actions	Partners	Hierarchy tier (priority)	Timescales <sup>29</sup>	Cost <sup>30</sup>	Aim
				access to good quality surfaces.						
Site ID	Site	Sport	Management	Current status	Recommended actions	Partners	Hierarchy tier (priority)	Timescales <sup>31</sup>	Cost <sup>32</sup>	Aim
56	The Lannett	Football	Council	One senior and one mini rugby union pitch both of poor quality. Currently unused since previous club Tredworth RFC folded. Council has plans to mark as football pitches for Tuffley Rovers FC for 2015/16 season.	No current local demand for rugby pitch. Improve quality and retain as football pitch going forward to meet demand identified. Re-evaluate potential as a dual sport site reinstating a rugby union pitch should a club register interest.	Council FA	Local (low)	S	L	Protect Enhance
57	The Oaks	Football	Council	Two poor quality mini 7v7 pitches used by Abbeymead Rovers FC U9s. No capacity for further use at peak time.	Seek to make improvements to maintenance in order to better pitch quality, both for use and to increase capacity future capacity.	Council FA	Local (medium)	M	L	Protect Enhance
59	Tuffley Park	Football	Council	Two adult, one youth 9v9 and one mini 7v7 pitch, all assessed as standard quality. Well used, mainly by Gloucester City Ladies FC junior section. Available capacity of 1.5 adult match sessions and each on 7v7 and 9v9 pitches.	Maximise usage to address shortfalls whilst seeking to increase pitch quality through improved maintenance in order to further add to potential capacity.	Council FA	Key centre (medium)	M	L	Protect Enhance
		Cricket		Two standard quality squares, each with 12 wickets. Used mainly by Gloucester City Winget CC as a secondary site as well as some midweek play. Spare site capacity for an additional 90 matches per season.	Determine the requirement for two pitches onsite given demand in the area and current level of available capacity. Maximise use of available capacity through development of cricket and increase in demand.	Council ECB		S	L	
		Bowls		Good quality green used by Winget BC. Membership of circa 33 and therefore capacity for additional play. The ancillary facilities are rated as unacceptable and as such the Club is exploring funding options for a new clubhouse.	Support the Club in ensuring it retains the required knowledge base and resources including equipment to continue to maintain the green to the same standard. Support the Club, where possible, to apply for funding for a new/improved clubhouse.	Council Club		L	L	
60	University Of Gloucestershire (Oxstalls Campus)	AGP	University	Standard quality sand filled pitch with floodlighting. Owned by University of Gloucestershire. In excess of 10 years old and therefore requires resurfacing. Mainly used by student teams for training and BUCS hockey matches on Wednesday afternoons with no further capacity available. Plans for this pitch to be lost within current plans for development of the site to accommodate the University's Business School.	If this AGP is lost this will reduce provision in the City to three sand AGPs suitable for hockey. This will also create displacement of hockey teams which will need to be re accommodated. Loss of the pitch and displacement of teams would need to be fully mitigated by an improvement in pitch quality elsewhere and secured hockey access at an alternative site.	Council University FA EH RFU	Key centre (high)	S-M	H	-
61	Walls Sports And Social Club	Football	Sports Club	Two standard quality adult pitches, one overmarked by a youth 9v9 pitch and the other by mini 7v7 and 5v5 pitches. Used by several clubs, mainly Gloucester City FC junior section. Each pitch is overplayed by 0.5 match sessions per week due to intensified play from overmarked pitches.	Investigate potential to transfer some play to alternative pitches in order to reduce overplay. Also seek to better pitch quality through improved maintenance in order to help alleviate the level of overplay.	Sports Club FA	Local (low)	M	L	Protect Enhance

<sup>31</sup> Timescales: (S) -Short (1-2 years); (M) - Medium (3-5 years); (L) - Long (6+ years)

<sup>32</sup> (L) -Low - less than £50k; (M) -Medium - £50k-£250k; (H) -High £250k and above

**GLOUCESTER  
PLAYING PITCH STRATEGY**

Site ID	Site	Sport	Management	Current status	Recommended actions	Partners	Hierarchy tier (priority)	Timescales <sup>33</sup>	Cost <sup>34</sup>	Aim
62	Waterwells Sports Centre	Football	Parish Council	Two adult pitches, one youth 9v9 and one youth 7v7, all of which are poor quality and overplayed. The pitches drain poorly and the Club requires relevant equipment to spike the surface. Club aspiration for floodlighting.	Improve pitch quality/maintenance and link to establishing an equipment bank. In the longer term explore funding options for floodlighting when the Club gains promotion to a Step 6 league.	Parish Council Club FA	Local (medium)	S-M	M	Protect Enhance
		AGP		Small sized sand filled pitch operated by Quedgeley Parish Council. Used by Quedgeley Wanderers FC for training.	Ensure sufficient access for club training and existing unmet demand should further teams be created. Maximise commercial use from small sided social football use and other community groups.	Parish Council Club FA		L	L	
65	Kingsholm Square Lawn Tennis Club	Tennis	Sports Club	Two standard quality grass courts cut and marked by the Club which is limited to local community use.	Support the Club as required to improve court quality.	Club LTA	Local (low)	L	L-M	Protect Enhance
66	Gloucester Wotton Lawn Tennis Club	Tennis	Sports Club	Two grass and three tarmac courts all of standard quality, none of which are floodlit. The Club reports demand for a further two hard courts because the lack of floodlighting greatly affects ability to host home fixtures at the beginning of the season.	Explore opportunities for access to additional courts and/or potential to install floodlighting in order to increase winter court capacity.	LTA Club	Local (medium)	S-M	M	Protect Provide
69	EDF Energy	Bowls	Private	One good quality green owned and operated by the industry sports club. Not available for community use.	Continue to sustain green quality to accommodate current membership through required maintenance procedures	Industry	Local (low)	L	L	Protect
		Tennis		Two standard quality tarmac courts without floodlighting. Private industry sports club and therefore unavailable for wider community use.	Continue to maintain court quality and provide sporting provision for industry employees.	Industry LTA		L	L	
71	Abbeymead Primary School	Football	Council	Two youth 9v9 and two mini 5v5 pitches, all of which are standard quality. Used by Abbeymead Rovers FC junior section. 1.5 match sessions available for youth 9v9 at peak time, with a further 0.5 sessions available for mini 5v5.	Retain spare capacity in order to help sustain/improve pitch quality.	Council FA	Local (low)	L	L	Protect
72	Longlevens Infant School	Football	Council	Youth 9v9, mini 7v7 and mini 5v5 pitches all assessed as standard quality. Used by Longlevens Infants FC. All show spare capacity but only one match session for youth 9v9 play is available at peak time.	Retain spare capacity in order to help sustain/improve pitch quality.	Council FA	Local (low)	L	L	Protect
73	The Oval	Tennis	Council	Four poor quality tarmac courts without floodlighting. No recorded community use though it is likely that these courts are used infrequently for non-organised tennis.	Seek to improve court quality and ensure access for continued irregular use by local residents.	Council LTA	Local (medium)	M-L	M	Protect Enhance

<sup>33</sup> Timescales: (S) -Short (1-2 years); (M) - Medium (3-5 years); (L) - Long (6+ years)

<sup>34</sup> (L) -Low - less than £50k; (M) -Medium - £50k-£250k; (H) -High £250k and above

**GLOUCESTER  
PLAYING PITCH STRATEGY**

Site ID	Site	Sport	Management	Current status	Recommended actions	Partners	Hierarchy tier (priority)	Timescales <sup>35</sup>	Cost <sup>36</sup>	Aim
74	Kingsway Sports Field (Hardwicke & Quedgeley Harlequins RFC)	Football	Council	Poor quality adult football pitch currently unused and therefore available at peak time.	Improve quality and maximise use. Alternatively if low value site re provide pitches/investment in capacity at a hub site and retain as a reserve site.	Council FA	Key centre (medium)	S	L-M	Protect Enhance Provide
		Cricket		Standard quality square with 10 wickets, used by Hardwicke & Quedgeley CC. Available capacity for a further 29 matches per season.	Improve quality and maximise use to accommodate future demand.	Council ECB		M	M	
		Rugby union		Poor quality senior pitch used by Hardwicke & Quedgeley Harlequins for matches. Spare capacity of 0.5 match sessions available at senior peak time, or one match session at junior peak time.	In the short term retain spare capacity in order to sustain quality and in the longer term improve pitch quality/maintenance and maximise use.	Council RFU		S-M	L-M	
76	Innsworth Lane Sports Ground	Football	Sports Club	Site previously damaged by flooding and at the time of assessment was unused. However, has recently become operational again by Longlevens FC junior section. Changing facilities have since been restored, with room to mark youth 9v9 pitch upon further pitch remedial work.	Support the Club in sustaining quality through required standard of maintenance.	Council FA Club	Local (medium)	M	M	Provide
N/A	Gloucester Civil Service Club	Football Cricket Rugby union Bowls Tennis	Private	Multi sport site previously managed by the Civil Service Sports Council (CSSC), sold to Redrow Homes in 2010 and left to become disused.	Should planning permission be submitted for change of use seek like for like mitigation for loss of sports facilities.	Council FA ECB RFU LTA	-	L	H	Provide

<sup>35</sup> Timescales: (S) -Short (1-2 years); (M) - Medium (3-5 years); (L) - Long (6+ years)

<sup>36</sup> (L) -Low - less than £50k; (M) -Medium - £50k-£250k; (H) -High £250k and above



## **PART 6: DELIVER THE STRATEGY AND KEEP IT ROBUST AND UP TO DATE**

### ***Delivery***

The Playing Pitch Strategy seeks to provide guidance for maintenance/management decisions and investment made across Gloucester. By addressing the issues identified in the Assessment Report and using the strategic framework presented in this Strategy, the current and future sporting and recreational needs of Gloucester can be satisfied. The Strategy identifies where there is a deficiency in provision and identifies how best to resolve this in the future.

It is important that this document is used in a practical manner, is engaged with partners and encourages partnerships to be developed, to ensure that outdoor sports facilities are regarded as a vital aspect of community life and which contribute to the achievement of Council priorities.

The production of this Strategy should be regarded as the beginning of the planning process. The success of this Strategy and the benefits that are gained are dependent upon regular engagement between all partners involved and the adoption of a strategic approach.

Each member of the steering group should take the lead to ensure the PPS is used and applied appropriately within their area of work and influence. The role of the steering group should not end with the completion of the PPS document

To help ensure the PPS is well used it should be regarded as the key document within the study area guiding the improvement and protection of playing pitch provision. It needs to be the document people regularly turn to for information on the how the current demand is met and what actions are required to improve the situation and meet future demand. In order for this to be achieved the steering group need to have a clear understanding of how the PPS can be applied and therefore delivered.

The process of developing the PPS will hopefully have already resulted in a number of benefits that will help with its application and delivery. These may include enhanced partnership working across different agendas and organisations, pooling of resources along with strengthening relationships and understanding between different stakeholders and between members of the steering group and the sporting community. The drivers behind the PPS and the work to develop the recommendations and action plan will have also highlighted, and helped the steering group to understand, the key areas to which it can be applied and how it can be delivered.

### ***Monitoring and updating***

It is important that there is regular annual monitoring and review against the actions identified in the Strategy. This monitoring should be led by the local authority and supported by all members of, and reported back to, the steering group. Understanding and learning lessons from how the PPS has been applied should also form a key component of monitoring its delivery. This should form an on-going role of the steering group.

As a guide, if no review and subsequent update has been carried out within three years of the PPS being signed off by the steering group, then Sport England and the NGBs would consider the PPS and the information on which it is based to be out of date.

## GLOUCESTER PLAYING PITCH STRATEGY

---

The nature of the supply and in particular the demand for playing pitches will likely to have changed over the three years. Therefore, without any form of review and update within this time period it would be difficult to make the case that the supply and demand information and assessment work is sufficiently robust.

Ideally the PPS could be reviewed on an annual basis from the date it is formally signed off by the steering group. This will help to maintain the momentum and commitment that would have been built up when developing the PPS. Taking into account the time to develop the PPS this should also help to ensure that the original supply and demand information is no more than two years old without being reviewed.

An annual review should not be regarded as a particularly resource intensive task. However, it should highlight:

- ◀ How the delivery of the recommendations and action plan has progressed and any changes required to the priority afforded to each action (e.g. the priority of some may increase following the delivery of others)
- ◀ How the PPS has been applied and the lessons learnt
- ◀ Any changes to particularly important sites and/or clubs in the area (e.g. the most used or high quality sites for a particular sport) and other supply and demand information, what this may mean for the overall assessment work and the key findings and issues
- ◀ Any development of a specific sport or particular format of a sport
- ◀ Any new or emerging issues and opportunities.

Once the PPS is complete the role of the steering group should evolve so that it:

- ◀ Acts as a focal point for promoting the value and importance of the PPS and playing pitch provision in the area
- ◀ Monitors, evaluates and reviews progress with the delivery of the recommendations and action plan
- ◀ Shares lessons learnt from how the PPS has been used and how it has been applied to a variety of circumstances
- ◀ Ensures the PPS is used effectively to input into any new opportunities to secure improved provision and influence relevant programmes and initiatives
- ◀ Maintains links between all relevant parties with an interest in playing pitch provision in the area;
- ◀ Reviews the need to update the PPS along with the supply and demand information and assessment work on which it is based. Further to review the group should either:
  - ◀ Provide a short annual progress and update paper;
  - ◀ Provide a partial review focussing on particular sport, pitch type and/or sub area; or
  - ◀ Lead a full review and update of the PPS document (including the supply and demand information and assessment details).

Alongside the regular steering group meetings a good way to keep the strategy up to date and maintain relationships may be to hold annual sport specific meetings with the pitch sport NGBs and other relevant parties. These meetings could look to update the key supply and demand information, if necessary amend the assessment work, track progress with implementing the recommendations and action plan and highlight any new issues and opportunities.



## GLOUCESTER PLAYING PITCH STRATEGY

---

These meetings could be timed to fit with the annual affiliation process undertaken by the NGBs which would help to capture any changes in the number and nature of sports clubs in the area. Other information that is already collected on a regular basis such as pitch booking records for local authority and other sites could be fed into these meetings. The NGBs will also be able to indicate any further performance quality assessments that have been undertaken within the study area. Discussion with the league secretaries may also indicate annual league meetings which it may be useful to attend to pick up any specific issues and/or enable a review of the relevant club details to be undertaken.

The steering group should regularly review and refresh area by area plans taking account of any improvements in pitch quality (and hence increases in pitch capacity) and also any new negotiations for community use of education sites in the future.


It is important that the Council maintains the data contained with the accompanying Playing Pitch Database. This will enable it to refresh and update area by area plans on a regular basis. The accompanying databases are intended to be refreshed on a season by season basis and it is important that there is cross-departmental working, including for example, grounds maintenance and sports development departments, to ensure that this is achieved and that results are used to inform subsequent annual sports facility development plans. Results should be shared with partners via a consultative mechanism.

# GLOUCESTER PLAYING PITCH STRATEGY

## Checklist

To help ensure the PPS is delivered and is kept robust and up to date, the steering group can refer to the new methodology Stage E Checklist: Deliver the strategy and keep it robust and up to date:

<http://www.sportengland.org/facilities-planning/planning-for-sport/planning-tools-and-guidance/playing-pitch-strategy-guidance/>

Stage E: Deliver the strategy and keep it robust and up to date	Tick 	
	Yes	Requires Attention
<b>Step 9: Apply &amp; deliver the strategy</b>		
1. Are steering group members clear on how the PPS can be applied across a range of relevant areas?		
2. Is each member of the steering group committed to taking the lead to help ensure the PPS is used and applied appropriately within their area of work and influence?		
3. Has a process been put in place to ensure regular monitoring of how the recommendations and action plan are being delivered and the PPS is being applied?		
<b>Step 10: Keep the strategy robust &amp; up to date</b>		
1. Has a process been put in place to ensure the PPS is kept robust and up to date?		
2. Does the process involve an annual update of the PPS?		
3. Is the steering group to be maintained and is it clear of its on-going role?		
4. Is regular liaison with the NGBs and other parties planned?		
5. Has all the supply and demand information been collated and presented in a format (i.e. single document that can be filtered accordingly) that will help people to review it and highlight any changes?		
6. Have any changes made to the Active Places Power data been fed back to Sport England?		

## APPENDIX ONE: STRATEGIC CONTEXT

The following section outlines a series of national, regional and local policies pertaining to the study and which will have an important influence on the Strategy.

### National context

The provision of high quality and accessible community outdoor sports facilities at a local level is a key requirement for achieving the targets set out by the Government and Sport England. It is vital that this strategy is cognisant of and works towards these targets in addition to local priorities and plans.

### *Sport England: A Sporting Habit for Life (2012-2017)*

In 2017, five years after the Olympic Games, Sport England aspires to transforming sport in England so that it is a habit for life for more people and a regular choice for the majority. Launched in January 2012 the strategy sets out how Sport England will invest over one billion pounds of National Lottery and Exchequer funding during the five year plan period. The investment will be used to create a lasting community sport legacy by growing sports participation at the grassroots level following the 2012 London Olympics. The strategy will:

- ◀ See more people starting and keeping a sporting habit for life
- ◀ Create more opportunities for young people
- ◀ Nurture and develop talent
- ◀ Provide the right facilities in the right places
- ◀ Support local authorities and unlock local funding
- ◀ Ensure real opportunities for communities

The vision is for England to be a world leading sporting nation where many more people choose to play sport. There are five strategic themes including:

- ◀ Maximise value from current NGB investment
- ◀ Places, People, Play
- ◀ Strategic direction and market intelligence
- ◀ Set criteria and support system for NGB 2013-17 investment
- ◀ Market development

The aim by 2017 is to ensure that playing sport is a lifelong habit for more people and a regular choice for the majority. A specific target is to increase the number of 14 to 25 year olds playing sport. To accomplish these aims the strategy sets out a number of outcomes:

- ◀ 4,000 secondary schools in England will be offered a community sport club on its site with a direct link to one or more NGBs, depending on the local clubs in a school's area.
- ◀ County sports partnerships will be given new resources to create effective links locally between schools and sport in the community.
- ◀ All secondary schools that wish to do so, will be supported to open up, or keep open, their sports facilities for local community use and at least a third of these will receive additional funding to make this happen.
- ◀ At least 150 further educational colleagues will benefit from a full time sports professional who will act as a College Sport Maker.
- ◀ Three quarters of university students aged 18-24 will get the chance to take up a new sport or continue playing a sport they played at school or college.
- ◀ A thousand of our most disadvantaged local communities will get a Door Step Club.

## GLOUCESTER PLAYING PITCH STRATEGY

---

- ◀ Two thousand young people on the margins of society will be supported by the Dame Kelly Holmes Legacy Trust into sport and to gain new life skills.
- ◀ Building on the success of the Places People Play, a further £100 million will be invested in facilities for the most popular sports.
- ◀ A minimum of 30 sports will have enhanced England Talent Pathways to ensure young people and others fulfil their potential.

### ***National Planning Policy Framework***

The National Planning Policy Framework (NPPF) sets out planning policies for England. It details how these changes are expected to be applied to the planning system. It also provides a framework for local people and their councils to produce distinct local and neighbourhood plans, reflecting the needs and priorities of local communities.

The NPPF states the purpose of the planning system is to contribute to the achievement of sustainable development. It identifies that the planning system needs to focus on three themes of sustainable development: economic, social and environmental. A presumption in favour of sustainable development is a key aspect for any plan-making and decision-taking processes. In relation to plan-making the NPPF sets out that Local Plans should meet objectively assessed needs.

The 'promoting healthy communities' theme identifies that planning policies should be based on robust and up-to-date assessments of the needs for open space, sports and recreation facilities and opportunities for new provision. Specific needs and quantitative or qualitative deficiencies or surpluses in local areas should also be identified. This information should be used to inform what provision is required in an area.

As a prerequisite the NPPF states existing open space, sports and recreation buildings and land, including playing fields, should not be built on unless:

- ◀ An assessment has been undertaken, which has clearly shown that the open space, buildings or land is surplus to requirements.
- ◀ The loss resulting from the proposed development would be replaced by equivalent or better provision in terms of quantity and quality in a suitable location.
- ◀ The development is for alternative sports and recreational provision, the needs for which clearly outweigh the loss.

In order for planning policies to be 'sound' local authorities are required to carry out a robust assessment of need for open space, sport and recreation facilities.

### ***The FA National Game Strategy (2011 – 2015)***

The Football Association's (FA) National Game Strategy provides a strategic framework that sets out key priorities, expenditure proposals and targets for the national game (i.e., football) over a four year period. The main issues facing grassroots football are identified as:

- ◀ Growth and retention (young and adult players)
- ◀ Raising standards and behaviour
- ◀ Better players
- ◀ Running the game
- ◀ Workforce
- ◀ Facilities

## GLOUCESTER PLAYING PITCH STRATEGY

---

'The National Game Strategy' reinforces the urgent need to provide affordable, new and improved facilities in schools, clubs and on local authority sites. Over 75% of football is played on public sector facilities. The leisure budgets of most local authorities have been reduced over recent years, resulting in decaying facilities that do not serve the community and act as a disincentive to play football. The loss of playing fields has also been well documented and adds to the pressure on the remaining facilities to cope with the demand, especially in inner city and urban areas.

The growth of the commercial sector in developing custom built five-a-side facilities has changed the overall environment. High quality, modern facilities provided by Powerleague, Goals and playfootball.net for example, have added new opportunities to participate and prompted a significant growth in the number of five-a-side teams in recent years.

### ***The FA National Facilities Strategy (2013 – 2015)***

The National Facilities Strategy sets out the FA's long term vision for development of facilities to support the National Game. It aims to address and reflect the facility needs of football within the National Game. The National Game is defined as all non-professional football from Steps 1-7 of the National League System down to recreational football played on open public space. The role of facilities will be crucial in developing the game in England. One of the biggest issues raised from 'the Big Grassroots Football Survey' by that of 84% respondents, was 'poor facilities'.

The FA's vision for the future of facilities in England is to build, protect and enhance sustainable football facilities to improve the experience of the nation's favourite game. It aims to do this by:

- ◀ Building - Provide new facilities and pitches in key locations to FA standards in order to sustain existing participation and support new participation.
- ◀ Protecting - Ensure that playing pitches and facilities are protected for the benefit of current and future participants.
- ◀ Enhancing - Invest in existing facilities and pitches, ensuring that participation in the game is sustained as well as expanded.

The Strategy commits to delivering in excess of £150m (through Football Foundation) into facility improvements across the National Game in line with identified priorities:

- ◀ Natural grass pitches improved – target: 100
- ◀ A network of new AGPs built – target 100
- ◀ A network of refurbished AGPs – target 150
- ◀ On selected sites, new and improved changing facilities and toilets
- ◀ Continue a small grants programme designed to address modest facility needs of clubs
- ◀ Ongoing support with the purchase and replacement of goalposts

It also commits to:

- ◀ Direct other sources of investment into FA facility priorities
- ◀ Communicate priorities for investment across the grassroots game on a regular basis
- ◀ Work closely with Sport England, the Premier League and other partners to ensure that investment is co-ordinated and targeted

## GLOUCESTER PLAYING PITCH STRATEGY

---

### ***Champion Counties – England and Wales Cricket Board (ECB) Strategic Plan (2013 – 2017)***

“Champion Counties” - continues to focus on the four pillars, as identified in the ECB’s previous strategy: “Grounds to Play”. The pillars are:

- ◀ Energising people and partnerships through effective leadership and governance
- ◀ Building a Vibrant domestic game through operational excellence and delivering a competition structure with appointment to view
- ◀ Engaging participants through the maintenance of existing facilities, supporting club/school links , supporting volunteers and expanding women’s and disabilities cricket
- ◀ Delivering Successful England teams and world class global events

The key measures for the life span of the plan are as follows:-

- ◀ Increase the subset of participation measured by Sport England’s Active People Survey from 183,400 to 197,500.
- ◀ Increase attendances at LV= CC, YB50 and FLT20 by 200,000.
- ◀ Complete sponsorship and broadcasting agreements through 2019.
- ◀ Win the World Test Championship and Women’s World Cup in 2017.
- ◀ Win The Ashes and World Cup in 2015.
- ◀ Expand the number of clubs participating in NatWest Cricket Force from 2,000 to 2,200.
- ◀ Complete co-operation agreements for each of the 39 County Boards with their First Class County or Minor County partner.
- ◀ Deliver two world class global events in 2017 which exceed budget and exceed customer satisfaction targets.
- ◀ Increase the number of cricket’s volunteers to 80,000 by 2017.
- ◀ Expand the number of participants in women’s and disabilities cricket by 10% by 2017.
- ◀ Award all Major Matches through 2019 by December 2014.
- ◀ To increase the number of TwelfthMan members from 220,000 to 250,000 by 2017.
- ◀ Complete an approved Community Engagement programme with all 18 First Class Counties and MCC.
- ◀ Provide First Class Counties with total fee payments of £144m between 2014 and 2017.
- ◀ For each £1 provided in facility grants through the Sport England Whole Sport Plan grant programme ensure a multiplier of 3 with other funding partners.
- ◀ Provide a fund of £8.1m of capital investment to enhance floodlights, sightscreens, replay screens, power sub-stations and broadcasting facilities at First Class County venues.
- ◀ Provide an interest-free loan fund to community clubs of £10 million.
- ◀ Leverage the 2014 tour by India to engage with a minimum of 10,000 cricket supporters of Asian origin. Qualify and engage 50 Level 4 coaches to support the development of professional cricketers.
- ◀ Expand the number of coaches who have received teacher level 1, 2 or 3 qualifications to 50,000.
- ◀ Deliver an annual fixture for the Unicorns against a touring (Full, A or U19) ICC member nation.
- ◀ Provide a fund of £2 million for community clubs to combat the impact of climate change.
- ◀ Introduce a youth T20 competition engaging 500 teams by 2017.

## GLOUCESTER PLAYING PITCH STRATEGY

---

### ***The Rugby Football Union National Facilities Strategy (2013-2017)***

The RFU National Facility Strategy 2013-2017 provides a framework for development of high-quality, well-managed facilities that will help to strengthen member clubs and grow the game in communities around them. In conjunction with partners, this strategy will assist and support clubs and other organisations, so that they can continue to provide quality opportunities for all sections of the community to enjoy the game. It sets out the broad facility needs of the sport and identifies investment priorities to the game and its key partners. It identifies that with 470 grass root clubs and 1500 players there is a continuing need to invest in community club facilities in order to:

- ◀ Create a platform for growth in club rugby participation and membership, especially with a view to exploiting the opportunities afforded by RWC 2015.
- ◀ Ensure the effectiveness and efficiency of rugby clubs, through supporting not only their playing activity but also their capacity to generate revenue through a diverse range of activities and partnerships.

In summary the priorities for investment which have met the needs of the game for the Previous period remain valid:

- ◀ Increase the provision of changing rooms and clubhouses that can sustain concurrent adult and junior male and female activity at clubs
- ◀ Improve the quality and quantity of natural turf pitches and floodlighting
- ◀ Increase the provision of artificial grass pitches that deliver wider game development

It is also a high priority for the RFU to target investment in the following:

- ◀ Upgrade and transform social, community and catering facilities, which can support the generation of additional revenues
- ◀ Facility upgrades, which result in an increase in energy-efficiency, in order to reduce the running costs of clubs
- ◀ Pitch furniture, including rugby posts and pads, pitch side spectator rails and grounds maintenance equipment

### ***The Rugby Football League Facility Strategy***

The RFL's Facilities Strategy was published in 2011. The following themes have been prioritised:

- ◀ Clean, Dry, Safe & Playable
- ◀ Sustainable clubs
- ◀ Environmental Sustainability
- ◀ Geographical Spread
- ◀ Non-club Facilities

The RFL Facilities Trust website [www.rffacilitiestrust.co.uk](http://www.rffacilitiestrust.co.uk) provides further information on:

- ◀ The RFL Community Facility Strategy
- ◀ Clean, Dry, Safe and Playable Programme
- ◀ Pitch Size Guidance
- ◀ The RFL Performance Standard for Artificial Grass Pitches
- ◀ Club guidance on the Annual Preparation and Maintenance of the Rugby League Pitch



## GLOUCESTER PLAYING PITCH STRATEGY

---

Further to the 2011 Strategy detail on the following specific programmes of particular relevance to pitches and facility planning are listed below and can be found via the trust link (see above):

- ◀ The RFL Pitch Improvement Programme 2013 – 2017
- ◀ Clean, Dry and Safe programmes 2013 - 2017

### **England Hockey (EH) - A Nation Where Hockey Matters (2013-2017)**

EH has a clear vision, a powerful philosophy and five core objectives that all those who have a role in advancing Hockey can unite behind. With UK Sport and Sport England's investment, and growing commercial revenues, EH are ambitious about how they can take the sport forward in Olympic cycles and beyond.

*“The vision is for England to be a ‘Nation Where Hockey Matters’. A nation where hockey is talked about at dinner tables, playgrounds and public houses, up and down the country. A nation where the sport is on the back pages of our newspapers, where children dream of scoring a goal for England’s senior hockey team, and where the performance stirs up emotion amongst the many, not the few”*

England Hockey aspires to deepen the passion of those who play, deliver and follow sport by providing the best possible environments and the best possible experiences. Whilst reaching out to new audiences by making the sport more visible, available and relevant and through the many advocates of hockey.

Underpinning all this is the infrastructure which makes the sport function. EH understand the importance of volunteers, coaches, officials, clubs and facilities. The more inspirational people can be, the more progressive Hockey can be and the more befitting the facilities can be, the more EH will achieve. The core objectives are as follows:

- ◀ Grow our Participation
- ◀ Deliver International Success
- ◀ Increase our Visibility
- ◀ Enhance our Infrastructure
- ◀ Be a strong and respected Governing Body

England Hockey has a Capital Investment Programme (CIP) that is planned to lever £5.6 million investment into hockey facilities over the next four years, underpinned by £2m million from the National Governing Body. With over 500 pitches due for refurbishment in the next 4-8 years, there will be a large focus placed on these projects through this funding stream. The current level of pitches available for hockey is believed to be sufficient for the medium term needs, however in some areas, pitches may not be in the right places in order to maximize playing opportunities

### ***'The right pitches in the right places'<sup>37</sup>***

In 2012, EH released its facility guidance which is intended to assist organisations wishing to build or protect hockey pitches for hockey. It identifies that many existing hockey AGPs are nearing the end of their useful life as a result of the installation boom of the 90's. Significant investment is needed to update the playing stock and protect the sport against inappropriate surfaces for hockey as a result of the rising popularity of AGPs for a number of sports. EH is seeking to invest in, and endorse clubs and hockey providers which have a sound understanding of the following:

- ◀ Single System – clubs and providers which have a good understanding of the Single System and its principles and are appropriately places to support the delivery.
- ◀ ClubsFirst accreditation – clubs with the accreditation are recognised as producing a safe effective and child friendly hockey environment
- ◀ Sustainability – hockey providers and clubs will have an approved development plan in place showing their commitment to developing hockey, retaining members and providing an insight into longer term goals. They will also need to have secured appropriate tenure.

### ***2015-2018 British Tennis Strategy***

The new strategy is presented in a concise one page framework that includes key strategies relating to three participation "focus" areas, six participation "drivers" and three participation "enablers". To achieve success, the 12 strategy areas will need to work interdependently to stem the decline and unlock sustainable growth:

The three participation "focus" areas are where tennis is consumed:

1. Deliver great service to CLUBS
2. Build partnerships in the COMMUNITY, led by parks
3. Enhance the tennis offer in EDUCATION

The six participation "drivers" are the areas that will make the biggest difference where tennis is consumed. They must all be successful on a standalone and interconnected basis and include:

1. Becoming more relevant to COACHES
2. Refocusing on RECREATIONAL COMPETITION
3. Providing results orientated FACILITY INVESTMENT
4. Applying best in class MARKETING AND PROMOTION
5. JUMP STARTING THE PEAK SUMMER SEASON
6. Establishing a "no compromise" HIGH PERFORMANCE programme with focus.

The final layer is comprised of three participation "enablers" that underpin our ability to be successful. These enablers are rooted in how the LTA will get better; how the entire network of 4 / 17/03/2015 partners must be harnessed to work together and the need to raise more financial resources to fund our sport's turnaround.

---

37

<http://englandhockey.co.uk/page.asp?section=1143&sectionTitle=The+Right+Pitches+in+the+Right+Places>

# GLOUCESTER

## PLAYING PITCH STRATEGY

---

They include:

1. Becoming a more effective and efficient LTA
2. Harnessing the full resource network
3. Generating new revenue

For further information and more detail on the framework please go to <http://www.lta.org.uk/about-the-lta/structure-vision>

### ***Bowls England: Strategic Plan 2014-2017***

Bowls England will provide strong leadership and work with its stakeholders to support the development of the sport of bowls in England for this and future generations.

The overall vision of Bowls England is to:

- ◀ Promote the sport of outdoor flat green bowls.
- ◀ Recruit new participants to the sport of outdoor flat green bowls.
- ◀ Retain current and future participants within the sport of flat green bowls.

In order to ensure that this vision is achieved, ten key performance targets have been created, which will underpin the work of Bowls England up until 31<sup>st</sup> March 2017.

- ◀ 115,000 individual affiliated members.
- ◀ 1,500 registered coaches.
- ◀ Increase total National Championship entries by 10%.
- ◀ Increase total national competition entries by 10%.
- ◀ Medal places achieved in 50% of events at the 2016 World Championships.
- ◀ 35 county development plans in place and operational.
- ◀ County development officer appointed by each county association.
- ◀ National membership scheme implemented with 100% uptake by county associations.
- ◀ Secure administrative base for 1st April 2017.
- ◀ Commercial income to increase by 20%.

Despite a recent fall in affiliated members, and a decline in entries into National Championships over the last five years, Bowls England believes that these aims will be attained by following core values. The intention is to:

- ◀ Be progressive.
- ◀ Offer opportunities to participate at national and international level.
- ◀ Work to raise the profile of the sport in support of recruitment and retention.
- ◀ Lead the sport.
- ◀ Support clubs and county associations.

# GLOUCESTER PLAYING PITCH STRATEGY

## APPENDIX TWO: FUNDING PLAN

### Funding opportunities

In addition to using the planning system to lever in contributions through Section 106 or CIL, it is recognised that external partner funding will need to be sought to deliver much of the action plan. Although seeking developer contributions in applicable situations and other local funding/community schemes could go some way towards meeting deficiencies and/or improving provision, other potential/match sources of funding should be investigated. Below is a list of current funding sources that are relevant for community improvement projects involving sports facilities.

Awarding body	Description
Big Lottery Fund <a href="http://www.biglotteryfund.org.uk/">http://www.biglotteryfund.org.uk/</a>	Big invests in community groups and to projects that improve health, education and the environment
Sport England : <ul style="list-style-type: none"> <li>• Improvement Fund</li> <li>• Sportsmatch</li> <li>• Small Grants</li> <li>• Protecting Playing Fields</li> <li>• Inspired Facilities</li> <li>• Strategic Facilities Fund</li> </ul> <a href="http://www.sportengland.org/funding.aspx">http://www.sportengland.org/funding.aspx</a> <a href="http://www.sportengland.org/funding/our-different-funds/strategic-facilities/">http://www.sportengland.org/funding/our-different-funds/strategic-facilities/</a>	Sport England is keen to marry funding with other organisations that provide financial support to create and strengthen the best sports projects. Applicants are encouraged to maximise the levels of other sources of funding, and projects that secure higher levels of partnership funding are more likely to be successful.
Football Foundation <a href="http://www.footballfoundation.org.uk/">http://www.footballfoundation.org.uk/</a>	This trust provides financial help for football at all levels, from national stadia and FA Premier League clubs down to grass-roots local development.
Rugby Football Foundation - The Grant Match Scheme <a href="http://www.rugbyfootballfoundation.org">www.rugbyfootballfoundation.org</a>	The Grant Match Scheme provides easy-to-access grant funding for playing projects that contribute to the recruitment and retention of community rugby players. Grants are available on a 'match funding' 50:50 basis to support a proposed project. Projects eligible for funding include: 1. Pitch Facilities – Playing surface improvement, pitch improvement, rugby posts, floodlights. 2. Club House Facilities – Changing rooms, shower facilities, washroom/lavatory, and measures to facilitate segregation (e.g. women, juniors). 3. Equipment – Large capital equipment, pitch maintenance capital equipment (e.g. mowers).
EU Life Fund <a href="http://ec.europa.eu/environment/funding/intro_en.htm">http://ec.europa.eu/environment/funding/intro_en.htm</a>	LIFE is the EU's financial instrument supporting environmental and nature conservation projects throughout the EU.
EH Capital Investment Programme (CIP)	The CIP fund is for the provision of new pitches and re-surfacing of old AGPs. It forms part of EH's 4 year Whole Sport's Plan.

## GLOUCESTER PLAYING PITCH STRATEGY

Awarding body	Description
National Hockey Foundation <a href="http://www.thenationalhockeyfoundation.com/">http://www.thenationalhockeyfoundation.com/</a>	The Foundation primarily makes grants to a wide range of organisations that meet one of our chosen areas of focus: Young people and hockey. Enabling the development of hockey at youth or community level. Smaller Charities.

### ***Protecting Playing Fields***

SE launched a funding programme; Protecting Playing Fields (PPF ) as part of its Places People Play Olympic legacy mass participation programme and is investing £10 million of National Lottery funding in community sports projects over the next three years (2011-2014).

The programme is being delivered via five funding rounds (with up to £2 million being awarded to projects in each round). Its focus is on protecting and improving playing fields and developing community sport. It will fund capital projects that create, develop and improve playing fields for sporting and community use and offer long term protection of the site for sport. Projects are likely to involve the construction of new pitches or improvement of existing ones that need levelling or drainage works.

Sport England's 'Inspired Facilities' funding programme will be delivered via five funding rounds and is due to launch in Summer 2011 where clubs, community and voluntary sector groups and local authorities can apply for grants of between £25k and £150k where there is a proven local need for a facility to be modernised, extended or modified to open up new sporting opportunities.

The programmes three priorities are:

- ◀ Organisations that haven't previously received a Sport England Lottery grant of over £10k.
- ◀ Projects that are the only public sports facility in the local community.
- ◀ Projects that offer local opportunities to people who do not currently play sport.

Besides this scheme providing an important source of funding for potential voluntary and community sector sites, it may also providing opportunities for Council to access this funding particularly in relation to resurfacing the artificial sports surfaces

### ***Strategic Facilities Fund***

Facilities are fundamental in providing more people with the opportunity to play sport. The supply of the right facilities in the right areas is key to getting more people to play sport. Sport England recognises the considerable financial pressures that local authorities are currently under and the need to strategically review and rationalise leisure stock so that cost effective and financially sustainable provision is available in the long-term. Sport England has a key role to play in the sector, from influencing the local strategic planning and review of sports facility provision to investing in major capital projects of strategic importance.

## GLOUCESTER PLAYING PITCH STRATEGY

---

The Strategic Facilities Fund will direct capital investment into a number of key local authority projects that are identified through a strategic needs assessment and that have maximum impact on growing and sustaining community sport participation. These projects will be promoted as best practice in the delivery of quality and affordable facilities, whilst demonstrating long-term operational efficiencies. The fund will support projects that bring together multiple partners, including input from the public and private sectors and national governing bodies of sport (NGBs). The fund is also designed to encourage applicants and their partners to invest further capital and revenue funding to ensure sustainability. Sport England has allocated a budget of circa £30m of Lottery funding to award through this fund (2013-17).

Key features which applications must demonstrate are:

- ◀ A robust needs and evidence base which illustrates the need for the project and the proposed facility mix
- ◀ Strong partnerships which will last beyond the initial development of the project and underpin the long-term sustainability of the facility
- ◀ Multi-sport provision and activity that demonstrates delivery against NGB local priorities
- ◀ A robust project plan from inception to completion with achievable milestones and timescales.

Lottery applications will be invited on a solicited-only basis and grants of between £500,000 and £2,000,000 will be considered.

The Strategic Facilities Fund will prioritise projects that:

- ◀ Are large-scale capital developments identified as part of a local authority sports facility strategic needs assessment/rationalisation programme and that will drive a significant increase in community sports participation
- ◀ Demonstrate consultation/support from two or more NGBs and delivery against their local priorities
- ◀ Are multi-sport facilities providing opportunities to drive high participant numbers
- ◀ Are a mix of facility provision (indoor and/or outdoor) to encourage regular & sustained use by a large number of people
- ◀ Offer an enhancement, through modernisation, to existing provision and/or new build facilities
- ◀ Have a long-term sustainable business plan attracting public and private investment
- ◀ Show quality in design, but are fit for purpose to serve the community need
- ◀ Have effective and efficient operating models, combined with a commitment to development programmes which will increase participation and provide talent pathways.

Projects will need to demonstrate how the grant will deliver against Sport England's strategic priorities. The funding available is for the development of the capital infrastructure, which can contribute to the costs of new build, modernisation or refurbishment and purchasing of major fixed equipment as part of the facility development.

# GLOUCESTER PLAYING PITCH STRATEGY

---

## Funder's requirements

Below is a list of funding requirements that can typically be expected to be provided as part of a funding bid, some of which will fall directly out of the Playing Pitch Strategy:

- ◀ Identify need (i.e., why the Project is needed) and how the Project will address it.
- ◀ Articulate what difference the Project will make.
- ◀ Identify benefits, value for money and/or added value.
- ◀ Provide baseline information (i.e., the current situation).
- ◀ Articulate how the Project is consistent with local, regional and national policy.
- ◀ Financial need and project cost.
- ◀ Funding profile (i.e., Who's providing what? Unit and overall costs).
- ◀ Technical information and requirements (e.g., planning permission).
- ◀ Targets, outputs and/or outcomes (i.e., the situation after the Project/what the Project will achieve)
- ◀ Evidence of support from partners and stakeholders.
- ◀ Background/essential documentation (e.g., community use agreement).
- ◀ Assessment of risk.

## Indicative costs

The indicative costs of implementing key elements of the Action Plan can be found on the Sport England website:

<http://www.sportengland.org/facilities-planning/tools-guidance/design-and-cost-guidance/cost-guidance/>

These costs are broken down into two areas:

- ◀ Facility capital costs
- ◀ Lifecycle costs

## Facility capital costs

Facility capital costs are calculated using estimates of what it typically costs to build modern sports facilities, including fees and external works.

Naturally, varying conditions, inflation and regional adjustments.

Costs are updated regularly in conjunction with information provided by the BCIS (Building Cost Information Service) and other Quantity Surveyors.

The document is often referred to as the Planning Kitbag costs as the figures are often used by Planners and Developers when reviewing potential Planning Contributions to site developments.



## **Facility life cycle costs**

Life cycle costs are how much it costs to keep a facility open and fit-for-purpose during its lifetime.

It includes costs for major replacement and planned preventative maintenance (day to day repairs).

The costs are expressed as a percentage of the capital cost.

You should not underestimate the importance of regular maintenance and the expense in maintaining a facility throughout its life.

# GLOUCESTER PLAYING PITCH STRATEGY

## APPENDIX THREE: FOOTBALL AGP SCENARIO

Improving pitch quality is one way to increase the capacity at sites. Given the cost of doing such work and the continued maintenance required (and associated costs) alternatives need to be considered that can offer a more sustainable model for the future of football. The alternative to grass pitches is the use of AGPs for competitive matches and this is something that the FA is supporting, particularly for mini football.

*Summary of competitive teams playing on grass pitches in Gloucester*

Analysis area	No. of teams playing				
	Adult	Youth 11v11	Youth 9v9	Mini 7v7	Mini 5v5
GLOUCESTER	55	45	23	25	19

### ***If all mini and youth football played on AGPs***

In order to test the scenario a programme of play for AGPs has been created based on the current peak time demand for mini/youth pitches in Gloucester. In terms of programming; one full size AGP can accommodate four 5v5 pitches, two 7v7 pitches, two 9v9 pitches or one youth 11v11 pitch and any one time.

### ***Mini 5v5 & 7v7 combined programme (Saturday)***

Time slot	Matches per full size AGP	Total teams/matches
9.30am – 10.30am	8 x mini (5v5)	19/10
10.30am – 11.30am		
11.30am – 12.30pm	4 x mini (7v7)	25/13
12.30pm – 1.30pm		

### ***How many AGPs would be required if all mini teams were moved to 3G?***

There are currently 44 mini teams in Gloucester which would require four AGPs if all were to play in the time slots highlighted in the table above.

### ***Youth 9v9 programme (Saturday)***

Time slot	Matches per full size AGP	Total teams/matches
9.00am – 11am	2 x youth (9v9)	23/12
11am – 13.00pm	2 x youth (9v9)	

### ***How many AGPs would be required if all youth 9v9 teams were moved to 3G?***

There are currently 23 youth 9v9 teams which would require three AGPs on a Saturday to accommodate 9v9 play in the time slots highlighted in the table above.

# GLOUCESTER PLAYING PITCH STRATEGY

## APPENDIX FOUR: RUGBY UNION TRAINING SCENARIO

The high level of overplay at several rugby union club sites comes as a result of training demand concentrated on one pitch which is typically the only one with floodlights, therefore receiving a disproportionate level of use in relation to others. Designated pitches used for both training and matches in such manner are typically poor quality and receive little rest time due to persistent training use midweek, including through the winter when weather conditions are poor, causing long standing damage.

Removing some or all of the training demand from floodlit pitches onto other areas such as a designated floodlit training area away from match pitches or a World Rugby Reg 22 AGP would serve to both reduce the level of overplay and increase the potential to make effective improvements to pitch quality where required.

As a guide, the RFU has set a standard number of matches that each pitch should be able to accommodate. Capacity is based upon a basic assessment of the drainage system and maintenance programme as follows:

		Maintenance		
		Poor (M0)	Adequate (M1)	Good (M2)
<b>Drainage</b>	Natural Inadequate (D0)	0.5	1.5	2
	Natural Adequate or Pipe Drained (D1)	1.5	2	3
	Pipe Drained (D2)	1.75	2.5	3.25
	Pipe and Slit Drained (D3)	2	3	3.5

This guide should only be used as a very general measure of potential pitch capacity and does not account for specific circumstances at time of use and assumes average rainfall and an appropriate end of season rest and renovation programme.

The figures are based upon a pipe drained system at 5m centres that has been installed in the last eight years and a slit drained system at 1m centres completed in the last five years.

This scenario applies the above pitch ratings against the actual level of weekly play recorded to determine a capacity rating as follows:

<b>Potential capacity</b>	Play is below the level the site could sustain
<b>At capacity</b>	Play matches the level the site can sustain
<b>Overused</b>	Play exceeds the level the site can sustain

Please refer to the Assessment Report for further detail and explanation.

## GLOUCESTER PLAYING PITCH STRATEGY

Summary of rugby union club site capacity with the removal of current training demand from senior floodlit match pitches

Site ID	Site name	Quality rating	Match equivalent sessions <sup>38</sup> (per week)	Site capacity (sessions per week)	Capacity rating	Training demand (match sessions per week)	Comments	Projected capacity
3	Armscroft Park (Gloucester Old Boys RFC)	M0 / D1 (Poor)	1	3	2	-	-	2
13	Coney Hill RFC	M0 / D0 (Poor)	5	0.5	4.5	3.5	Senior and junior midweek training and Sunday PM junior training	1
			0	0.5	0.5	-	-	0.5
20	Elmbridge Playing Field (Old Richians RFC)	M0 / D1 (Poor)	4.25 +2	3	3.25	1.5	Junior training at weekends in the absence of a fixture	1.75
24	Gloucester Academy (Old Centralians RFC)	M0 / D0 (Poor)	1	0.5	0.5	-	-	0.5
25	Gloucester All Blues RFC	M0 / D0 (Poor)	2.5	1	1.5	2	Senior midweek training	0.5
29	Gordon League RFC	M0 / D1 (Poor)	1.5	3	1.5	-	-	1.5
			4	1.5	2.5	3	Senior midweek training and weekend training from County squad and mini section	0.5
33	High School For Girls	M0 / D1 (Poor)	2.5	1.5	1	1	Junior midweek training	-

## GLOUCESTER PLAYING PITCH STRATEGY

Site ID	Site name	Quality rating	Match equivalent sessions <sup>38</sup> (per week)	Site capacity (sessions per week)	Capacity rating	Training demand (match sessions per week)	Comments	Projected capacity
35	Hucclecote Playing Field (Hucclecote RFC)	M0 / D1 (Poor)	2	1.5	0.5	-	-	0.5
36	King George V Playing Fields (Hucclecote RFC)	M0 / D1 (Poor)	2.5	1.5	1	1	Mini training at weekends in the absence of a fixture	-
39	Longlevens Recreation Ground (Longlevens RFC)	M0 / D0 (Poor)	4	1	3	-	-	3
40	Matson Park (Matson RFC)	M0 / D1 (Poor)	8	3	5	5	Senior and junior midweek training and mini weekend training	-
42	Memorial Ground (Old Cryptians RFC and Widden Old Boys RFC)	M0 / D0 (Poor)	3.5	0.5	3	2.5	Senior training and junior training in the absence of matches	0.5
			2	0.5	1.5	0.5	Mini training at weekends in the absence of a fixture	1
			6.5	0.5	6	4	Senior and junior midweek training and Sunday PM junior training	2
			2.5	0.5	2	1.5	Mini team training Sunday PM	0.5

## GLOUCESTER PLAYING PITCH STRATEGY

Site ID	Site name	Quality rating	Match equivalent sessions <sup>38</sup> (per week)	Site capacity (sessions per week)	Capacity rating	Training demand (match sessions per week)	Comments	Projected capacity
53	Sir Thomas Rich's Sports Centre	M0 / D1 (Poor)	0 +3 +4.5 +2	3	6.5	-	-	6.5
			1.5 +3 +4.5 +2	3	8	0,75	Mini training at weekends in the absence of a fixture	7.25
9902	Kingsway Sports Field	M0 / D1 (Poor)	0.5	1.5	1	-	-	1



# GLOUCESTER PLAYING PITCH STRATEGY

## APPENDIX FIVE: HOUSING GROWTH SCENARIO

Location	Number of new homes	Estimated population <sup>39</sup>	% increase in population
A1 – Innsworth	1,250 new homes	2,875 people	2.3%

Sport	Age group	Current population within age group	Current no. of teams	Team Generation Rate	Future population within age group	Predicted future number of teams	Additional teams that may be generated from the increased population
Football	Senior Mens	25,470	60	425	26,056	61	1
	Senior Women	25,259	3	8420	25,840	3	0
	Youth Boys	4,414	61	72	4,516	63	2
	Youth Girls	4,215	7	602	4,312	7	0
	Mini-Soccer Mixed	5,916	44	134	6,052	45	1
Cricket	Senior Mens	32,646	21	1555	33,397	21	0
	Senior Womens	32,745	0	0	33,498	0	0
	Junior Boys	8,245	3	2748	8,435	3	0
	Junior Girls	7,880	0	0	8,061	0	0
Rugby	Senior Mens	23,047	41	562	23,577	42	1
	Senior Women	23,050	3	7683	23,580	3	0
	Junior Boys	4,725	24	197	4,834	25	1
	Junior Girls	4,347	2	2174	4,447	2	0
	Mini rugby mixed	8,599	36	239	8,797	37	1
Hockey	Senior Mens	25,470	10	2547	26,056	10	0
	Senior Womens	25,259	6	4210	25,840	6	0
	Junior Boys	3,732	5	746	3,818	5	0
	Junior Girls	3,529	4	882	3,610	4	0

<sup>39</sup> Based on an occupancy rate of 2.3 people

## GLOUCESTER PLAYING PITCH STRATEGY

Location	Number of new homes	Estimated population <sup>40</sup>	% increase in population
A2 – North Churchdown	532 new homes	1,223 people	1%

Sport	Age group	Current population within age group	Current no. of teams	Team Generation Rate	Future population within age group	Predicted future number of teams	Additional teams that may be generated from the increased population
Football	Senior Mens	25,470	60	1:425	25,725	61	1
	Senior Women	25,259	3	1:8420	25,512	3	0
	Youth Boys	4,414	61	1:72	4,458	62	1
	Youth Girls	4,215	7	1:602	4,257	7	0
	Mini-Soccer Mixed	5,916	44	1:134	5,975	45	1
Cricket	Senior Mens	32,646	21	1:1555	32,972	21	0
	Senior Womens	32,745	0	0	33,072	0	0
	Junior Boys	8,245	3	1:2748	8,327	3	0
	Junior Girls	7,880	0	0	7,959	0	0
Rugby	Senior Mens	23,047	41	1:562	23,277	41	0
	Senior Women	23,050	3	1:7683	23,281	3	0
	Junior Boys	4,725	24	1:197	4,772	24	0
	Junior Girls	4,347	2	1:2174	4,390	2	0
	Mini rugby mixed	8,599	36	1:239	8,685	36	0
Hockey	Senior Mens	25,470	10	1:2547	25,725	10	0
	Senior Womens	25,259	6	1:4210	25,512	6	0
	Junior Boys	3,732	5	1:746	3,769	5	0
	Junior Girls	3,529	4	1:882	3,564	4	0

<sup>40</sup> Based on an occupancy rate of 2.3 people

# GLOUCESTER PLAYING PITCH STRATEGY

Location	Number of new homes	Estimated population <sup>41</sup>	% increase in population
A3 – South Churchdown	868 new homes	1,996 people	1.6%

Sport	Age group	Current population within age group	Current no. of teams	Team Generation Rate	Future population within age group	Predicted future number of teams	Additional teams that may be generated from the increased population
Football	Senior Mens	25,470	60	1:425	25,878	61	1
	Senior Women	25,259	3	1:8420	25,663	3	0
	Youth Boys	4,414	61	1:72	4,485	62	1
	Youth Girls	4,215	7	1:602	4,282	7	0
	Mini-Soccer Mixed	5,916	44	1:134	6,011	45	1
Cricket	Senior Mens	32,646	21	1:1555	33,168	21	0
	Senior Womens	32,745	0	0	33,269	0	0
	Junior Boys	8,245	3	1:2748	8,377	3	0
	Junior Girls	7,880	0	0	8,006	0	0
Rugby	Senior Mens	23,047	41	1:562	23,416	42	1
	Senior Women	23,050	3	1:7683	23,419	3	0
	Junior Boys	4,725	24	1:197	4,801	24	0
	Junior Girls	4,347	2	1:2174	4,417	2	0
	Mini rugby mixed	8,599	36	1:239	8,737	37	1
Hockey	Senior Mens	25,470	10	1:2547	25,878	10	0
	Senior Womens	25,259	6	1:4210	25,663	6	0
	Junior Boys	3,732	5	1:746	3,792	5	0
	Junior Girls	3,529	4	1:882	3,585	4	0

<sup>41</sup> Based on an occupancy rate of 2.3 people

## GLOUCESTER PLAYING PITCH STRATEGY

Location	Number of new homes	Estimated population <sup>42</sup>	% increase in population
A4 – North Brockworth	1,500 new homes	3,450 people	2.8%

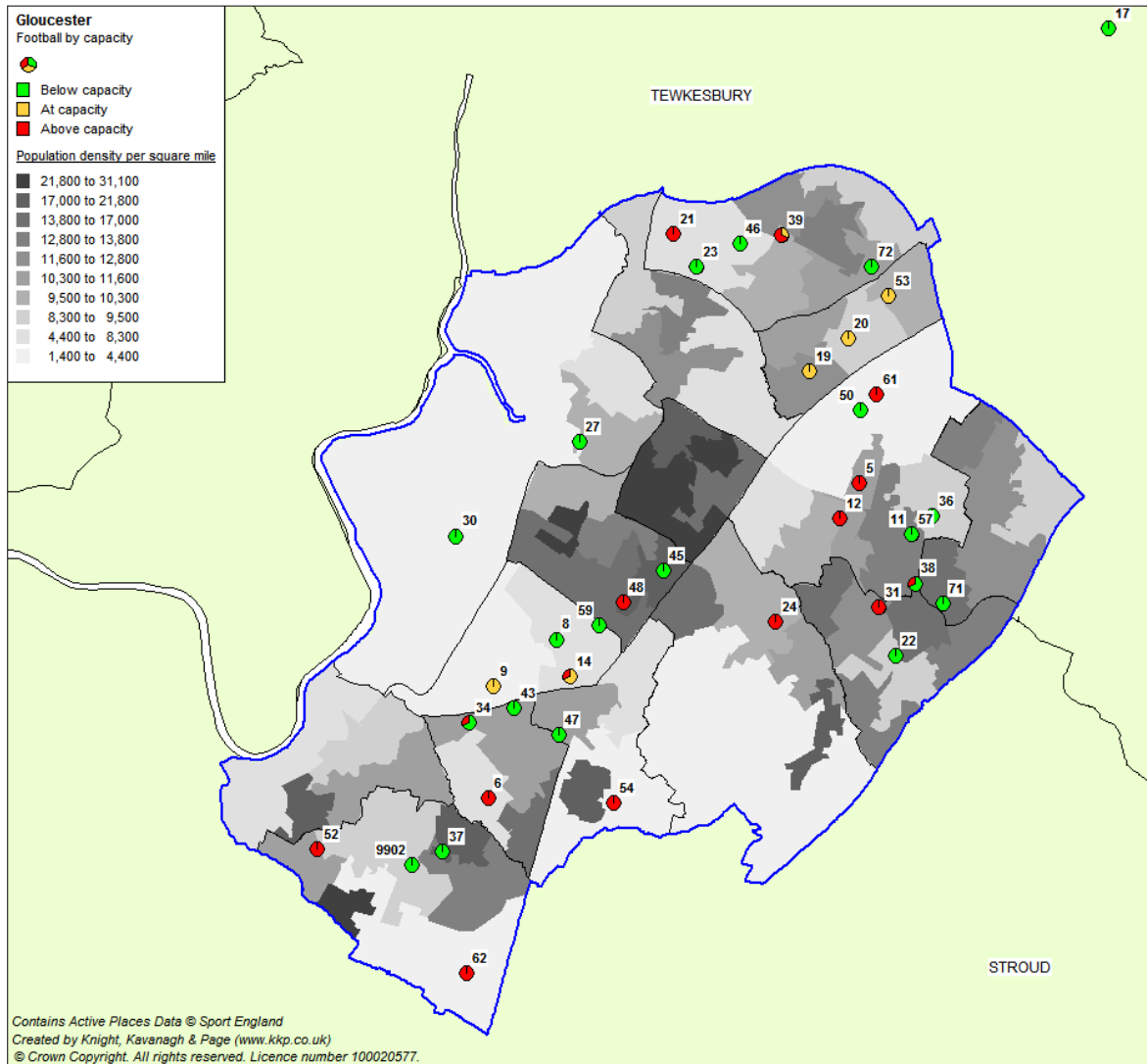
Sport	Age group	Current population within age group	Current no. of teams	Team Generation Rate	Future population within age group	Predicted future number of teams	Additional teams that may be generated from the increased population
Football	Senior Mens	25,470	60	1:425	26,183	62	2
	Senior Women	25,259	3	1:8420	25,966	3	0
	Youth Boys	4,414	61	1:72	4,538	63	2
	Youth Girls	4,215	7	1:602	4,333	7	0
	Mini-Soccer Mixed	5,916	44	1:134	6,082	45	1
Cricket	Senior Mens	32,646	21	1:1555	33,560	22	1
	Senior Womens	32,745	0	0	33,662	0	0
	Junior Boys	8,245	3	1:2748	8,476	3	0
	Junior Girls	7,880	0	0	8,101	0	0
Rugby	Senior Mens	23,047	41	1:562	23,692	42	1
	Senior Women	23,050	3	1:7683	23,695	3	0
	Junior Boys	4,725	24	1:197	4,857	25	1
	Junior Girls	4,347	2	1:2174	4,469	2	0
	Mini rugby mixed	8,599	36	1:239	8,840	37	1
Hockey	Senior Mens	25,470	10	1:2547	26,183	10	0
	Senior Womens	25,259	6	1:4210	25,966	6	0
	Junior Boys	3,732	5	1:746	3,836	5	0
	Junior Girls	3,529	4	1:882	3,628	4	0

<sup>42</sup> Based on an occupancy rate of 2.3 people

# GLOUCESTER PLAYING PITCH STRATEGY

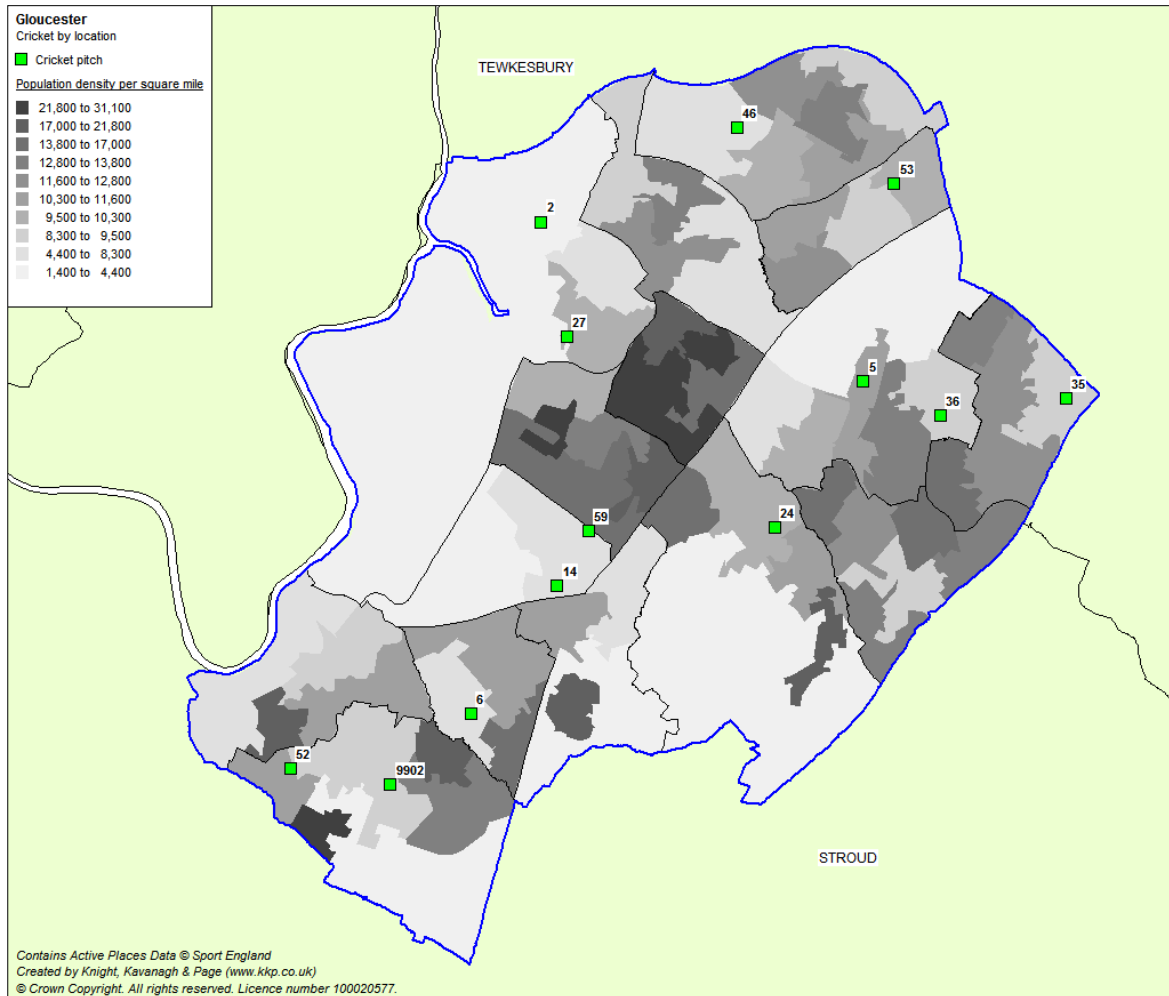
## APPENDIX SIX: REFERENCE MAPS (BY SITE ID NUMBER)

*Location and capacity of football pitches in Gloucester*



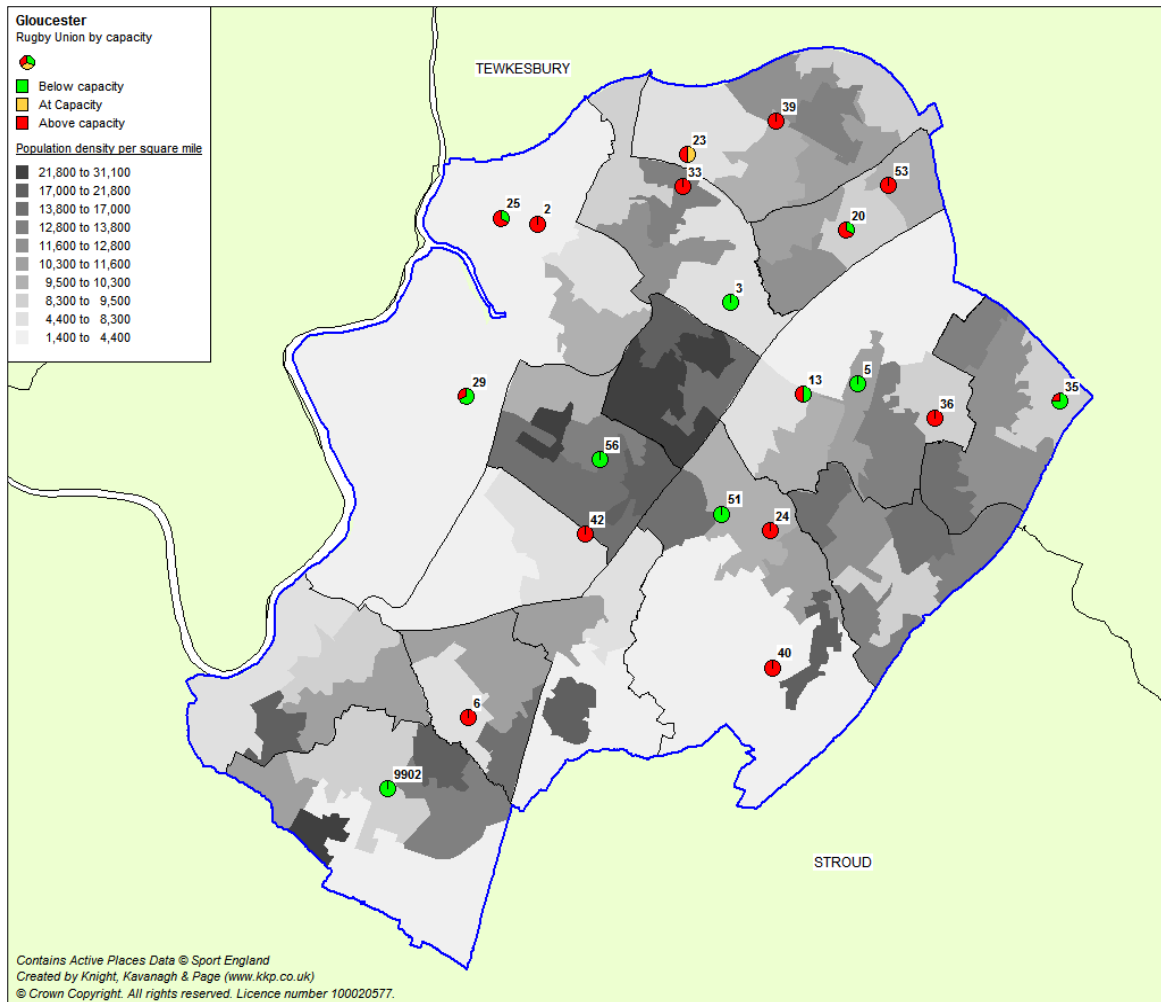
# GLOUCESTER PLAYING PITCH STRATEGY

## Location of cricket squares in Gloucester



# GLOUCESTER PLAYING PITCH STRATEGY

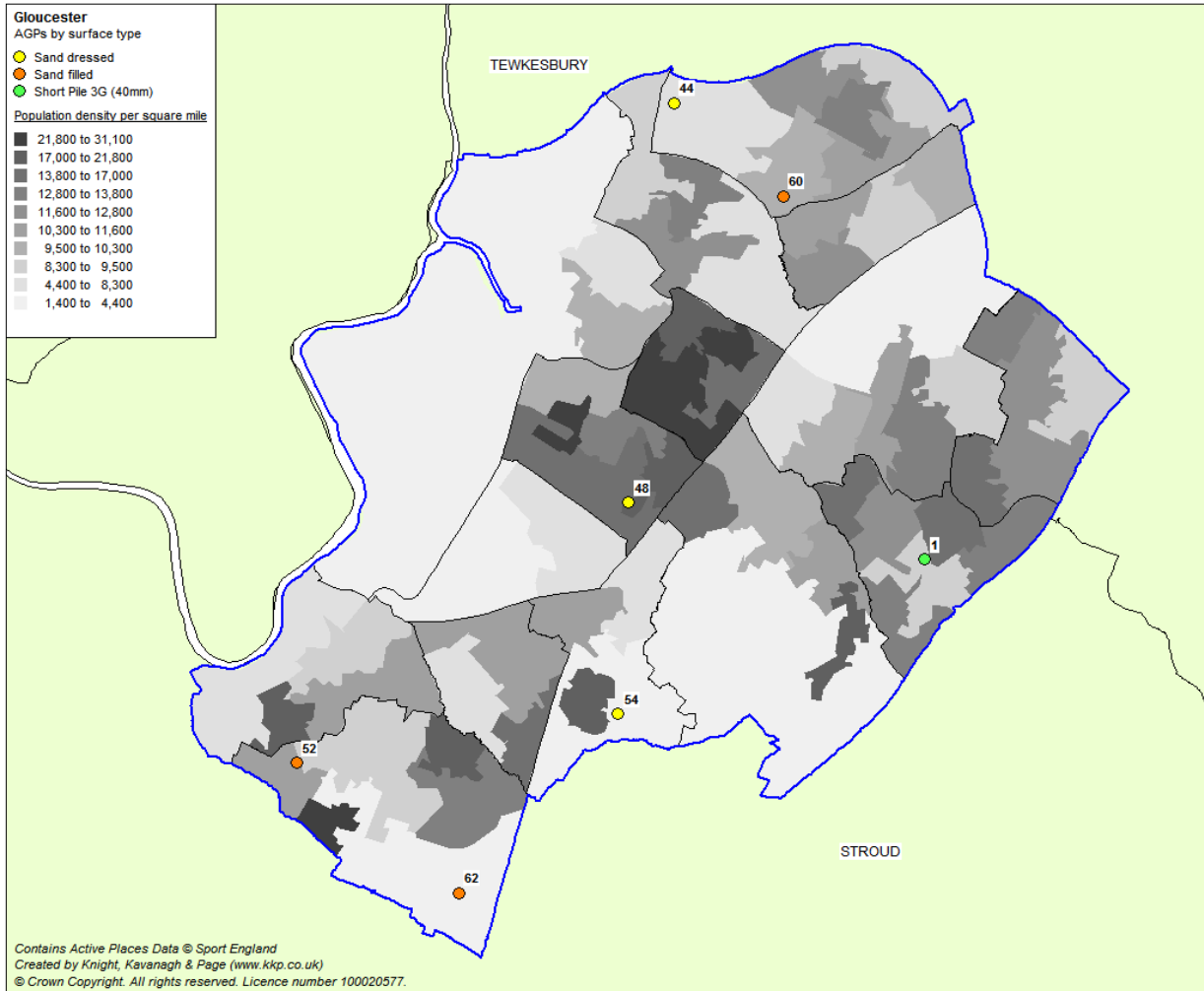
Location and capacity of rugby union pitches in Gloucester





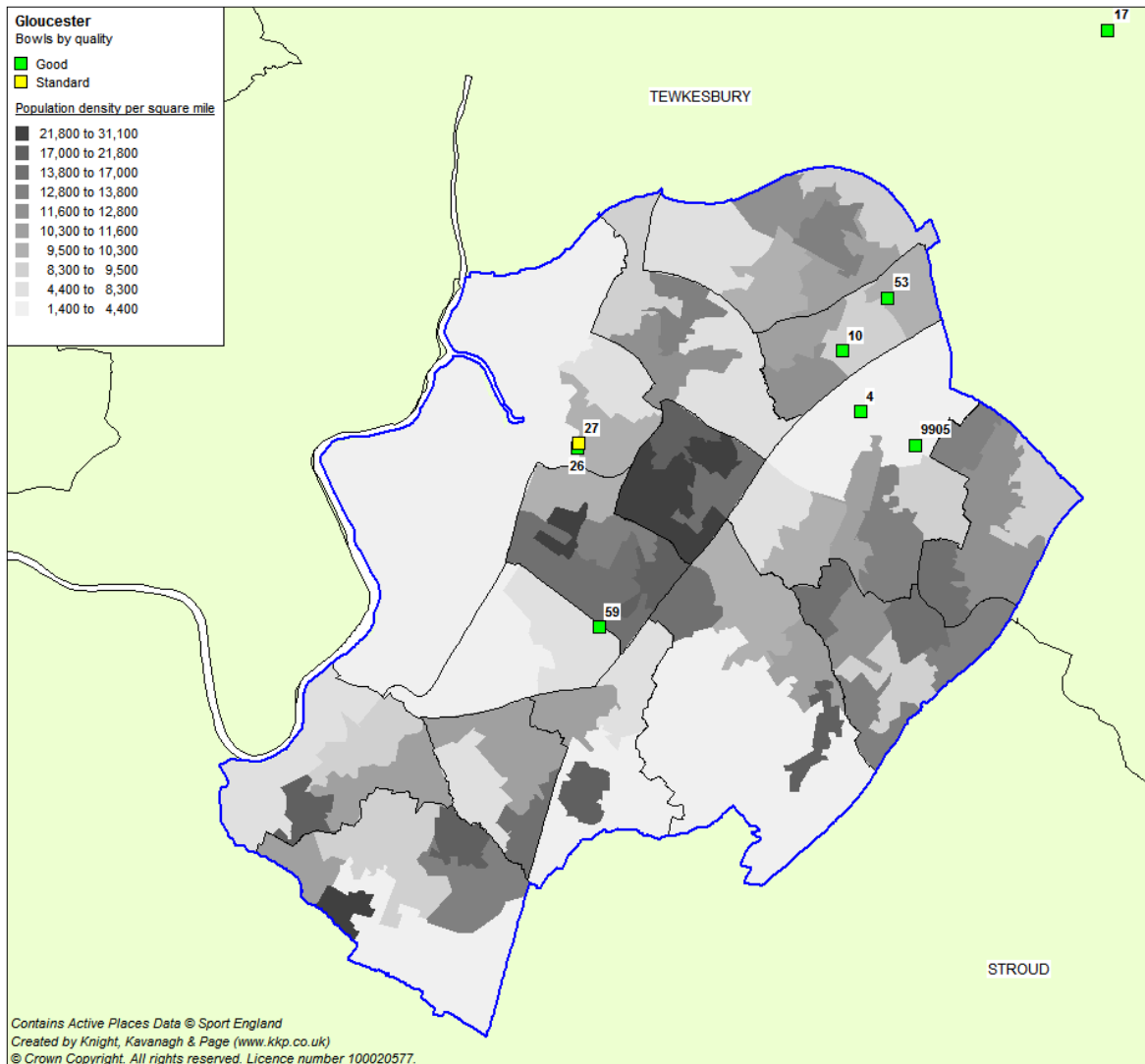
# GLOUCESTER PLAYING PITCH STRATEGY

## Location of full size AGPs in Gloucester



# GLOUCESTER PLAYING PITCH STRATEGY

*Location of bowling greens in Gloucester*



# GLOUCESTER PLAYING PITCH STRATEGY

## Location of tennis courts in Gloucester

