



ARBORICULTURAL
CONSULTANTS



Registered Arboricultural Consultant
Chartered Arboriculturist



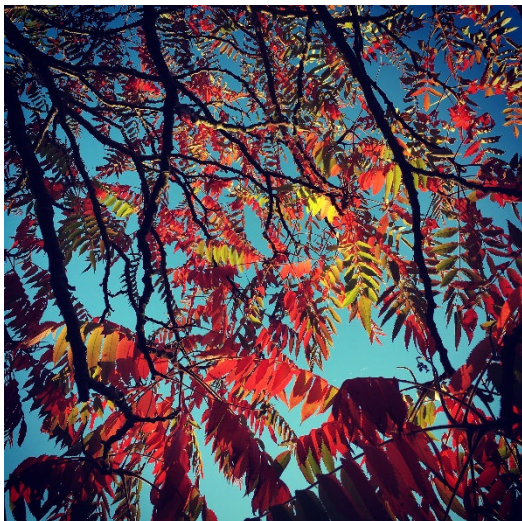
ARBORICULTURAL METHOD STATEMENT

Relating to:

NEW RESIDENTIAL DEVELOPMENT
AND ASSOCIATED INFRASTRUCTURE

At:

LAND NORTH OF RUDLOE DRIVE,
KINGSWAY, GLOUCESTER



Instructed by:

VISTRY COTSWOLDS

MHP ref: 22037 LAND NORTH OF RUDLOE DRIVE, GLOUCESTER_AMS_V2

MHP ARBORICULTURE 79 THE PROMENADE CHELTENHAM GL50 1RJ



MHP ARBORICULTURE IS A TRADING NAME OF MHP DESIGN LTD

CONTENTS:

1	INTRODUCTION	1
2	T44 – ARBORICULTURAL METHOD STATEMENT	2
APPENDIX 1 – TREE PROTECTION PLAN		

Issue record

Date	Version	Notes
13.09.2022	V1	Initial issue
14.09.2022	V2	Text amends and appendices

1 INTRODUCTION

1.1 Background

1.1.1 A reserved matters planning application has been submitted to Gloucester City Council (GCC) for new residential development and associated infrastructure.

- Planning reference: 22/00553/REM.

1.1.2 MHP Arboriculture has prepared an impact assessment and tree protection details as part of the application:

- MHP reference: 22037 LAND NORTH OF RUDLOE DRIVE,
GLOUCESTER_V1_COMBINED

1.2 Pre-determination feedback

1.2.1 Pre-determination feedback has been received from GCC. The Tree Officer's comments in summary are:

- *Summary:*
 1. *No significant trees shall be removed to enable the construction of the proposals.*
 2. *Tree protection measures in accordance with the submitted report can be put in place to ensure that construction works do not result in damage to the retained trees. This is with the exception of T44 which requires an additional arboricultural method statement to ensure that the TPO tree is suitably protected.*
 3. *New tree planting could be carried out that will enhance the arboricultural qualities of the site into the future. But more tree planting along the Rudloe Drive and main access road are required, more akin to outline plan 309.P.6.1.*
 4. *There is potential for future subsidence claims in one area of the site. It is recommended that further information is provided, to address these concerns.*
 - *Objection - subject to points 2, 3 and 4 being satisfied.*

1.3 Instruction and scope

1.3.1 I am instructed by Vistry Cotswolds to prepare relevant arboricultural information to address point 2 above.

2 T44 – ARBORICULTURAL METHOD STATEMENT

2.1 Description of task

- 2.1.1 Remove existing hard surfacing next to a Tree Preservation Order (TPO) protected tree and reinstate to grassed public open space.
- 2.1.2 All contractors must be made aware of the content and the requirements of this AMS and must agree to conform before starting work.
- 2.1.3 The requirements of the AMS must be implemented in full in order to enable suitable compliance with the planning permission.

2.2 Arboricultural Method Statement

- 2.2.1 Refer to the Tree Protection Plan at **Appendix 1** (detail below).

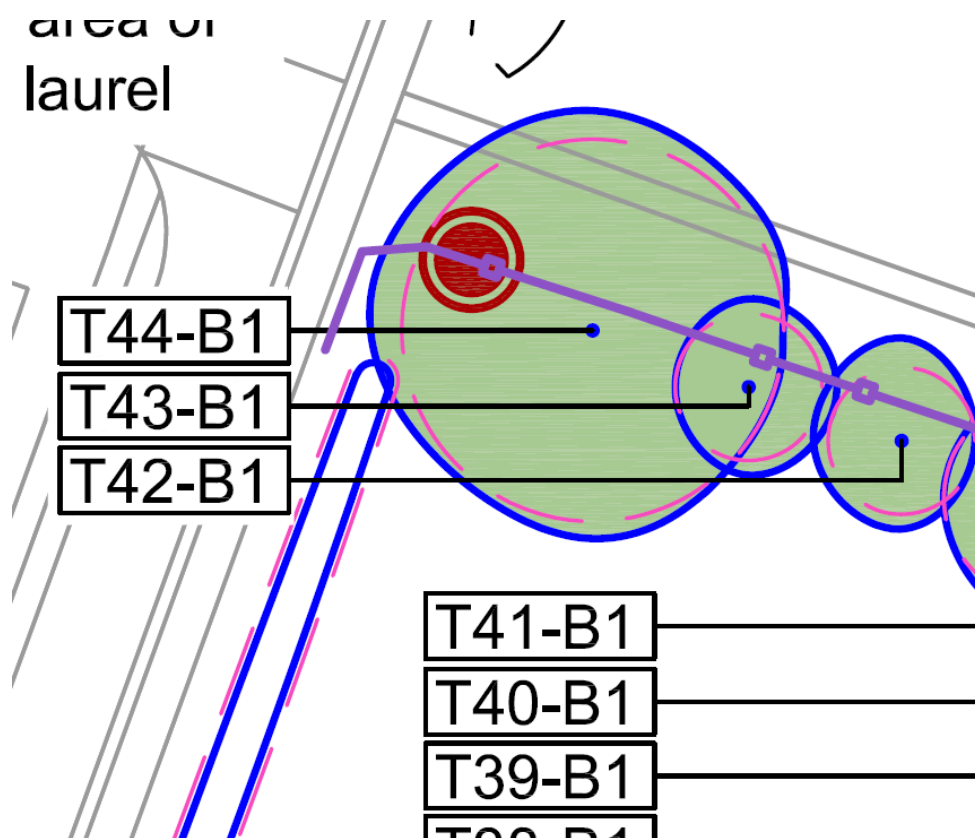


Figure 1 – extract from Tree Protection Plan

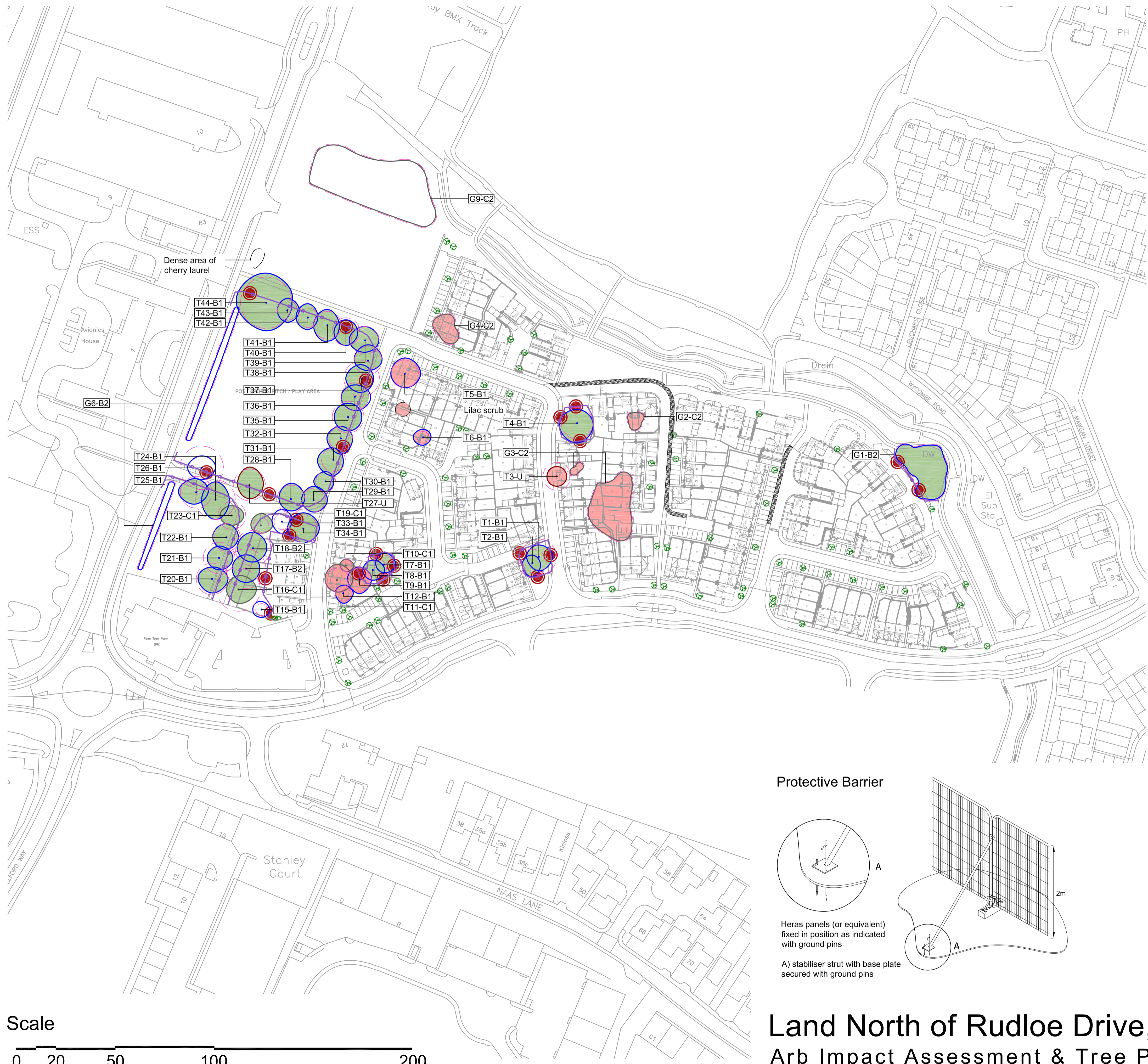
- 2.2.2 Ensure that other site operations (for example removal of road surface adjacent to other nearby trees) is sequenced so that vehicle access for removal of arisings and import of topsoil is always on the existing hard surfacing.

2.2.3 The arboricultural method statement is set out in the table below:.

Sequence of site operations and Tree Protection Monitoring			
Work stage	Task	Description	Tree Protection Monitoring
1	Tree protection barriers	<ul style="list-style-type: none"> Construct in locations and to specifications shown on the Tree Protection Plan. 	<ul style="list-style-type: none"> Email photographs of tree protection in-situ to Gloucester City Council planning department for inclusion on the planning file.
2	Removal of existing hard surfacing	<ul style="list-style-type: none"> Hard surfacing can be dismantled using a mechanical excavator BUT a banksman must be present at all times to check for the presence of roots. Work from on top of the existing road surface at all times. Note that Work Stages 2 and 3 must be combined to enable replacement topsoil to be brought to the work area using the existing road surface. Carefully pull out the kerbs closest to the tree. Then lift off tarmac and the sub-base beneath. If tree roots are encountered that are greater than 20mm diameter and with potential to be broken, stop mechanical excavation and continue to dismantle the structure by hand only. Where roots are exposed and retained, they must be covered with hessian cloth to prevent them from drying out. If any roots are accidentally damaged during the process, photograph the nature and extent of the damage and then prune back any torn ends using a sharp tool (such as secateurs/pruning saw) removing as little as possible and leaving a neat cut that is as small as possible. Remove all arisings from site. Backfill with topsoil as described at Work Stage 3. Repeat. 	<ul style="list-style-type: none"> Email photographs works in process in relation to tree protection to Gloucester Council planning department for inclusion on the planning file
3	Backfill excavated area and establish new grass surface	<ul style="list-style-type: none"> If possible, use topsoil that has been graded off and separated as part of ground work operations elsewhere on the site – note this soil must not be a mix of top and sub soil. If unavailable, use topsoil to conform to BS 3882:2015. Fill the void with topsoil to the required level and level off to leave the finished level proud of the surrounding area to enable natural settlement. Do not compact the area. Repeat Work Stage 2. On completion, adjust tree protection barriers to cover entire area of imported topsoil as this is now Root Protection Area. 	<ul style="list-style-type: none"> Email photographs works in process in relation to tree protection to Gloucester City Council planning department for inclusion on the planning file

Sequence of site operations and Tree Protection Monitoring			
Work stage	Task	Description	Tree Protection Monitoring
4	Remove tree protection barriers	<ul style="list-style-type: none"> Barriers must not be removed until completion of all other construction works on site. 	<ul style="list-style-type: none"> Provide Gloucester City Council with five working days' written notice that the barriers are to be removed
5	Final landscaping	<ul style="list-style-type: none"> Manually weed the area. Apply grass seed and provide aftercare in accordance with the Landscaping Scheme. Keep area fenced off until grass is 	<ul style="list-style-type: none"> Email photographs of completed works to Gloucester City Council planning department for inclusion on the planning file. Provide suitable evidence to Gloucester City Council planning department to demonstrate compliance with grass establishment maintenance requirements.

APPENDIX 1 – TREE PROTECTION PLAN



Key

- Vegetation to be removed / area pruned
- Tree Protection Order (TPO)
- Proposed tree planting
- Tree protection fencing (see Protective Barrier detail)
- Signage 'Construction exclusion zone - No Access'

Quality and Suitability For Retention

- Category A - High quality and value (Highly desirable for retention)
- Category B - Moderate quality and value (Desirable for retention)
- Category C - Low quality and value (Optional for retention)
- Category U - Poor quality and value (Unsuitable for retention)

Tree number on plan	Common name	Quality grading	RPA radius (m)	TPO reference
T1	Cherry	B1	9	T16
T2	Pear	B1	7	T15
T3	Pear	U	7	None
T4	Cherry	B1	8	T27
T5	Cherry	B1	7	None
T6	Cherry	B1	3	None
T7	Cherry	B1	5	None
T8	English oak	B1	7	G13
T9	English oak	B1	6	G13
T10	English oak	C1	3	G13
T11	Common beech	C1	6	G13
T12	Common beech	B1	4	G13
T13	Removed	None	None	None
T14	Removed	None	None	None
T15	Walnut	B1	3	None
T16	Horse chestnut	C1	11	G11
T17	Horse chestnut	B2	10	G11
T18	Horse chestnut	B2	9	G11
T19	Cherry	C1	4	G12
T20	Horse chestnut	B1	8	G7
T21	Horse chestnut	B1	8	G8
T22	Horse chestnut	B1	7	G9
T23	Horse chestnut	C1	7	G10
T24	Horse chestnut	B1	10	G11
T25	Horse chestnut	B1	8	G12
T26	Horse chestnut	B1	11	None
T27	Horse chestnut	U	8	G7
T28	Cherry	B1	7	G7
T29	Cherry	B1	6	G7
T30	Cherry	B1	5	G7
T31	Cherry	B1	6	G7
T32	Cherry	B1	6	G7
T33	Cherry	B1	4	G7
T34	Cherry	B1	7	T13
T35	Cherry	B1	8	G7
T36	Cherry	B1	7	G7
T37	Cherry	B1	9	G7
T38	Cherry	B1	7	G7
T39	Cherry	B1	7	G7
T40	Cherry	B1	7	G7
T41	Cherry	B1	7	G7
T42	Cherry	B1	5	G7
T43	Cherry	B1	5	G7
T44	Grey poplar	B1	13	T14
G1	Common beech, English oak	B2	As shown on plan	G21
G2	Cherry, holly,	C2	As shown on plan	None
G3	Elder, cherry laurel, ash, box, stag horn sumach	C2	As shown on plan	None
G4	Ash, hawthorn, conocheaster	C2	As shown on plan	None
G5	Removed	None	None	None
G6	Common lime	B2	As shown on plan	None
G7	Removed	None	None	None
G8	Removed	None	None	None
G9	Ash, hawthorn, dogwood, whitebeam, horse chestnut,	C2	As shown on plan	None

Root Protection Areas (RPA)

Root Protection Areas (RPA) indetified are in accordance with BS5837:2012. RPA's are shown as a pink dashed polyline

Tree Key

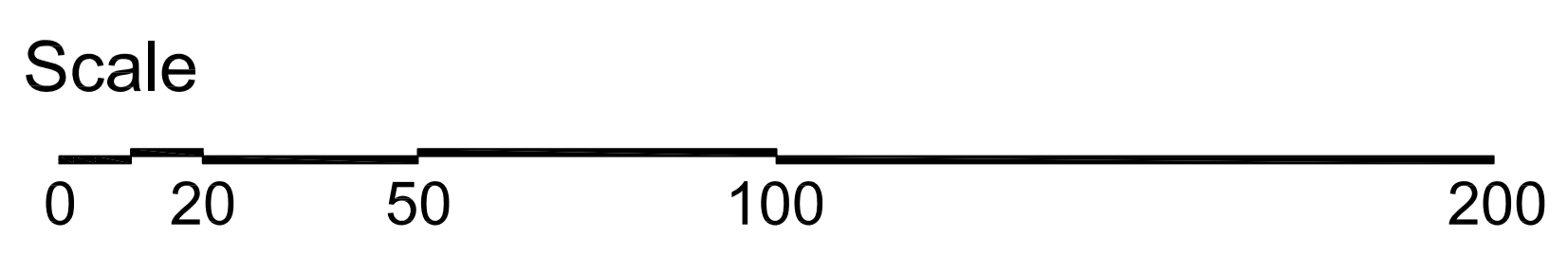
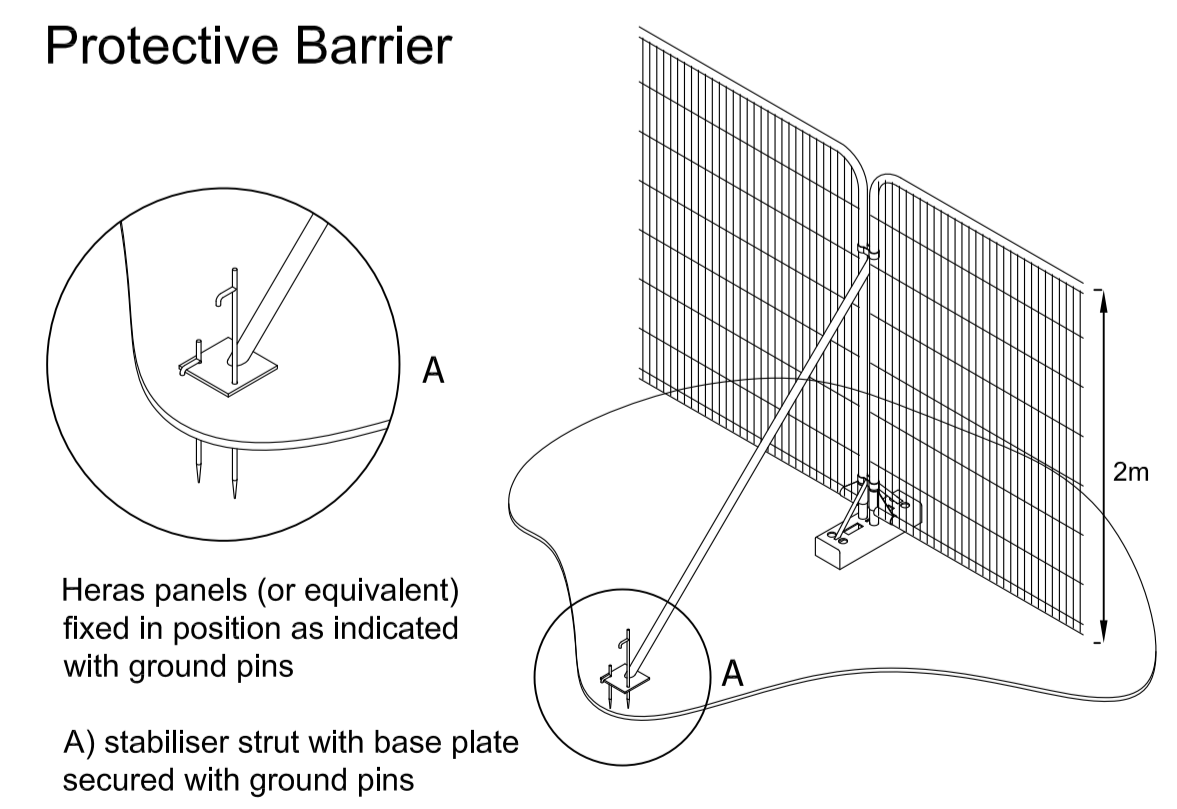
- Existing shade segment (where applicable)
- Root Protection Area (RPA)
- Tree / Group canopy extent (calculated using N.E.S.W cardinal points - not shown)
- Tree / Group Number ID and Quality

Group / Area / Woodland / Hedgerow Key

- Root Protection Area (RPA)
- Woodland, group or hedge
- Tree / Group Number ID

- ### Notes
- 1) Survey Date 3rd February 2022.
 - 2) This drawing has been produced to be printed in colour. If you have been given this drawing in monochrome please request a colour version.
 - 3) Do not scale directly from this drawing.
 - 4) This drawing is to be read in conjunction with all other relevant MHP drawings and information supplied by other consultants.

Revisions:	Date:	Drawn:	Checked:
Project: Land North of Rudloe Drive, Gloucester			
Client: Vistry Cotswolds			
Title: Arbicultural Impact Assessment and Tree Protection Plan			
Drawing number: 22037.502		Rev:	
Status: FOR INFORMATION			
Drawn By: GW	Checked By: MR	Date: 19-05-22	Scale @ A1: 1:1000



Land North of Rudloe Drive, Gloucester

Arb Impact Assessment & Tree Protection Plan

