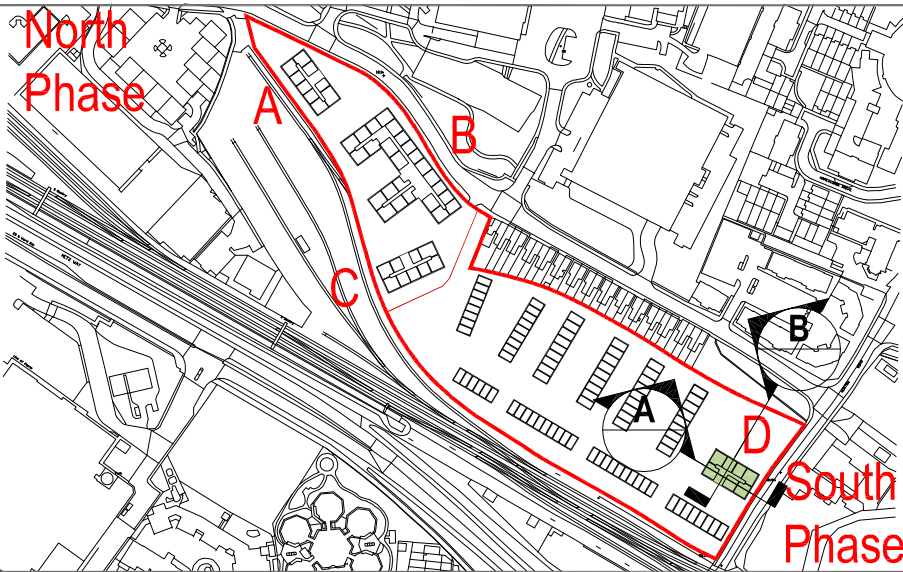


General Notes

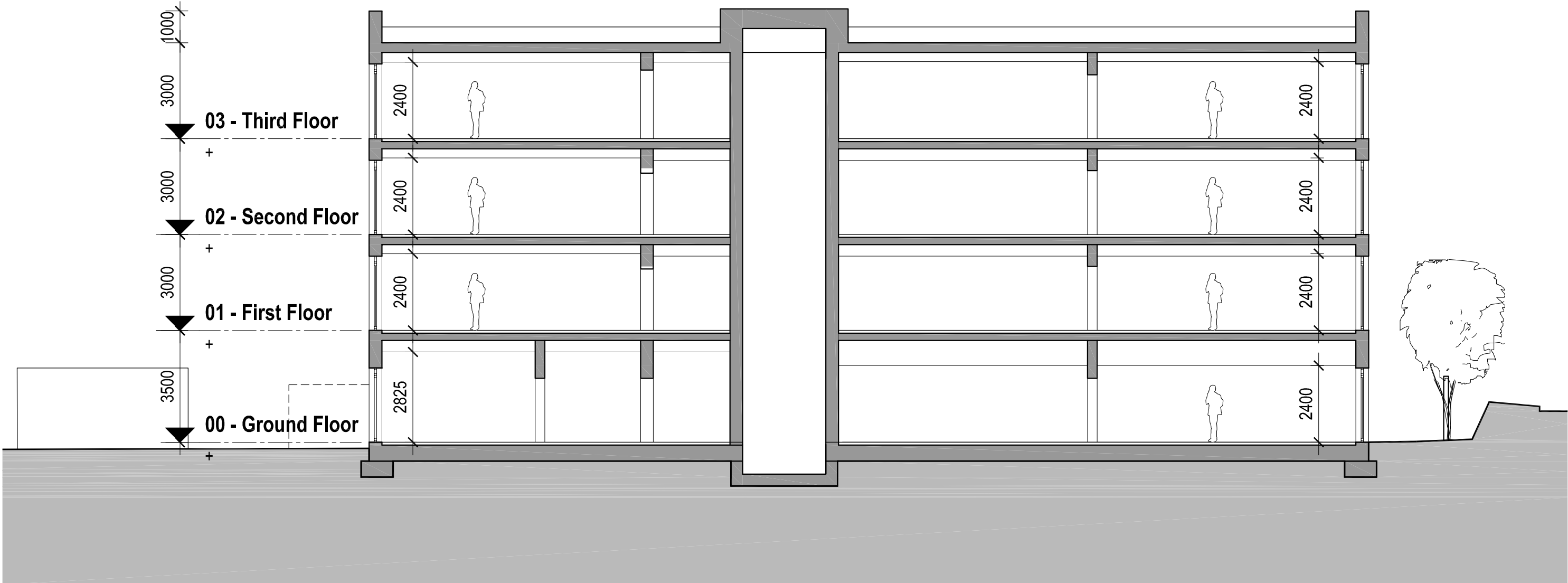
The drawing is copyright of Darling Associates. This drawing shall not be scaled. All dimensions are in mm unless otherwise stated. All dimensions shall be checked on site prior to commencing the works and any discrepancies to be reported to Darling Associates. All works shall conform to the current edition of the building regulations and other statutory requirements. All materials and workmanship shall conform with the relevant British Standard specifications and codes of practice. If this drawing forms part of an application for planning permission, it shall not be used for any other purpose without the express permission of Darling Associates. This drawing may incorporate information from other professionals. Darling Associates cannot accept responsibility for the integrity and accuracy of such information. Any clarification and/or additions that are required appertaining to such information should be sought from the relevant profession or their appointment representative.

Drawings, specifications and schedules are to be read in conjunction with the following where applicable: Employer's Requirements documents, Agreements to Lease, Structural Engineer's drawings and specifications, Civil Engineer's drawings and specifications, Survey Drawings, Party Wall Boundary Awards, Other specialist design consultant's requirements as appointed by the Main Contractor, Other specialist design sub-contractor's requirements as appointed by the Main Contractor.

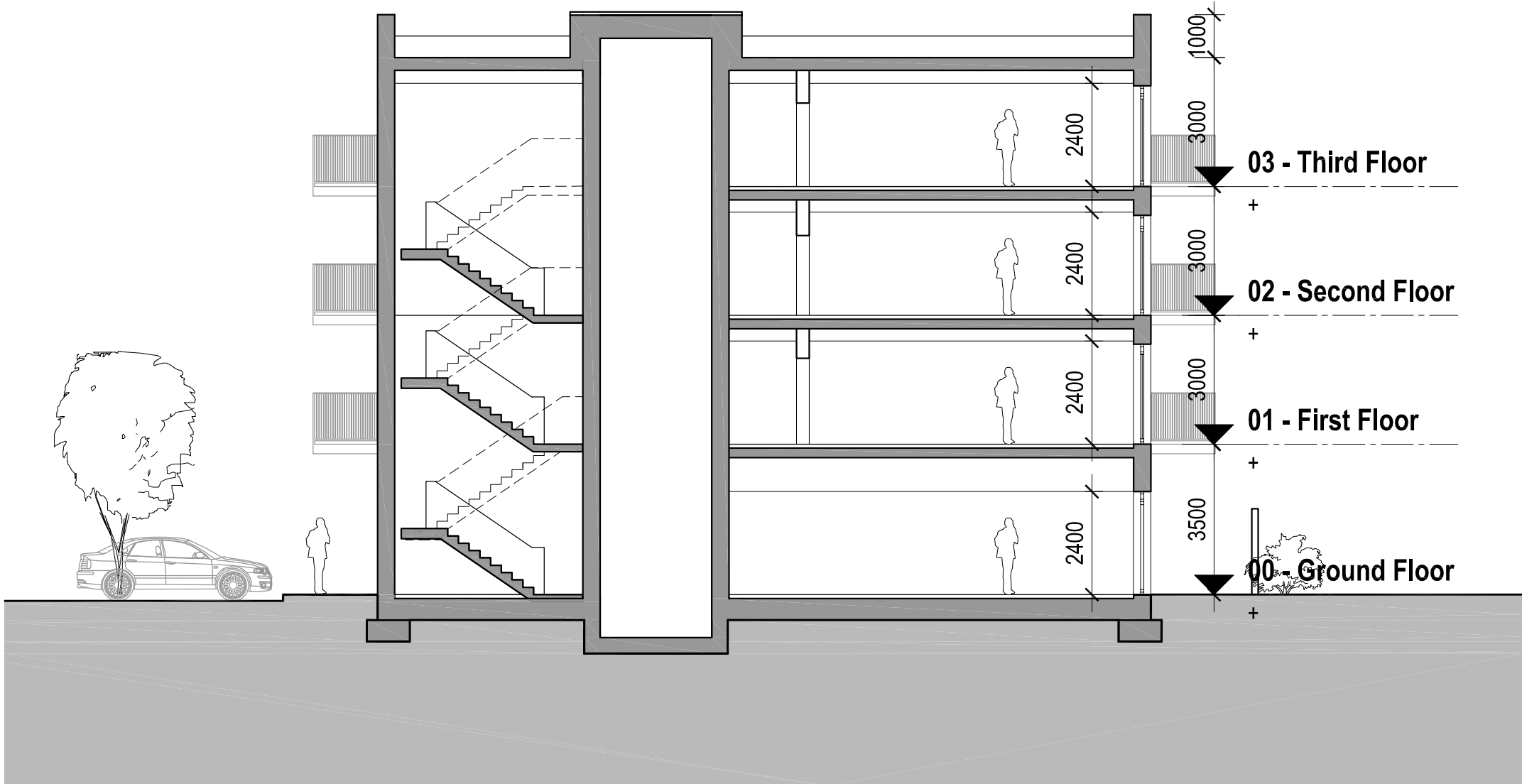
Key Plan



Notes

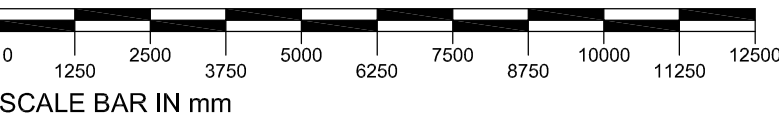


A Section A - Long
SCALE 1:125



B Section B - Short
SCALE 1:125

Block
D



PL	Issue for Planning	JUN 2022	JA	JS
REV	NOTES	DATE	BY	AUTH

DARLING ASSOCIATES
ARCHITECTS

1 Greencoat Row
London SW1P 1PQ
UK

DRAWING STATUS

Planning

TITLE

Apartments Sections - Block D

PROJECT

Great Western Yard

SCALE AT A1:
1:125

SCALE AT A3:
1:250

JOB NO.

19050

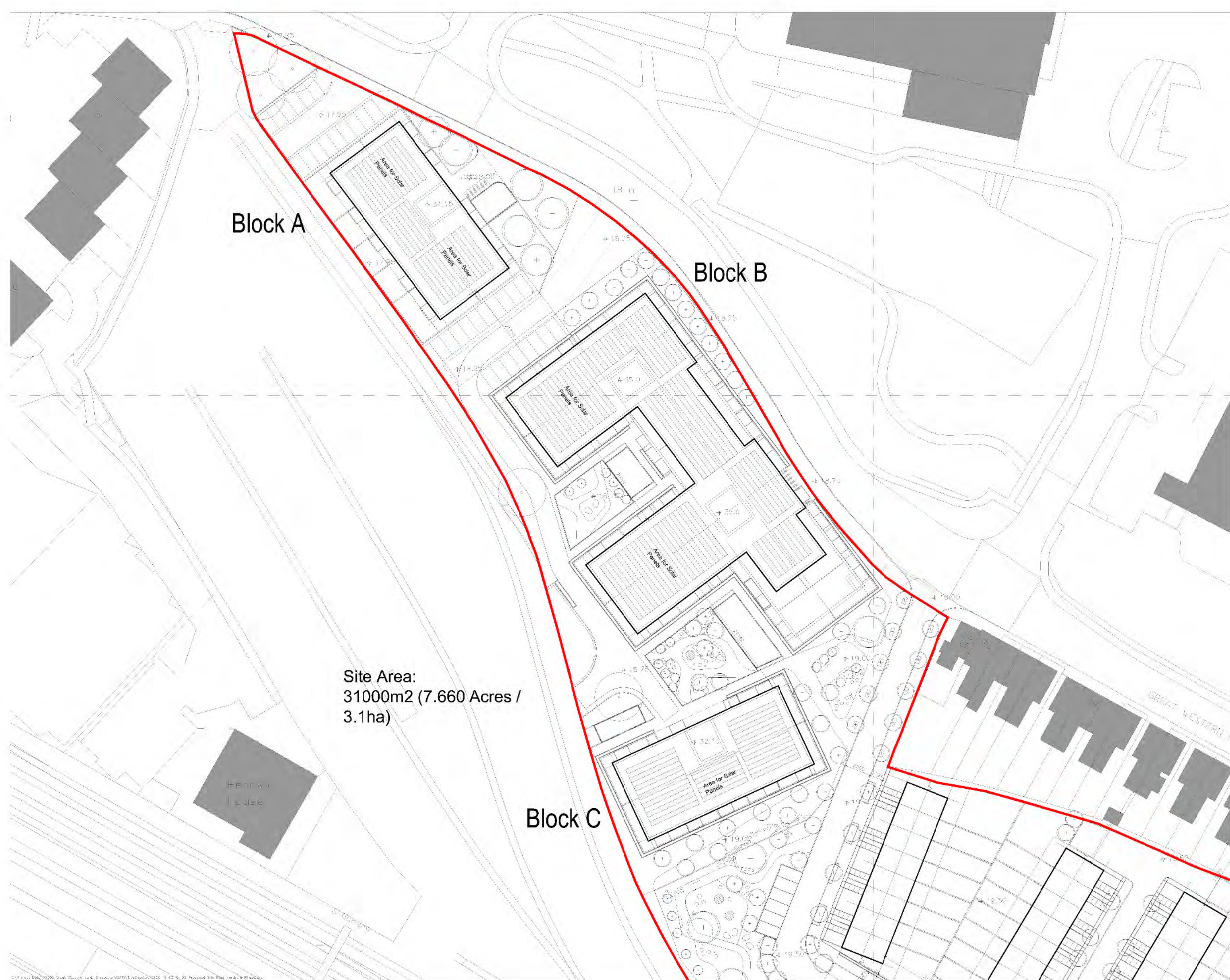
DRAWING

D-03-3-01

REV

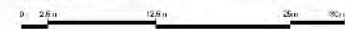
PL

© Darling Associates Ltd.

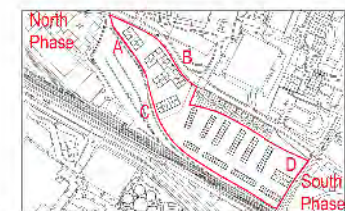


General Notes

The following is a general list of Topical Questions. The *Answer* column has been filled in. As a reminder, we are not submitting these as actual A&S recommendations for discussion, but as a demonstration of the format of our responses. The questions are the ones that we considered as potential candidates for the national list of questions. We are not submitting all of them, but we are submitting the ones that we think are most likely to be asked. We are not submitting all of them, but we are submitting the ones that we think are most likely to be asked. We are not submitting all of them, but we are submitting the ones that we think are most likely to be asked.



Key Plan



Notes



Apartments	Houses
1B / 1P	2B / 3P
1B / 2P	3B / 4P
2B / 3P	3B / 5P
2B / 4P	
3B / 4P	
3B / 5P	

Planning Application Boundary



of	used for Paying	JUN 2002	2	75
REV	NOTES	DATE	BY	AMT

DARLING ASSOCIATES
ARCHITECTS

1 Greenboat Row
London SW1P 3H
UK

Planning

**Proposed
Site Plan - Northern Phase**

PROJECT
Great Western Yard

SCALE A-A'	SCALE A-A'
1:250	N.T.S.

REF NO:	ISSUES:	REF:
19050	8-03-0-00	PI

© Darting Associates Ltd.

© Darling Associates Ltd.

Block D


Notes



© Darling Associates Ltd.

Block D


Multistem Trees			
Tree Tags	Species	Height	Spec
A1	<i>Anelachner lamarkii</i>	2.0-2.5m	2xR (R6)
B1	<i>Betula utilis</i> var. <i>jacquemondii</i>	44-5m	2xR (R6)
H2	<i>Hamamelis x intermedia</i> 'Diana'	35-40m	2xR (R6)
M4	<i>Malus domestica</i>	35-40m	2xR (R6)
Tv	<i>Cornus mas</i>	2.0-2.5m	2xR (R6)

Hedge Planting				
Low Hedge				
Species	Stock	Height	Spec	Density
 Carpinus betulus	R8/C	1.0m	Double staggered row	6/lin

Shrubs, Perennials, Grasses				
Naturalistic Planting Mix				
Species	Stock	Height	Spec	Density

[illegible]

SUDs Planting					
Species	Stock	Height	Spec	Density	
Cassia siamea 'Mistral'	C2	30-40cm	Branched	2/m ²	
Cassipouira hederacea	C2	60-80cm	Branched	2/m ²	
Commersonia nepenthes	C2	30-40cm		2/m ²	
Hy. panchalensis	C2	30-40cm		2/m ²	
Commersonia nepenthes	C2	30-40cm		2/m ²	
Mimosa catalinae	C2	30-40cm		4/m ²	
Dioscorea sp. 'Klasse Fortuini'	C2	30-40cm		4/m ²	
Opuntia 'Las Tor'	C2	30-40cm		4/m ²	
Viburnum officinale	C2	30-40cm		4/m ²	
Albizia leopoldina 'Mistral'	C2	30-40cm		4/m ²	
Albizia rostrata	C2	30-40cm		4/m ²	
Sargassum officinale	C2	30-40cm		4/m ²	
Albizia rostrata	C2	30-40cm		4/m ²	
Albizia sylvatica 'Pupurea'	C2	30-40cm		4/m ²	
Scaevola taccada 'Varieg'	C2	30-40cm		4/m ²	
Primula japonica 'Misses's Crozier'	C2	30-40cm		4/m ²	
Heliconia sp.	C2	10-20cm		8/m ²	

Wildfire Buffer Planting Mix					
	Species	Stock	Height	Spec	Density
	<i>Rubus fruticosus</i>	C5		branched	11m2
	<i>Prunus spinosa</i>	C5		branched	11m2
	<i>Crataegus monogyna</i>	C5		bushy	8m2
	<i>Helleborus foetidus</i>	P9			29m2
	<i>Coschium autumnale</i>	P9			29m2
	<i>Hymenocallis non-scripta</i>	Bulb			100m2
	<i>Yucca roosei</i>				11m2




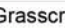



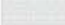
Private gardens

Wildflower Meadow Mix

Lawn

Lawn area seed with Coburn 'Low Maintenance' mix:
80% (Perennial Ryegrass) + 15% (Slender Creeping Red Fescue) +
5% (Bouteloua Bait) + Seeding rate: 25g/m² (250g/ha)
Cutting height: Between 20-40mm

HARDSCAPE:
PROPOSED HARD LANDSCAPING

	<input type="text" value="Tarmac"/>		<input type="text" value="Private parking"/>
	<input type="text" value="Paving 1"/>		<input type="text" value="Grasscrete"/>
	<input type="text" value="Paving 2"/>		<input type="text" value="Seating / Furniture"/>
	<input type="text" value="Paving 3"/>		
	<input type="text" value="Paving 4"/>		

Tree adjustments	DT / AA	11/07/22	04
Landscape plan adjustments to reflect Architectural Layout update	DT / AA	27/06/22	03
Landscape plan adjustments to reflect Architect's comments	DT / AA	23/06/22	02
Landscape plan adjustments to reflect Architect's comments	DT / AA	13/06/22	01
Revision Notes	By / Chk	Date	Rev

Status: PLANNING



Hawarden House, 163 Upper Newtownards Road, Belfast, BT4 3HZ
[REDACTED] parkhood.com

Client: Eutopia Homes

Project: Great Western Yard
Gloucester

Title: Proposed Landscape Plan

Job No: 7594	Scale@/
--------------	---------

Drawing Number							
Project	Originator	Volume	Level	Type	Role	Number	Revision
7594	PHL	SW	XX	DR	L	1000	03